

Location:

The heart of Ealing Broadway shopping centre and a variety of shops, cafes, bars and restaurants with Ealing Broadway Station (Central, District, and Elizabeth Line less than half a mile away from property offering fantastic transport links to central London.

Key points:

- 4 Double bedrooms
- Prime Ealing Broadway Location
- Huge split level apartment
- 8 Minute walk to Ealing Broadway Station
- 1,597 sqft
- 2 Bathrooms
- No onward chain
- Walking distance to Ealing Broadway shopping center
- 4 Minute walk to Walpole Park

Do Better:

Acton
sales@astonrowe.co.uk

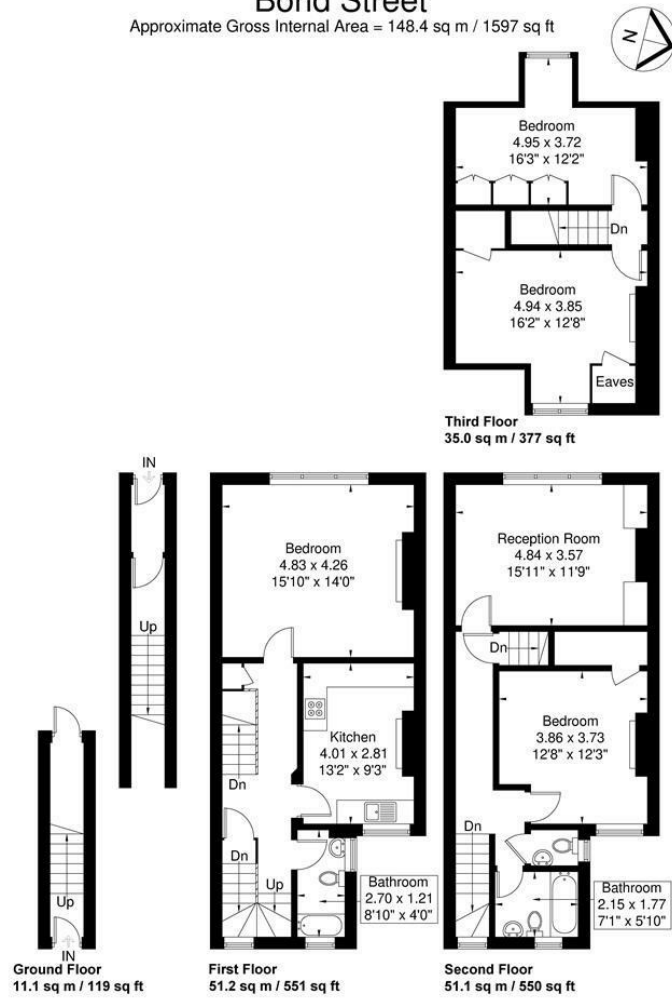
57-59 Churchfield Road,
Acton, London, W3 6AY

020 8992 3600

Aston Rowe



Bond Street
Approximate Gross Internal Area = 148.4 sq m / 1597 sq ft



Although every attempt has been made to ensure accuracy, all measurements are approximate. The floorplan is for illustrative purposes only and not to scale.
© www.perspective.co.uk

Energy Efficiency Rating		Environmental Impact (CO ₂) Rating	
Current	Potential	Current	Potential

England & Wales EU Directive 2002/91/EC

Offers In Excess Of £625,000

Bond Street, London W5 5AS

- 1 Reception Rooms
- 4 Bedrooms
- 2 Bathrooms



The current owner says:

The property is in a fantastic location for the local shops, parks, schools and transport links that Ealing has to offer.

A well presented four bedroom split-level apartment, offering generous living accommodation across approximately 1,597 sq ft and presented in good condition throughout. The property comprises a huge bright and spacious reception room, ideal for entertaining, a separate kitchen, four well proportioned bedrooms and two bathrooms, arranged over four floors to create a versatile and practical layout. Set within the heart of Ealing above an attractive parade of shops, this property would make an ideal purchase for a downsizer, buy-to-let investor, or family looking to trade up, with further potential to split the property into multiple apartments, subject to the necessary planning consents and freeholder's consent.

Bond Street is perfectly located in the heart of Ealing Broadway, opposite Ealing Green, the elegant Pitshanger Gallery and Walpole Park. The heart of Ealing Broadway shopping centre and a variety of shops, cafes, bars and restaurants with Ealing Broadway Station (Central, District, and Elizabeth Line) less than half a mile away from property offering fantastic transport links to central London.

Further benefits include a long lease and no onward chain.

What's better:

A four bedroom split level flat set over 1,597 sqft in the heart of Ealing.

