



## Lower Richmond Road, SW15

£3,500 Per calendar month

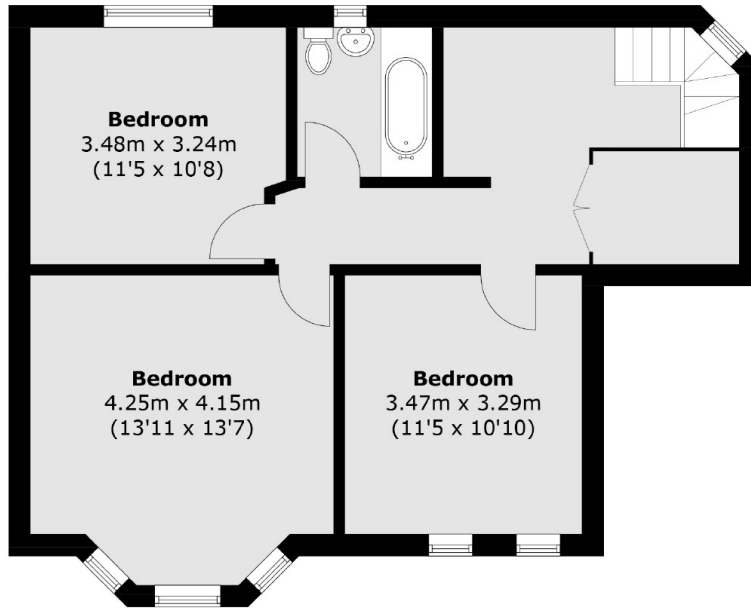
This spacious and well appointed two storey, three bedroom maisonette garden flat situated in a desirable location. The property further benefits from eat in kitchen two bathrooms and a private rear garden.

Lower Richmond road is a highly sought-after location, moments from independent shops and bars, offering excellent transport links. This stunning property is situated close to the River Thames.

### Features

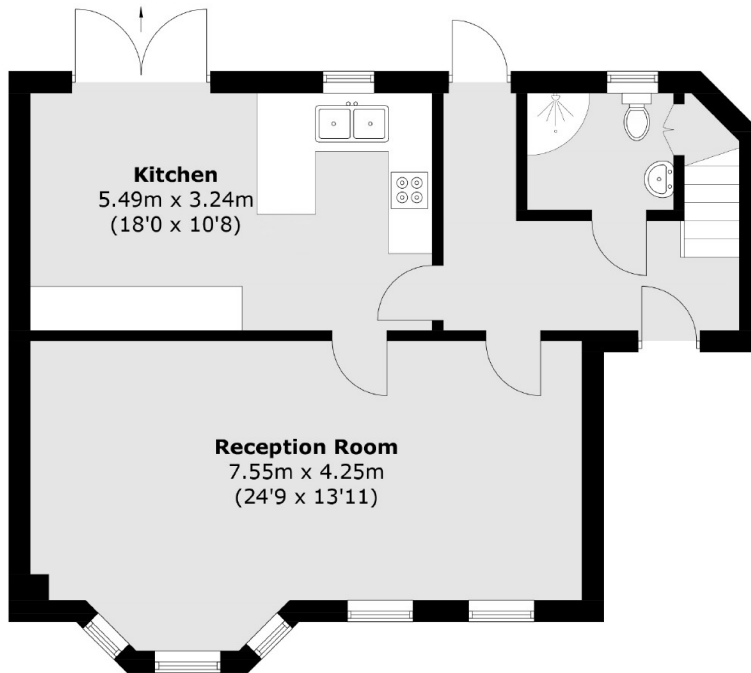
- Split Level Maisonette
- Spacious Reception
- Three Double Bedroom
- Eat In Kitchen
- Tiled Bathroom Suite
- Private Rear Garden

# Lower Richmond Road, London, SW15



To  
Garden

## First Floor



## Ground Floor

Total area (approx.): 121.9 sq. m (1,312.1 sq. ft)