



Oakfield Road, N14

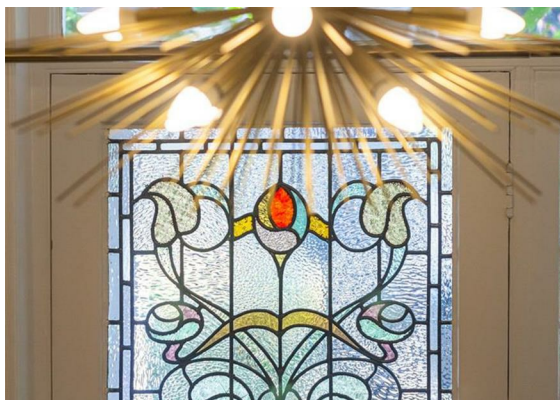
£1,150,000

**Havilands**

the advantage of experience



- Beautifully Presented Five Bedroom, Two Bathroom Period Property offering almost 2000 sq ft of Living Space
- Period Features throughout including Original Front Door with Stained Glass Window, High Ceilings with Cornicing and Fireplaces
- 96ft Mature Garden with Rear Access
- Located Close to Picturesque Southgate Green Conservation Area, Local Shops and Amenities along Southgate High Street and Green Lanes and Green Spaces including Grovelands Park
- Conveniently Located for Southgate Underground (Piccadilly Line) and Palmers Green National Rail, Plus Ease of Access to North Circular Road A406
- In Catchment of Walker Primary School, St Monica's Catholic Primary School and Ashmole Academy





Havilands



Havilands



Havilands



Havilands

Havilands are delighted to offer For Sale, this beautifully presented, spacious FIVE BEDROOM PERIOD PROPERTY on Oakfield Road, N14. Located in a highly sought after location the property offers almost 2000sqft of living space across three floors, and boasts a wealth of original features including original front door with stained glass window, high ceilings with cornicing and fireplaces.

It is comprised of:

Ground Floor: Entrance hall, two reception rooms, an open plan kitchen/diner, and a downstairs w/c.

First Floor: Four bedrooms, (three of which feature bay windows), and a full-size bathroom, Second Floor: a spacious fifth bedroom, featuring an en-suite shower room with ample eaves storage.

The property also benefits from an exceptionally large (approx. 96ft) mature rear garden with a seating area, and has potential to extend to the rear (STPP).

Ideally located close to picturesque Southgate Green conservation area, local shops and amenities along Southgate high street and Green Lanes and green spaces including Grovelands park.

Conveniently located for Southgate Underground (Piccadilly Line), offering direct rail links into central London (Kings Cross approx. 25 mins) and Palmers Green (Moorgate approx. 25 mins). Plus ease of access to North Circular Road A406. Additionally, this ideal family home falls within the catchment area of sought after local schools including Walker Primary, St Monica's Catholic Primary and Ashmole Academy.

Viewing is highly recommended - to arrange yours, please do not hesitate to get in touch.

Property Information:

Tenure: Freehold

Local Authority: Enfield

Council Tax: Band F (2026/27 £3,275.52)

EPC Rating: Current 66D Potential 78C

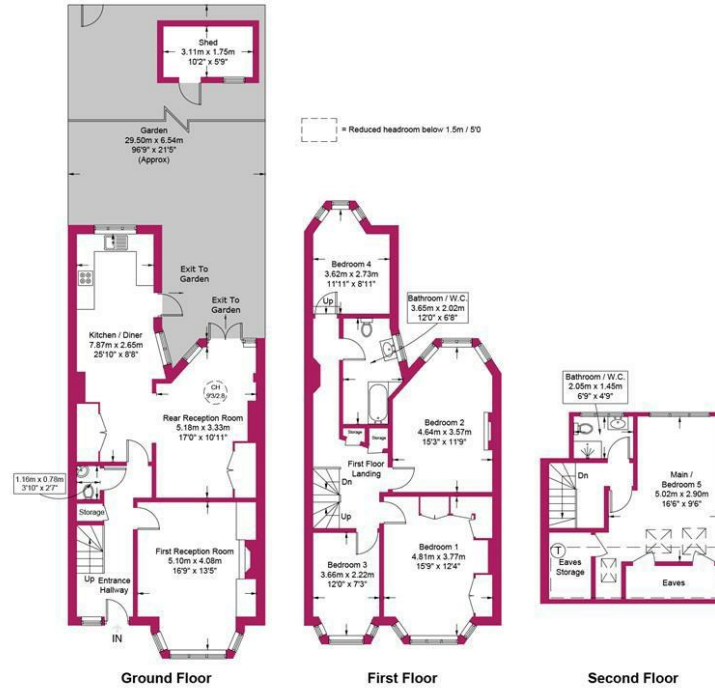
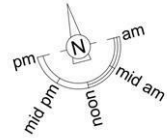
For more images of this property please visit [havilands.co.uk](https://havilands.co.uk)

# Oakfield Road, N14

Approximate Gross Internal Area = 1959 sq ft / 182.0 sq m  
(Including Restricted Height / Eaves Storage)

Restricted Height = 115 sq ft / 10.7 sq m

Shed = 58 sq ft / 5.4 sq m



## Energy Efficiency Rating

	Current	Potential
Very energy efficient - lower running costs		
(92 plus) <b>A</b>		
(81-91) <b>B</b>		
(69-80) <b>C</b>		<b>78</b>
(55-68) <b>D</b>	<b>66</b>	
(39-54) <b>E</b>		
(21-38) <b>F</b>		
(1-20) <b>G</b>		
Not energy efficient - higher running costs		
<b>England &amp; Wales</b>	EU Directive 2002/91/EC	

**Havilands**

This plan is for layout guidance only and is not drawn to scale unless stated. All dimensions, including windows, doors, and the Total Gross Internal Area (GIA), are approximate. For precise measurements, please consult a qualified architect or surveyor before making any decisions based on this plan.



havilands | 020 8886 6262

come by and meet the team

30 The Green, Winchmore Hill, London, N21 1AY

**Havilands**

the advantage of experience