



78 White Friars Lane, St. Judes, Plymouth, Devon, PL4 9RB



# Offers Over £220,000

Offered for sale with no onward chain, this well-presented three-bedroom terraced home enjoys a convenient position in the popular St Judes area of Plymouth, providing easy access to the city centre, local amenities and nearby green spaces. Ideally suited to first-time buyers, growing families or investors, the property combines practical living accommodation with a sunny south-facing garden and the added benefit of a garage.

Stepping inside, the ground floor offers a bright and welcoming reception room overlooking the rear garden. With direct access outside, this versatile living space creates a seamless connection between indoor and outdoor living, making it ideal for both relaxing and entertaining. The modern fitted kitchen is thoughtfully arranged and provides a practical space for everyday cooking and dining.

Upstairs, there are three well-proportioned bedrooms, offering flexible accommodation for families, guests or those working from home. A family bathroom serves the first floor, while gas central heating and double glazing throughout provide comfort and efficiency year-round.

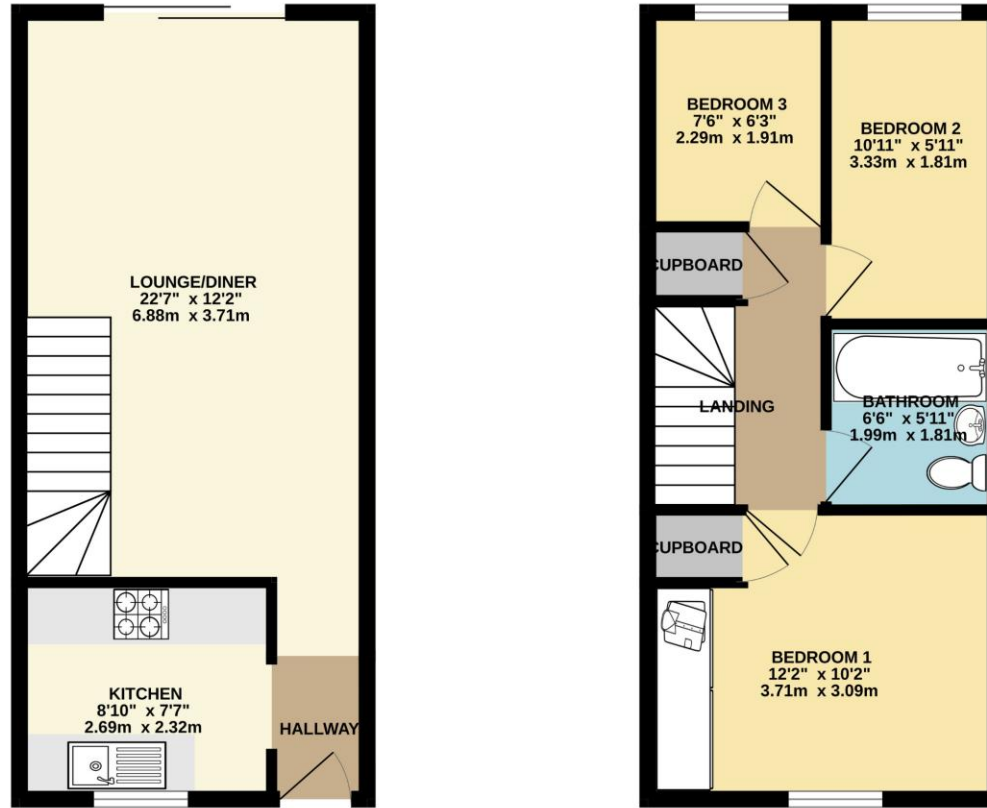
Outside, the south-facing rear garden enjoys an abundance of natural sunlight throughout the day, creating an inviting space for outdoor dining, children's play or simply unwinding in the warmer months. A single garage adds valuable storage space and off-road parking potential.

The location is particularly appealing, with Plymouth city centre within easy reach and a variety of shops, cafés and everyday services available nearby. Residents can also enjoy access to local green spaces, including Freedom Fields Park and Beaumont Park, both offering pleasant walks, recreational facilities and open areas for dog walking and outdoor leisure.

To view this property call Lang Town & Country Estate Agents on **01752 256000**







TOTAL FLOOR AREA : 672 sq.ft. (62.4 sq.m.) approx.

Whilst every attempt has been made to ensure the accuracy of the floorplan contained here, measurements of doors, windows, rooms and any other items are approximate and no responsibility is taken for any error, omission or mis-statement. This plan is for illustrative purposes only and should be used as such by any prospective purchaser. The services, systems and appliances shown have not been tested and no guarantee as to their operability or efficiency can be given.  
Made with Metropix ©2026



Lang Town & Country  
6 Mannamead Road  
Plymouth  
PL4 7AA

Tel: 01752 256000

Email: [property@langtownandcountry.com](mailto:property@langtownandcountry.com)

[www.langtownandcountry.com](http://www.langtownandcountry.com)

Lang Town & Country endeavour to ensure the accuracy of property details produced and displayed, we have not tested any apparatus, equipment, fixtures, fittings or services and so cannot verify that they are connected, in working order or fit for purpose. A buyer must check the availability of any property and make an appointment to view before embarking on any journey to see a property.

