



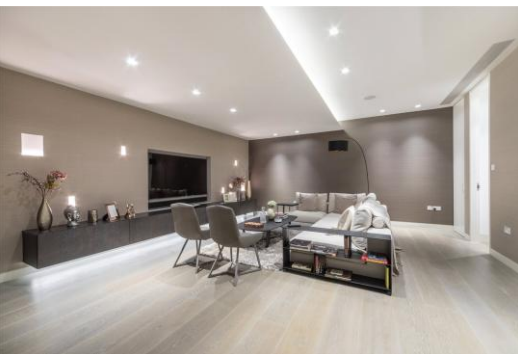
# Nutley Terrace

Hampstead, NW3

£16,900 per month  
(£3,900 per week)

A magnificent new build contemporary style 3 bedroom house over 4 floors boasting a private roof terrace, lift, off street parking, integral garage, Control 4 system, air conditioning, under floor heating and Lutron lighting, engineered wood floors throughout. The property is situated in this excellent location in Hampstead walking distance to the amenities of Hampstead Village. Accommodation comprises lower ground: double bedroom with fitted wardrobes and en-suite wet room, cinema room, gymnasium, utility room, wet room ground: plant room, garage 1st floor: master bedroom with en-suite dressing room and wet room, further double bedroom with fitted wardrobes and en-suite wet room 2nd floor: spectacular reception room and dining area, open plan fully fitted eat in kitchen, guest cloakroom 3rd floor: roof terrace.

**CHESTERTONS**



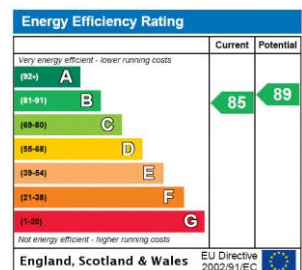
# Nutley Terrace

## Hampstead, NW3

- A New Build Contemporary Style Semi Detached House Over 4 Floors
- 3 Bedrooms, 4 Bathrooms, 2 Receptions, Open Plan Fully Fitted Eat In Kitchen
- Roof Terrace, Lift, Parking, Integral Garage, Air Conditioning, Under Floor Heating, Lutron Lighting
- Excellent Location in Hampstead, Walking Distance to Hampstead Village (Northern Line)



**Minimum Term:** 18 months  
**Deposit Required:** £23,400.00  
**Local Authority:** London Borough Of Camden  
**Council Tax Band:** H  
**EPC Rating:** B  
**Furnished**



### Chestertons Hampstead Lettings

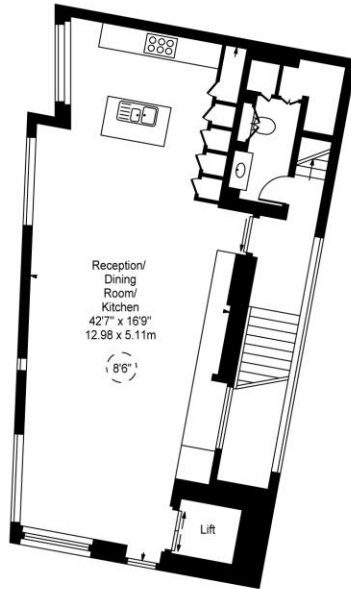
55-56 Hampstead High Street  
 Hampstead  
 London  
 NW3 1QH  
[hampsteadlettingsusers@chestertons.co.uk](mailto:hampsteadlettingsusers@chestertons.co.uk)  
 02077941125  
[chestertons.co.uk](http://chestertons.co.uk)

Additional tenant charges apply (fees apply to non-AST tenancies only)  
 Tenancy Agreement Fee: £300  
 References per Tenant/Guarantor: £60  
 Inventory check (approx. £100 – £250 inc. VAT)  
[chestertons.co.uk/property-to-rent/applicable-fees](http://chestertons.co.uk/property-to-rent/applicable-fees)

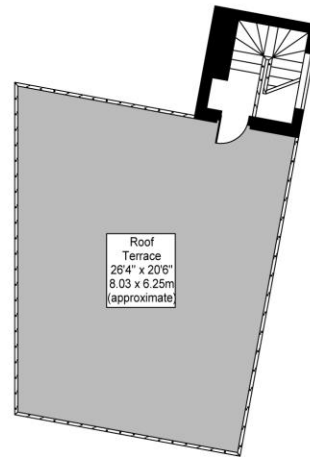
Nutley Terrace,  
Hampstead, NW3



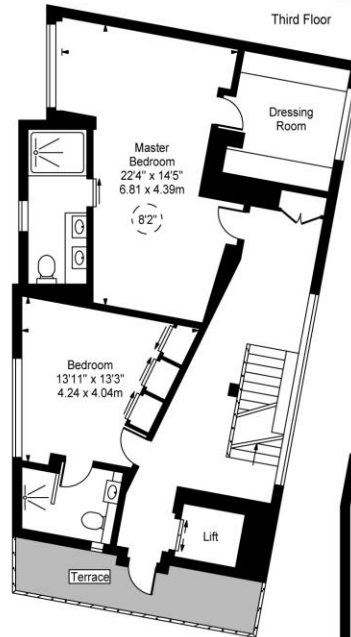
○ - Ceiling Height



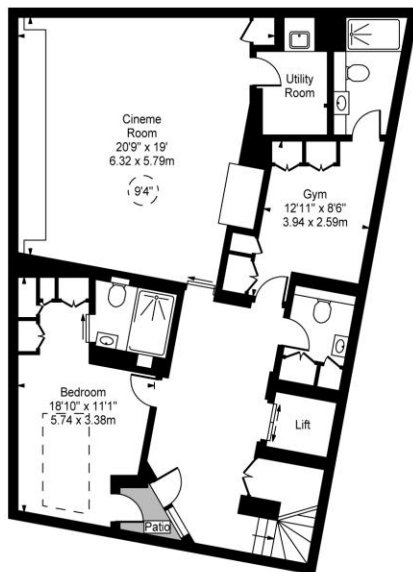
Second Floor



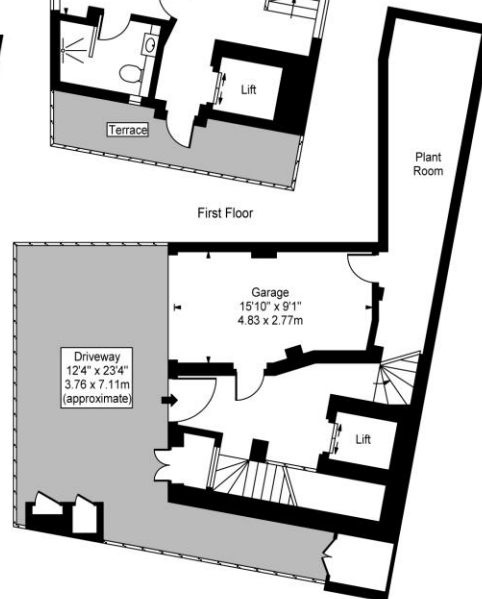
Third Floor



First Floor



Basement



Ground Floor

Approx Gross Internal Area 3480 Sq Ft - 323.29 Sq M  
(Including Garage & Plant Room)

For Illustration Purposes Only - Not To Scale  
www.goldlens.co.uk  
Prepared for Chestertons  
Ref. No. 009359K

Chesterton UK Services Limited trading as Chestertons for themselves and for the vendor of this property whose agents they are, give notice that (i) these particulars do not constitute any part of an offer or contract, (ii) all statements contained within these particulars are made without responsibility on the part of Chestertons or the vendor, (iii) whilst made in good faith, none of the statements contained within these particulars are to be relied upon as a statement or representation of fact, (iv) any intending purchasers must satisfy themselves by inspection or otherwise as to the correctness of each of the statements contained within these particulars, (v) the vendor does not make or give either Chestertons or any person in their employment any authority to make or give representation or warranty whatsoever in relation to this property. Wide angle lenses may be used. ©Copyright Chestertons | Chesterton Global Ltd | Registered Office 5th Floor, The Lantern, 75 Hampstead Road, London, NW1 2PL Registered Company Number 05334580.



This paper is  
100% recyclable