



Woodland Gardens

Isleworth, TW7

£750,000

Situated in the ever popular Woodlands area of Isleworth, this beautifully presented three double bedroom family home is ideally located for access to Isleworth train station, a range of excellent local schools and the shops, cafes and bars of Isleworth Village. The ground floor has been extended and offers a welcoming hallway, a spacious front reception room, a large modern kitchen/diner and a good sized rear reception room with bi-fold doors leading out to the rear garden. The first floor offers a larger than average principle bedroom with built in wardrobes, a second double bedroom with built in wardrobes, a third double bedroom and a well presented family bathroom. Externally the property offers driveway parking for multiple cars and a large rear garden with side access. Further benefits include gas central heating, double glazing and access to loft space. There is potential to extend into the loft subject to the relevant planning consent.



- Three Double Bedrooms
- Well Presented Throughout
- Driveway Parking
- Sought After Location
- Potential to Extend (STPP)
- Large Rear Garden

SCAN HERE
FOR
PROPERTY
DETAILS



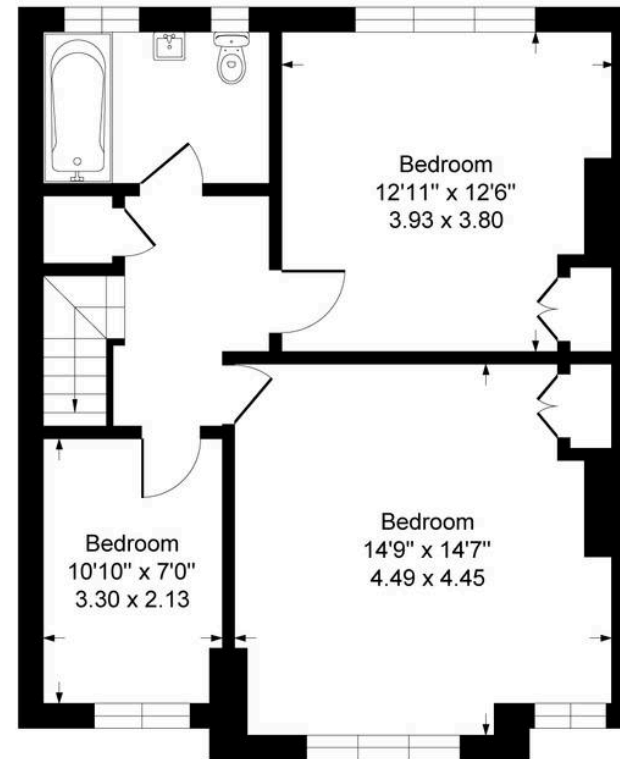
OAKHILL

Woodland Gardens, Isleworth, TW7

Approximate Gross Internal Area
Main House 1242 sq ft - 115 sq m



Ground Floor



First Floor

This floorplan is for guidance only and does not form part of an offer or contract.
Buyers or tenants should verify all details through inspection, searches, and surveys.
Measurements are approximate and should not be relied upon for valuation or transactions.
www.evolveLondon.co.uk