



 3

 2

 1

 D

DavidJames
the estate agent

Greys Road, Woodthorpe, Nottingham, NG5 4GU

£1,350 Per Calendar Month



About This Property

A well-presented traditional style semi-detached house located in the desirable Woodthorpe area. Boasting three bedrooms (including two spacious double bedrooms), this property offers a comfortable and versatile living space. The charming entrance hall welcomes you with wooden finish flooring and convenient under-stair storage. The living room features a bow window, wooden flooring, and an electric fireplace, while a large, versatile reception room with a patio door opens to the generous rear garden, adding to the overall appeal. The spacious dining kitchen offers ample units, a pantry, and essential appliances including a brand new range cooker. A modern bathroom with a white suite and mains shower enhances the practicality of this family home. Additional features include a front garden, a sizable rear garden, a garage and driveway, ensuring off-street parking.

TENANCY DETAILS

Available From: 10th July 2026

Furnishing: Unfurnished

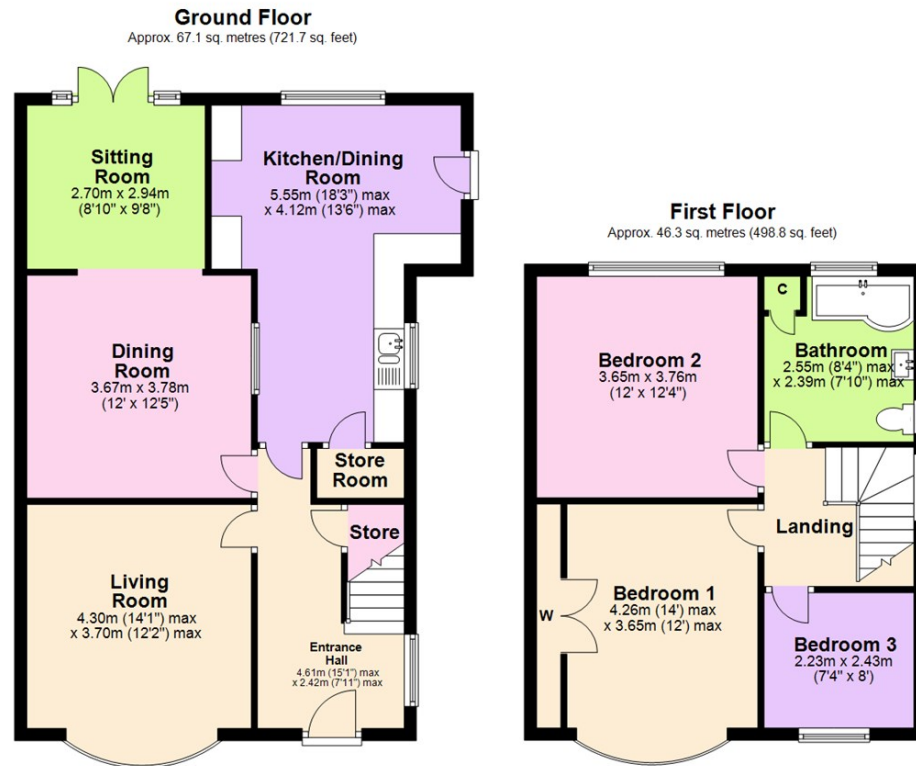
EPC Rating: D

Council Band: C

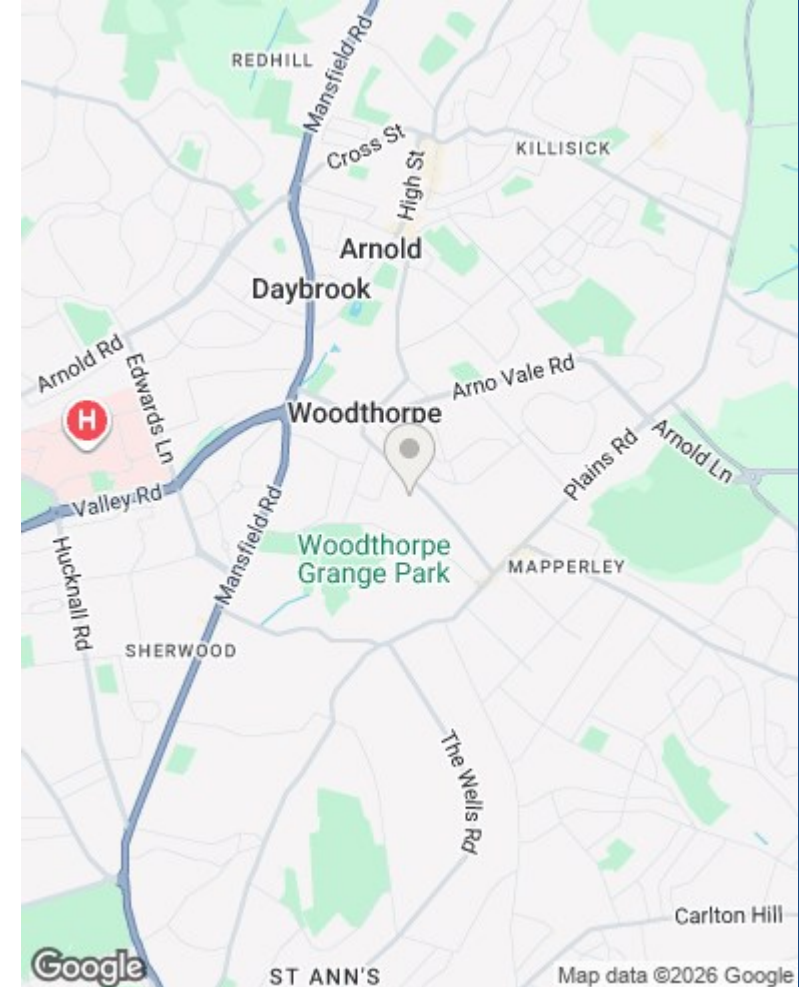
- Well presented traditional style semi-detached house
- Three bedrooms (including two double bedrooms)
- Charming entrance hall with wooden finish flooring & useful under-stair storage
- Living room with bow window, wooden flooring & feature fireplace
- Large versatile reception room with patio door to the rear garden
- Spacious dining kitchen with ample units, pantry & appliances including a brand new range cooker
- Modern bathroom with white suite and mains shower
- UPVC double glazing & gas centra heating
- Front garden & generous rear garden with paved patio area & shed
- Garage & driveway provides off-street parking







Total area: approx. 113.4 sq. metres (1220.6 sq. feet)



These particulars are produced in good faith, are set out as a general guide only and do not constitute any part of a contract. No person in the employment of David James Estate Agents Ltd has any authority to make any representation whatsoever in relation to the property. All services, together with electrical fittings or fitted appliances have NOT been tested. All the measurements given in the details are approximate. Floor plans are for illustrative purposes only and are not drawn to scale. The position and size of doors, windows, appliances and other features are approximate only. The photographs of this property have been taken with a 10mm wide-angle lens. No responsibility can be accepted for any loss or expense incurred in viewing. If you have a property to sell you may wish to take advantage of our free valuation service. David James Estate Agents have established professional relationships with third-party suppliers for the provision of services to Clients. As remuneration for this professional relationship, the agent receives referral commission from the third-party company. David James Estate Agents receives the following commission from each third party supplier on a per referral basis: W A Barnes Ltd: £60 including VAT. All Moves UK Ltd: 18% including VAT of the invoice total (£107 including VAT average). MoveWithUs Limited: £188 including VAT (average).

Council Tax Band: C
Gedling Borough Council

DavidJames
the estate agent

David James Estate Agents
45b Plains Road, Mapperley, Nottingham, NG3 5JU
t: 0115 962 4213 e: lettings@david-james.com

