



ST. GEORGE WHARF, SW8

£3,900 pcm

Set within the iconic St George Wharf development, this exceptional west two bedroom, two and half bathroom has two private balconies that provide breathtaking views of the River Thames, an open-plan kitchen equipped with high-end integrated appliances, built-in wardrobes and additional utility space for convenience. Residents of St George Wharf enjoy

- Seventh Floor Apartment
- Two Spacious Bedrooms
- Spacious Separate Reception
- 24-Hour Concierge
- Balcony With River Views
- Ample Storage

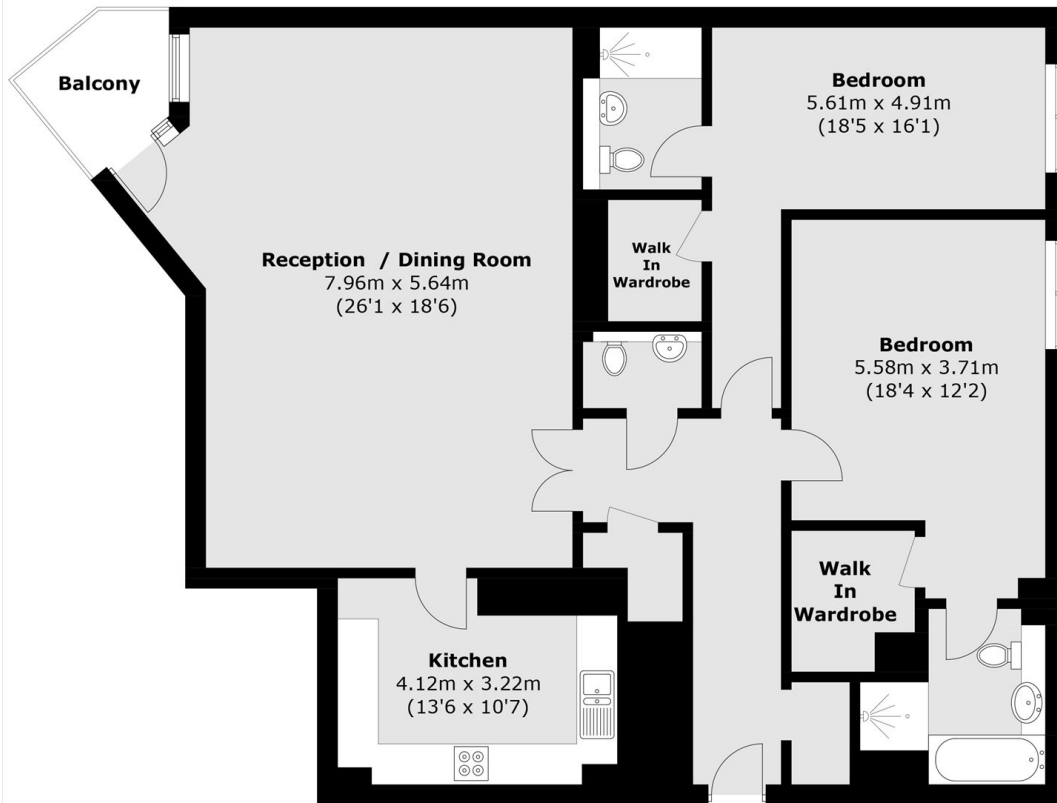


ABOUT THE HOME

This vibrant riverside development is home to a variety of conveniences, such as a riverside bistro, Tesco Express, medical centre, and pharmacy, all just steps from your door. With unparalleled transport links at Vauxhall station offering Rail, Bus, and Underground services.







Total area (approx.): 133.8 sq. m (1,440.2 sq. ft)
Balcony area (approx.): 3.6 sq. m (38.7 sq. ft)

LiFE RESIDENTIAL

11 Flagstaff House, London,
SW8 2LZ

Sales: 020 7476 1408

Lettings: 020 7582 7989

Energy Rating: C. We aim to make our particulars both accurate and reliable. However they are not guaranteed; nor do they form part of an offer or contract. If you require clarification on any points then please contact us, especially if you're traveling some distance to view. Please note that appliances and heating systems have not been tested and therefore no warranties can be given as to their good working order.