



5 Yew Tree Gardens, South Marston

Swindon

£380,000

mcfarlane
property.com



5 Yew Tree Gardens

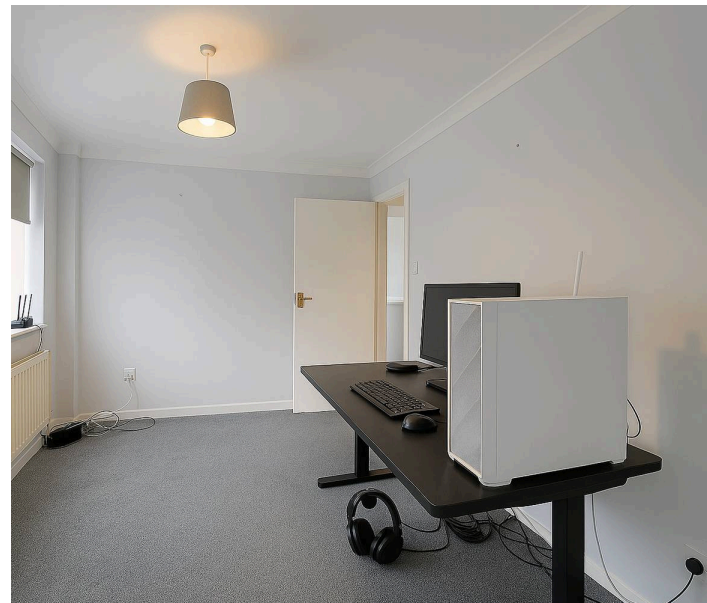
South Marston, Swindon

A well-presented detached three-bedroom home tucked away in a quiet cul-de-sac location. The property offers a spacious living room, separate dining room with access through to the living room, a fitted kitchen and a convenient downstairs WC.

Upstairs provides three well-proportioned bedrooms and a family bathroom.

Externally, the home benefits from a private rear garden which is accessed via the living room, along with a generous front garden. There is driveway parking and a detached garage. The rear garden also enjoys direct gated access to the neighbouring playing fields/recreation ground, offering an excellent feature for families and those who enjoy outdoor space.

- Quiet cul-de-sac location
- Detached three-bedroom house
- Fitted kitchen & downstairs WC
- Private rear garden
- Driveway providing off-road parking





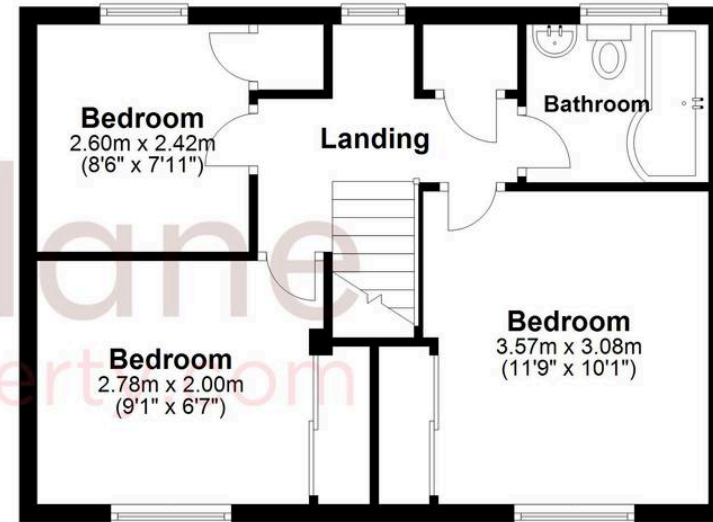
Ground Floor

Approx. 47.3 sq. metres (508.9 sq. feet)



First Floor

Approx. 42.0 sq. metres (451.7 sq. feet)



Total area: approx. 89.2 sq. metres (960.5 sq. feet)

McFarlane Sales & Lettings

North Swindon, Redhouse Village Centre, Swindon - SN25 2FW

01793 296600 • swindon@mcfarlaneproperty.com • www.mcfarlaneproperty.com/