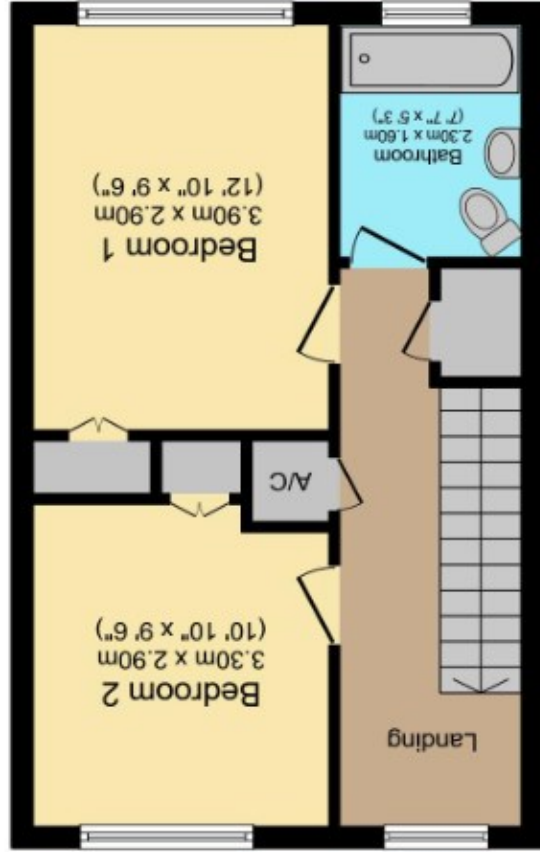


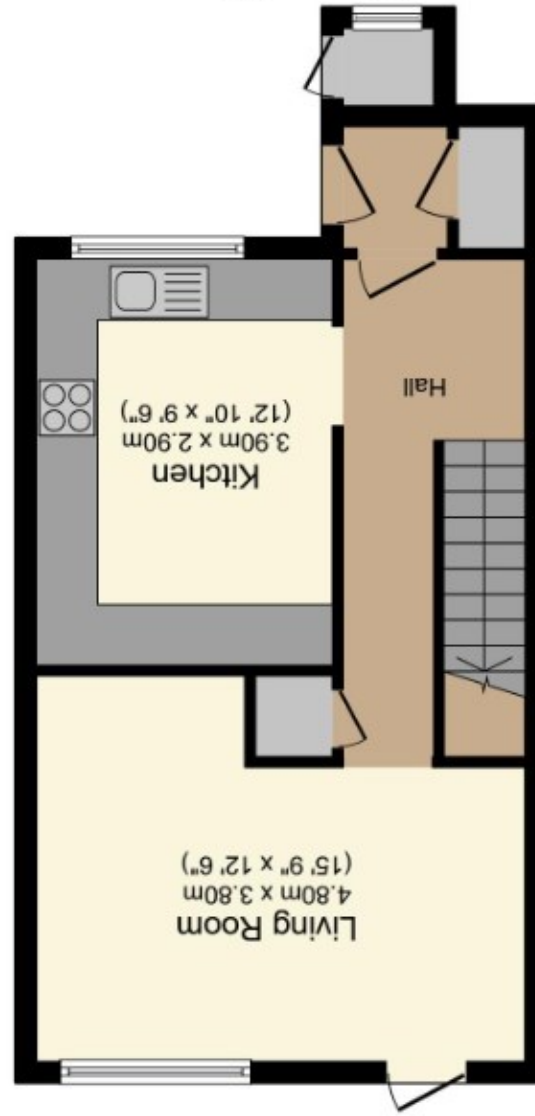
This floor plan is for illustrative purposes only. It is not drawn to scale. Any measurements, floor areas (including any total floor area), openings and orientation are approximate. No details are guaranteed, they cannot be relied upon for any purpose and they do not form part of any agreement. No liability is taken for any error, omission or misstatement. A party must rely upon its own inspection(s). Plan produced for Purple Bricks. Powered by www.focalagent.com

Total floor area 79.0 sq.m. (851 sq.ft.) approx

First Floor



Ground Floor



7 Bonington Close, Christchurch, BH23 3BG

£299,950

Mitchells
1963 — TODAY

**** No Chain **** A spacious mid-terraced house featuring superb accommodation totalling approximately 850 sq ft and boasting its own private rear garden.

This lovely home is tucked away in a cul de sac and situated within easy reach of shops, bus routes, local infant and junior schools and within walking distance from the historic centre of Christchurch and Avon Beach.

- Mid terraced freehold house of approximately 850 sq ft.
- Two first floor double bedrooms
- Refitted bathroom with quality tiling and fittings
- Modern, spacious kitchen/diner
- Separate lounge overlooking the garden
- Large level rear garden with new garden shed
- Entrance hallway with lots of storage cupboards
- Gas central heating and uPVC double glazed windows

EPC Rating Band: C
Council Tax Band: B
Freehold

Successful buyers will be required to complete online identity checks provided by Lifetime Legal. The cost of these checks is £45 inc. VAT per purchase which is paid in advance, directly to Lifetime Legal. This check verifies your identity in line with our obligations as stipulated by our regulatory body, HMRC

