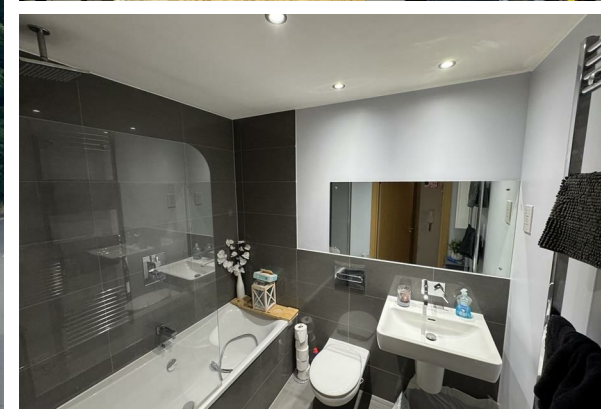




TO LET

679 Cherrydown East, Basildon, SS16 5GS

£1,495



Brown & Brand

- Modern apartment located in the desirable area of Cherrydown East
- Two spacious bedrooms
- Easy access to local shops, schools, and transport links
- Secure parking
- AVAILABLE JANUARY 2026
- Spacious open plan lounge / kitchen
- Two well-designed bathrooms
- 2 Allocated Parking spaces
- Security Entrance phone system



Directions

THE PROPERTY

Welcome to this modern apartment located in the desirable area of Cherrydown East, Basildon. This well-appointed property boasts a generous living space, making it an ideal choice for individuals or small families seeking comfort and convenience.

The apartment features a bright and inviting reception room, perfect for relaxing or entertaining guests. With two spacious bedrooms, there is ample room for rest and privacy. The property also includes two well-designed bathrooms, ensuring that morning routines are both efficient and comfortable.

This apartment benefits from contemporary design and modern amenities, providing a stylish living environment. The location in Cherrydown East offers easy access to local shops, schools, and transport links, making it a practical choice for those commuting.

The apartment benefits from TWO ALLOCATED PARKING SPACES.
EPC Rating C

SITUATION