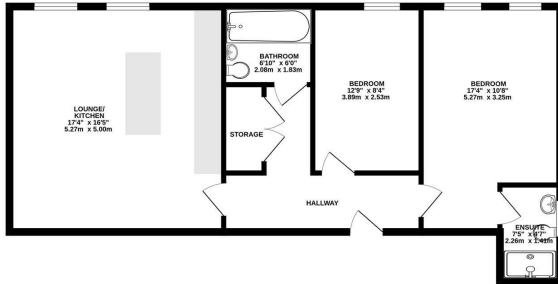




Keith  
Ashton

Kings Road,  
Brentwood

FIRST FLOOR  
748 sq.ft. (69.5 sq.m.) approx.



TOTAL FLOOR AREA: 748 sq.ft. (69.5 sq.m.) approx.  
Measurements are approximate. See to site. Excludes parking area.  
Made with Metreplan (2022)



2 Station Place | 14-118 Kings Road, Brentwood, CM14 4EA

We are delighted to bring to market this well-presented first floor apartment, ideally situated just a stone's throw from Brentwood Station, offering excellent transport links into London and beyond.

This modern home features a spacious open-plan lounge/kitchen, fitted with sleek cabinetry and ample worktop space. There are two double bedrooms, with the principal bedroom benefitting from a contemporary ensuite shower room. A stylish family bathroom and built-in storage complete the accommodation.

Located within walking distance of the High Street, with its array of shops, bars and restaurants, this attractive apartment offers an excellent blend of comfort, convenience and connectivity.

£315,000

Energy Efficiency Rating		Environmental Impact (CO <sub>2</sub> ) Rating	
Very energy efficient - lower running costs	Current	Target	Presented
(82 plus) A	85	85	
(61-81) B			
(39-60) C			
(19-38) D			
(9-18) E			
(1-8) F			
(1-8) G			

England & Wales EU Directive 2002/91/EC

**SERVICES:**

Local Authority: Brentwood  
Council tax band: E  
Post code: CM14 4EA

**VIEWING:**

Strictly by prior arrangement with Keith Ashton Estate Agents

**OPENING HOURS:**

Monday to Friday: 8.45AM - 6.30PM | Saturdays: 9AM - 5.30PM | Sundays: 10AM - 2PM

**MORTGAGE INFORMATION:** We offer the additional facility of an in-house Independent Financial Adviser who will access all mortgage lenders with the purpose of providing you with the benefit of choice. For quotations or comparables please call 01277 260858 or visit our interactive website at [www.mortgagebusiness.net](http://www.mortgagebusiness.net)



We the Agent have not tested any apparatus, fittings or services for this property. The plot size is intended merely as a guide and has not been officially measured or verified by the Agent. Photographs are for illustration only and may depict items which are not for sale or included in the sale of the property. As part of the service we offer we may recommend ancillary services to you which we believe may help you with your property transaction. We wish to make you aware, that should you decide to use these services we will receive a referral fee. For full and detailed information please visit 'terms and conditions' on our website [www.keithashton.co.uk](http://www.keithashton.co.uk)

Brentwood  
Tel. 01277 260858

Village Office  
Tel. 01277 375757

Lettings Office  
Tel. 01277 202200

Explore more @ [www.keithashton.co.uk](http://www.keithashton.co.uk)  