

for sale

£350,000 Freehold

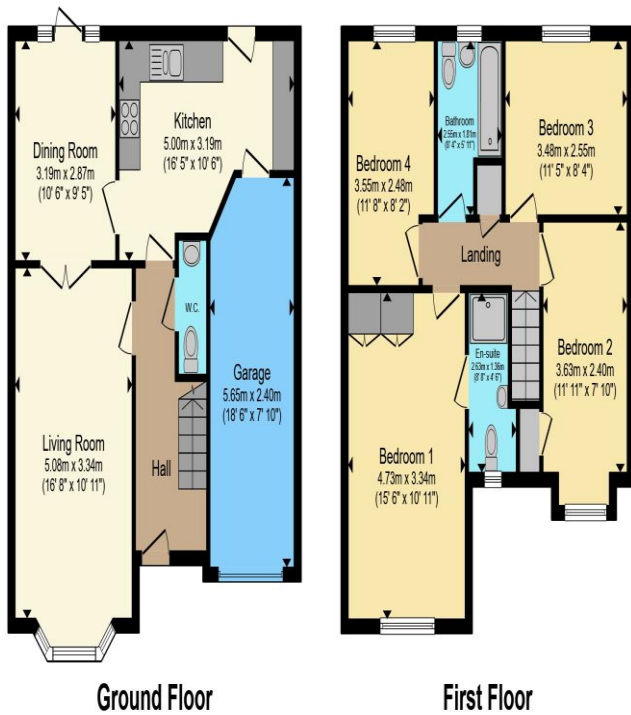


Cony Walk Grange Park Northampton NN4 5DJ

- Energy Rating: Awaited
- FOUR BEDROOM DETACHED HOME
- GARAGE AND DRIVEWAY
- LOUNGE AND SEPARATE DINING ROOM
- ENSUITE TO MASTER BEDROOM



Property Details



Total floor area 121.1 m² (1,304 sq.ft.) approx

This floor plan is for illustrative purposes only. It is not drawn to scale. Any measurements, floor areas (including any total floor area), openings and orientation are approximate. No details are guaranteed, they cannot be relied upon for any purpose and they do not form part of any agreement. No liability is taken for any error, omission or misstatement. A party must rely upon its own inspection(s). Powered by www.propertybox.io



To view this property please contact Connells on

T 01604 706644
E woottonfields@connells.co.uk

11 Tudor Court Wootton Hope Drive Wootton
NORTHAMPTON NN4 6FF

Property Ref: WFL408332 - 0002

Tenure:Freehold EPC Rating: Awaited

Council Tax Band: E

1. MONEY LAUNDERING REGULATIONS Intending purchasers will be asked to produce identification documentation at a later stage and we would ask for your co-operation in order that there will be no delay in agreeing the sale. 2. These particulars do not constitute part or all of an offer or contract. 3. The measurements indicated are supplied for guidance only and as such must be considered incorrect. Potential buyers are advised to check measurements before committing to any expense. 4. We have not tested any apparatus, equipment, fixtures, fittings or services and it is in the buyers interest to check the working condition of any appliances.

Connells Residential is registered in England and Wales under company number 1489613, Registered Office is Cumbria House, 16-20 Hockliffe Street, Leighton Buzzard, Bedfordshire, LU7 1GN. VAT Registration Number is 500 2481 05.

see all our properties at www.connells.co.uk | www.rightmove.co.uk | www.zoopla.co.uk