



## 41 Kings Wharf Mill Street, Wantage, OX12 9NZ

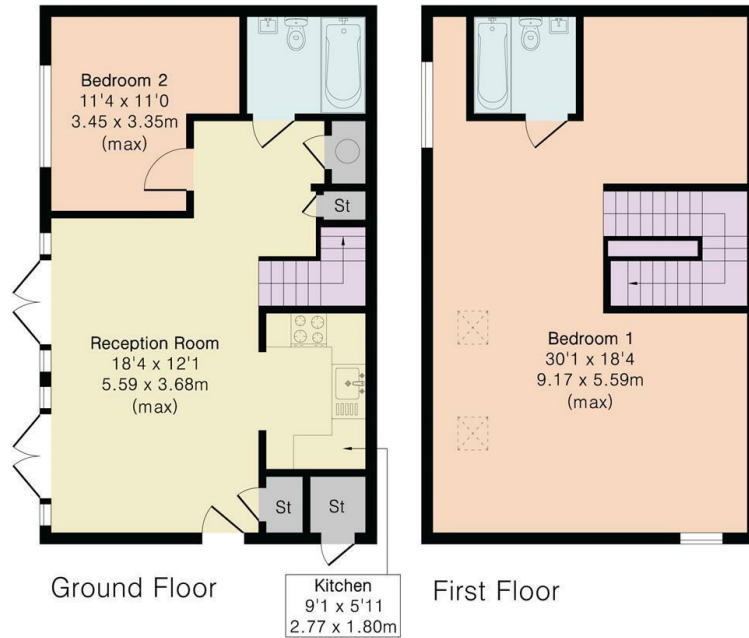
£1,350 Per Month - 1st September 2026.

- Two Bedrooms
- Central Wantage location
- Available late August
- Ensuite to master bedroom
- Allocated undercover parking
- Council Tax Band C
- Offered unfurnished

**Approximate Gross Internal Area 1084 sq ft - 100 sq m**

Ground Floor Area 542 sq ft – 50 sq m

First Floor Area 542 sq ft – 50 sq m



## Directions

## Viewings

Viewings by arrangement only. Call 01235 773999 to make an appointment.

## Council Tax Band

C

## EPC Rating:

C

Energy Efficiency Rating		Current	Potential
<i>Very energy efficient - lower running costs</i>			
(92 plus)	A		
(81-91)	B		
(69-80)	C	77	81
(55-68)	D		
(39-54)	E		
(21-38)	F		
(1-20)	G		
<i>Not energy efficient - higher running costs</i>			
<b>England &amp; Wales</b>		EU Directive 2002/91/EC	