



The Pinfold, Hill Ridware, WS15

£325,000

3 2 2



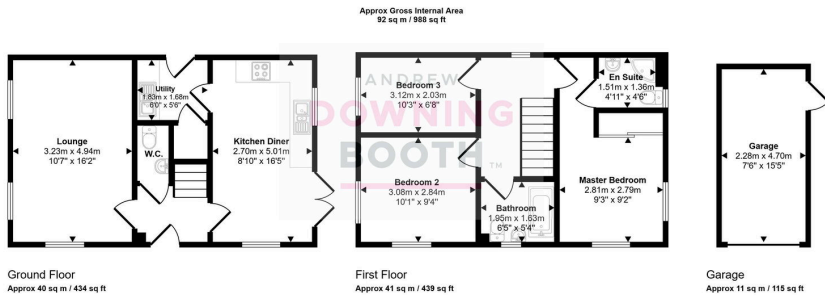
Welcome to The Pinfold, Hill Ridware – a charming family home set in a peaceful village location, offering spacious and versatile accommodation throughout.

This property is situated in the desirable village of Hill Ridware, offering a peaceful rural setting while remaining well-connected to local amenities. The village benefits from excellent schools, shops, and recreational facilities, with nearby countryside providing scenic walking and leisure opportunities. Good road links ensure easy access to Rugeley town centre, Lichfield, and the wider Staffordshire area, making this an ideal location for families and professionals seeking a balance of village charm and convenience.

The accommodation is arranged over two floors and comprises a welcoming entrance hall, a spacious living room, a kitchen/diner, utility room, and guest WC. To the first floor, the master bedroom benefits from an ensuite shower room, complemented by two further bedrooms and a contemporary family bathroom.

A beautifully presented family home in the desirable village of Hill Ridware – early viewing is highly recommended to fully appreciate the accommodation on offer.





This floorplan is only for illustrative purposes and is not to scale. Measurements of rooms, doors, windows, and any items are approximate and no responsibility is taken for any error, omission or mis-statement. Items of items such as bathroom suites are representations only and may not look like the real items. Made with Snappy 360.

- Three Bedroom Detached Home
- Convenient Location Close To Local Shops & Amenities
- Off-Street Parking & Garage
- Master Bedroom With Ensuite Shower Room
- Utility Room & Guest WC
- Contemporary Kitchen/Diner
- EPC Rating: B
- Council Tax Band: D



Energy Efficiency Rating		
	Current	Potential
Very energy efficient - lower running costs		
(92 plus) A		95
(81-91) B	83	
(69-80) C		
(55-68) D		
(39-54) E		
(21-38) F		
(1-20) G		
Not energy efficient - higher running costs		
England & Wales	EU Directive 2002/91/EC	