



MILE



MILE



MILE



MILE



MILE

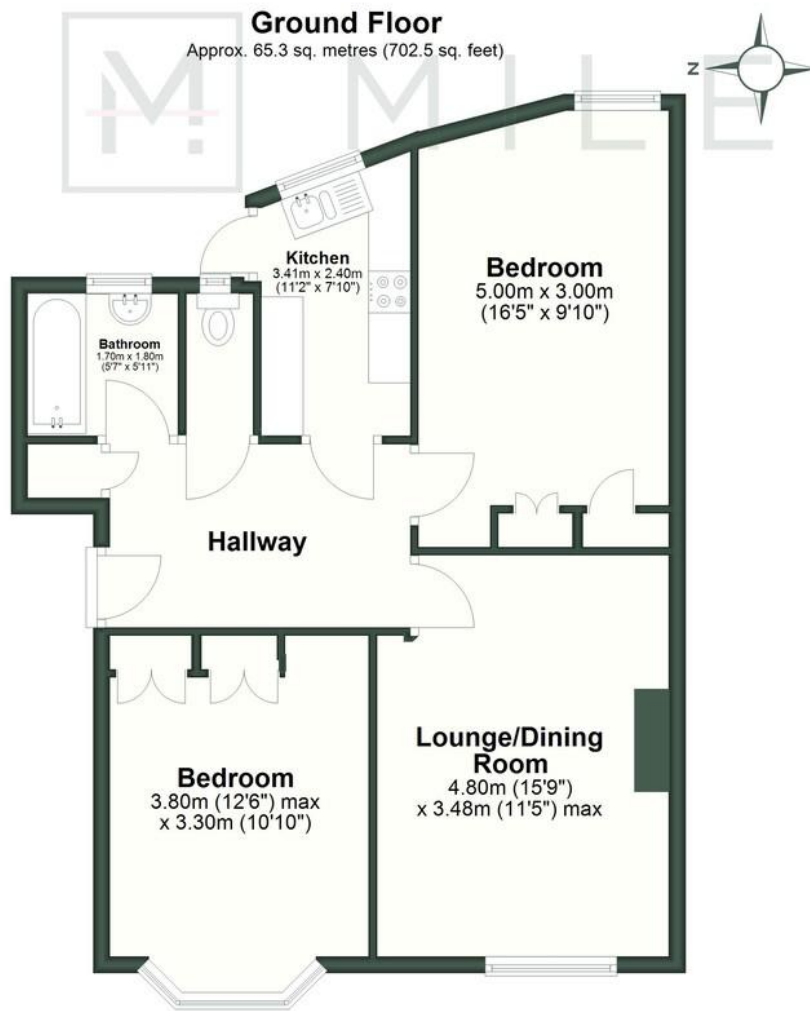
Waverly Court, Brondesbury Park, Brondesbury £2,000 pcm

Welcome to Waverley Court - a fantastic two-bedroom apartment available to let in the ever-popular NW6.

Ideally positioned between Queen's Park and Brondesbury, the property offers excellent connectivity, with both Brondesbury Park and Queen's Park stations just a short walk away, making commuting and access across London effortless.

Available immediately, this is a superb opportunity for tenants seeking a well-located and well-kept home in a vibrant, well-connected neighbourhood.

- Ground floor apartment
- Secure block
- Two bedrooms
- Unfurnished
- Available now
- Fantastic location
- Communal garden
- Walking distance from station
- Great condition
- Close to shops and transports



Total area: approx. 65.3 sq. metres (702.5 sq. feet)
Waverley Court

MONEY LAUNDERING REGULATIONS 2003: Intending purchasers will be asked to produce identification documentation at a later stage and we would ask for your co-operation in order that there will be no delay in agreeing the sale.

General: While we endeavour to make our sales particulars fair, accurate and reliable, they are only a general guide to the property and, accordingly, if there is any point which is of particular importance to you, please contact the office and we will be pleased to check the position for you, especially if you are contemplating travelling some distance to view the property.

Measurements: These approximate room sizes are only intended as general guidance. You must verify the dimensions carefully before ordering carpets or any built-in furniture.

Services: Please note we have not tested the services or any of the equipment or appliances in this property, accordingly we strongly advise prospective buyers to commission their own survey or service reports before finalising their offer to purchase.