

bear

Estate Agents



A spacious semi-detached family home positioned on the highly sought-after Northumberland Crescent overlooking Southchurch Park. Offering generous accommodation throughout, multiple reception rooms and a large rear garden, this characterful property is ideally suited to family living while being conveniently located close to the seafront, schools and excellent transport links. Available Now!

Northumberland Southend-on-Sea

£2,000 Per Month
Per Month

- Semi-Detached Family Home
- Bay Fronted Lounge with a Feature Fireplace
- Large Kitchen/Breakfast Room and a utility Room
- Two Further Double Bedrooms and One Single
- Generous Rear Garden
- Sought-After Northumberland Crescent Overlooking Southchurch Park
- Dining Room with a Feature Fireplace and French Doors
- Bay Fronted Master Bedroom with Built-In Wardrobes
- Three Piece Family Bathroom and External WC
- Double Glazing and Gas Central Heating



Northumberland Crescent



The property begins with a porch which leads into a welcoming entrance hall, complete with useful built-in storage. To the front of the home is a charming bay fronted lounge featuring a characterful fireplace, creating a cosy and inviting living space. The dining room sits to the rear and also benefits from a feature fireplace, along with French doors that open out onto the garden, making it an ideal space for family meals and entertaining. The large kitchen/breakfast room provides ample workspace and storage, with plenty of room for informal dining. From here, the layout continues into a practical utility room which also offers a courtesy side door leading directly into the garden. Upstairs, the landing provides further built-in storage and leads to four bedrooms. The bay fronted master bedroom is a particularly generous space and benefits from ample built-in wardrobes. Two further double bedrooms provide comfortable accommodation, while the fourth bedroom, a single, features a bay window that allows natural light to flood the room. A well presented three piece family bathroom completes the first floor. Externally, the property boasts a generous rear garden which offers excellent space for outdoor seating, entertaining and family activities. There is also the benefit of an external WC. Additional features include double glazing and gas central heating.

Situated on the desirable Northumberland Crescent in Southend-on-Sea, the property enjoys an enviable outlook over Southchurch Park. The home falls within catchment of Greenways Primary School and Southchurch High School, whilst also being within easy reach of several highly regarded grammar schools. The location offers convenient access to the nearby Southend Seafront, along with local amenities and bus links. Rail connections can be found at Southend East Railway Station, providing direct routes into London and surrounding areas.

Four Bedroom Semi-Detached House

Porch

Entrance Hall

Lounge

17'7 x 13'3

Dining Room

13'3 x 12'10

Kitchen/Breakfast Room

16'10 x 9'10

Utility Room

8'6 x 6'4

Landing

Bedroom One

17'5 x 10'6

Bedroom Two

13'8 x 12'11

Bedroom Three

12'7 x 9'10

Bedroom Four

9'11 x 6'11

Three Piece Bathroom

7'8 x 6'10

Storage

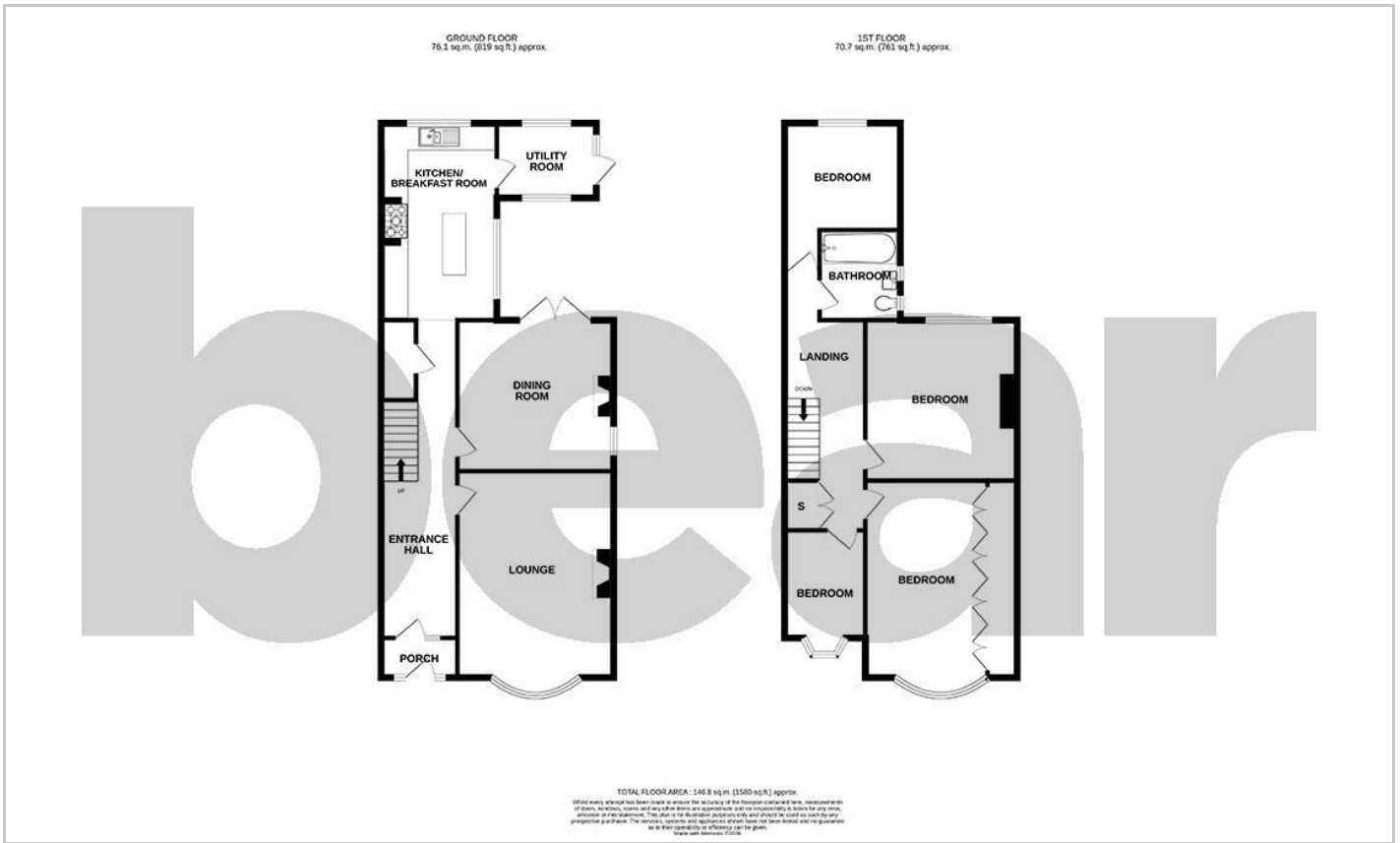
Garden

Agents Notes

There is potential for off-street parking STPP.



Floor Plan



Area Map



Viewing

Please contact our Westcliff-on-Sea Office on 01702 899 780 if you wish to arrange a viewing appointment for this property or require further information.

These particulars, whilst believed to be accurate are set out as a general outline only for guidance and do not constitute any part of an offer or contract. Intending purchasers should not rely on them as statements of representation of fact, but must satisfy themselves by inspection or otherwise as to their accuracy. No person in this firm's employment has the authority to make or give any representation or warranty in respect of the property.

797 London Road, Westcliff-on-Sea, Essex, SS0 9SY

Office: 01702 899 780 info@bearlettings.co.uk

Energy Efficiency Graph

