



Landmark Place, offers over £125,000

- Executive apartment, Landmark Place
- Modern fitted kitchen with appliances
- One double bedroom
- Open plan living room
- Security entry, concierge
- The heart of Cardiff City Centre
- EPC Rating: C





About the property

We are pleased to offer a fantastic opportunity to purchase this chain free, one double bedroom 13th floor apartment benefiting from spectacular views, open plan kitchen/ living space, family bathroom and an ensuite shower room to the master bedroom!! Perfect investment opportunity.

Accommodation

Communal Entrance

Enter the building through the secure communal entrance leading to the spacious lobby with concierge.

Independant Entrance

Wooden front door with spy hole, carpeted flooring, electric wall heater, video intercom system, inset spot lights, doors to all rooms including a storage and airing cupboard

Lounge

15' 2" x 13' 1" (4.62m x 3.99m)



Carpeted floor, full height double glazed windows, two electric heaters and an open plan design to the kitchen.

Carpeted floor, built in wardrobes, electric heater and a double glazed window.

Kitchen

10' 2" x 6' 6" (3.10m x 1.98m)

Fitted with a range of matching wall and base units, stainless steel sink and drainer with a mixer tap, integrated electric hob, oven and cooker hood, space and plumbing for a washing machine, integrated fridge, splash backs and wood flooring.

Bathroom

Partially tiled walls, paneled bath with mixer tap shower fitting, low level W.C, pedestal wash hand basin, heated towel rail, extractor fan, vinyl flooring.

Bedroom One

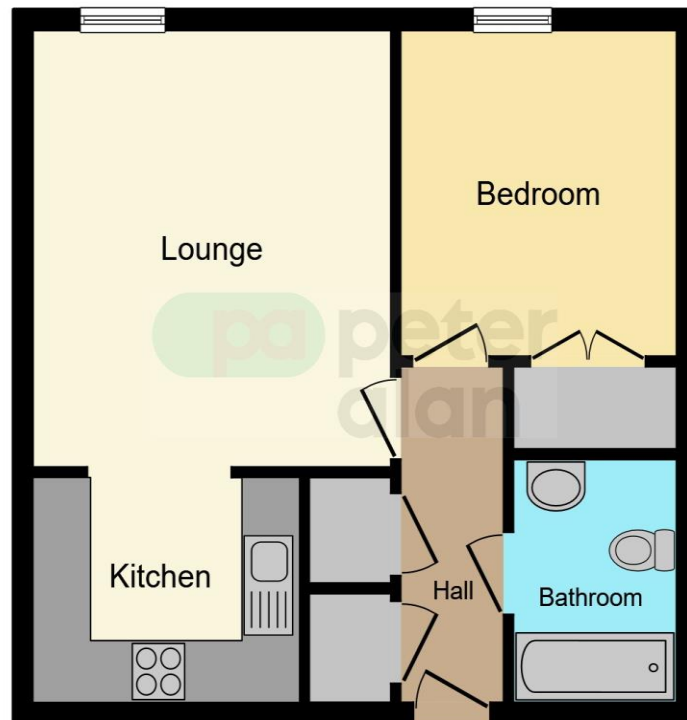
10' 5" x 10' 7" max (3.17m x 3.23m max)

02920 462246

albanyroad@peteralan.co.uk



Floorplan



This floor plan is for illustrative purposes only. It is not drawn to scale. Any measurements, floor areas (including any total floor area), openings and orientation are approximate. No details are guaranteed, they cannot be relied upon for any purpose and they do not form part of any agreement. No liability is taken for any error, omission or misstatement. A party must rely upon its own inspection(s). Powered by www.focalagent.com

Important Information

Note while we endeavour to make our sales details accurate and reliable, if there is any point which is of particular interest to you, please contact the office and we will be pleased to confirm the position for you. We have not personally tested any apparatus, equipment, fixtures, fittings or services and cannot verify they are in working order or fit for their purposes. Nothing in these particulars is intended to indicate that carpets or curtains, furnishings or fittings, electrical goods (whether wired or not). Gas fires or light fittings or any other fixtures not expressly included form part of the property offered for sale. This computer generated Floorplan, if applicable, is intended as a general guide to the layout and design of the property. It is not to scale and should not be relied upon for dimensions. Tenure: We cannot confirm the tenure of the property as we have not had access to the legal documents. The buyer is advised to obtain verification from their solicitor or surveyor.

Peter Alan Limited is registered in England and Wales under company number 2073153, Registered Office is Cumbria House, 16-20 Hockliffe Street, Leighton Buzzard, Bedfordshire, LU7 1GN. VAT Registration Number is 500 2481 05. For activities relating to regulated mortgages and non-investment insurance contracts, Peter Alan Limited is an appointed representative of Connells Limited which is authorised and regulated by the Financial Conduct Authority. Connells Limited's Financial Services Register number is 302221. Most buy-to-let

