



## Tidemill Square, SE10

£795,000

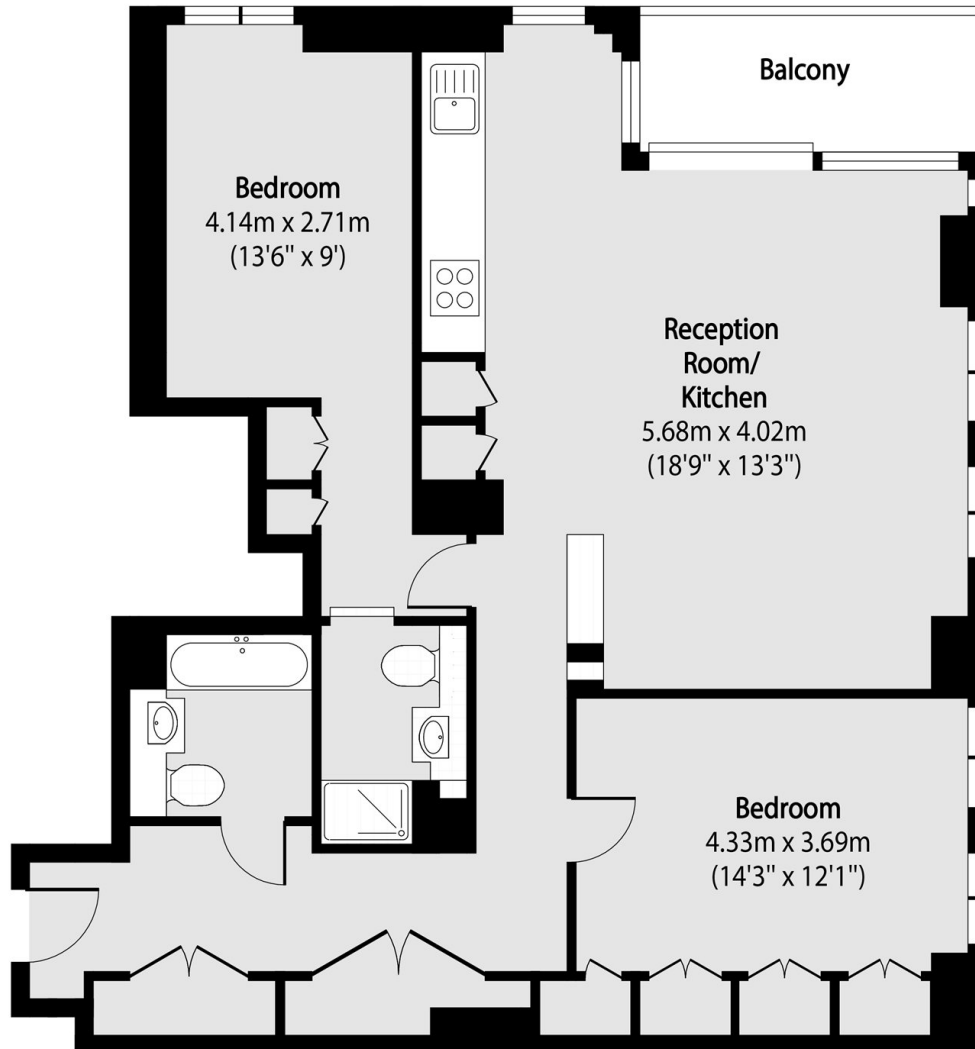
This luxurious two double bedroom two bathroom apartment with gorgeous views across the River Thames. Situated in this prestigious building and benefitting from a private balcony overlooking the river as well as amenities such as a gym, concierge, cinema room and communal roof terrace.

Greenwich Peninsula is a modern community that has been designed with the residents in mind offering a range of amenities, which include North Greenwich Station for direct connections to Canary Wharf, London Bridge and The West

### Features

- Amazing River Views
- Two Bedrooms
- Two Bathrooms
- Immaculate Throughout
- Cinema Room
- Concierge
- 26th Floor

# Tidemill Square, London, SE10



Total area (approx): 91.05 sq m (980 sq. ft)

Balcony total area (approx): 5.55 sq m (60 sq. ft)

## Dexters

Greenwich  
275 Greenwich High Road  
Greenwich  
London  
Sales  
020 8815 2215

Energy Rating: B. We aim to make our particulars both accurate and reliable. However they are not guaranteed; nor do they form part of an offer or contract. If you require clarification on any points then please contact us, especially if you're traveling some distance to view. Please note that appliances and heating systems have not been tested and therefore no warranties can be given as to their good working order.

 **RICS** | Regulated  
Estate Agent  
and Letting Agent

[dexters.co.uk](https://www.dexters.co.uk)