



📍 Flat 7, 46 Marshfield Road, Chippenham, SN15 1JT

🔗 £975 PCM

Situated in central Chippenham, a short walk from the town centre and railway station, is this spacious and well-presented two bedroom first floor apartment, which makes up part of an attractive period conversion, benefitting from allocated off-road parking.

- First Floor Apartment
- Two Bedrooms
- Part of Period Building Conversion
- Available Now
- Newly Redecorated
- Allocated Off-Road Parking
- Walking Distance to Railway Station & John Coles Park
- M4 Access



🏠 EPC Rating D



Making up part of an attractive period conversion, is this spacious and newly redecorated two bedroom first floor apartment, superbly positioned within walking distance of Chippenham town centre and railway station.

The accommodation is comprised over a single level, and briefly comprises; communal entrance, communal hall / landing, private entrance, entrance hall with storage cupboard, large kitchen / dining / sitting room, one double bedroom, one single bedroom, and a modern bathroom.

Externally the property benefits from an allocated parking space to the rear of the property.

Available now, £975pcm, unfurnished (Sorry, no pets)

### **Situation**

Situated just a short distance from the town centre and offering excellent access to all amenities including mainline railway station to London (Paddington) in 65 minutes. Within reasonable access there are primary and senior schools together with the popular John Coles Park. There are good commuter links via the A4, A420 and the M4 motorway which gives access to the larger centres of Bristol, Bath, London and Swindon.

### **Property Information**

Council Tax Band; A

Mains Electricity, Water & Drainage

Electric Heating

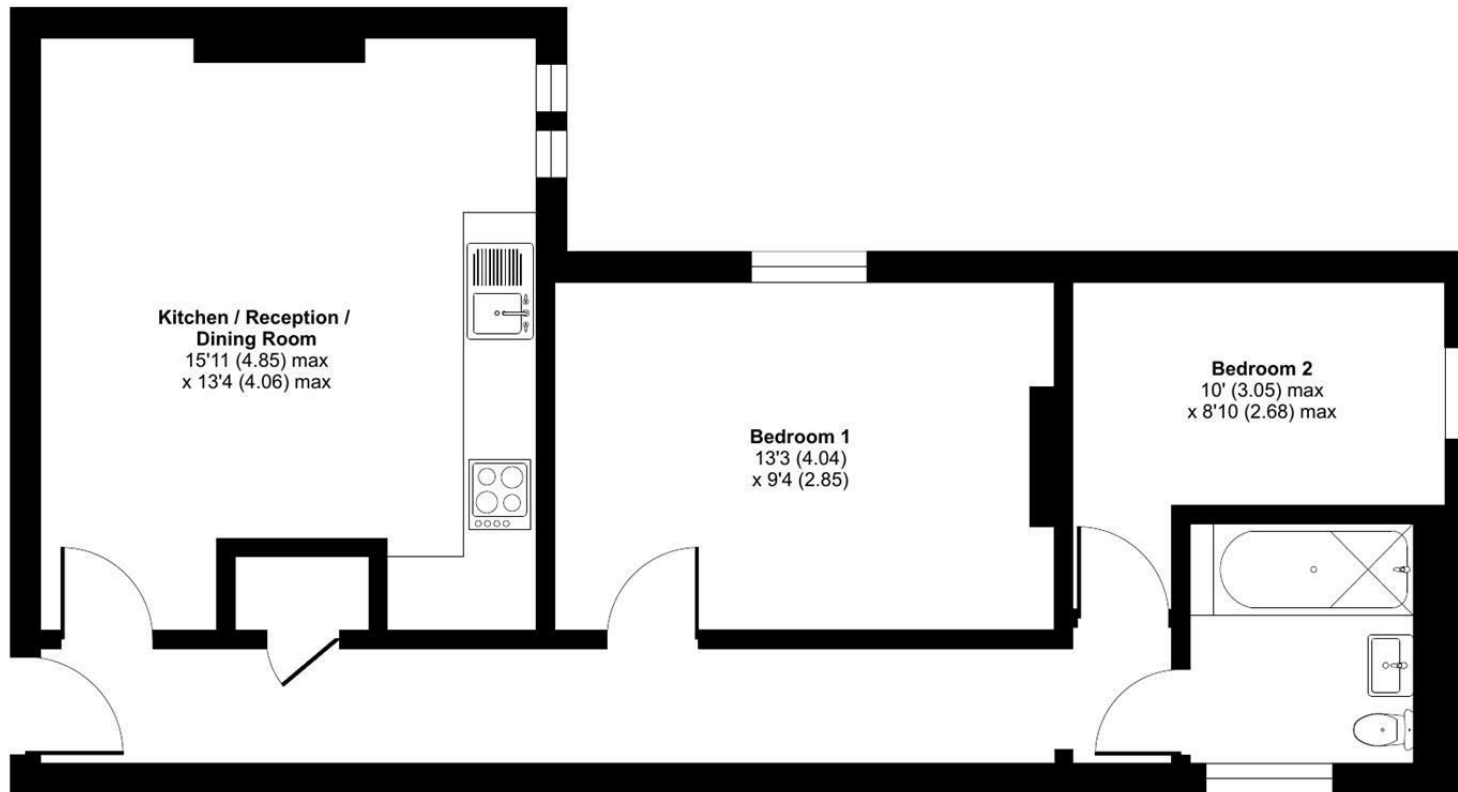
EPC Rating; D



# Marshfield Road, Chippenham, SN15

Approximate Area = 576 sq ft / 53.5 sq m

For identification only - Not to scale



FIRST FLOOR



Floor plan produced in accordance with RICS Property Measurement 2nd Edition, Incorporating International Property Measurement Standards (IPMS2 Residential). © ncthemcom 2025. Produced for Strakers. REF: 1368593

Disclaimer These particulars, whilst believed to be accurate are set out as a general outline only for guidance and do not constitute any part of an offer or contract. Intending purchasers should not rely on them as statements of representation of fact, but must satisfy themselves by inspection or otherwise as to their accuracy. No person in this firm's employment has the authority to make or give any representation or warranty in respect of the property. All measurements and distances are approximate only. Your home is at risk if you do not keep up repayments on a mortgage or other loan secured on it.