



BREAKSPEARS ROAD, SE4

£585,000

Four bedroom apartment
Split level circa 1330 Sq Ft
Share of freehold
18' x 15' Lounge
Conservation area
Energy rating: d

@marshandparsons
marshandparsons.co.uk

MARSH &
PARSONS



ABOUT THE PROPERTY

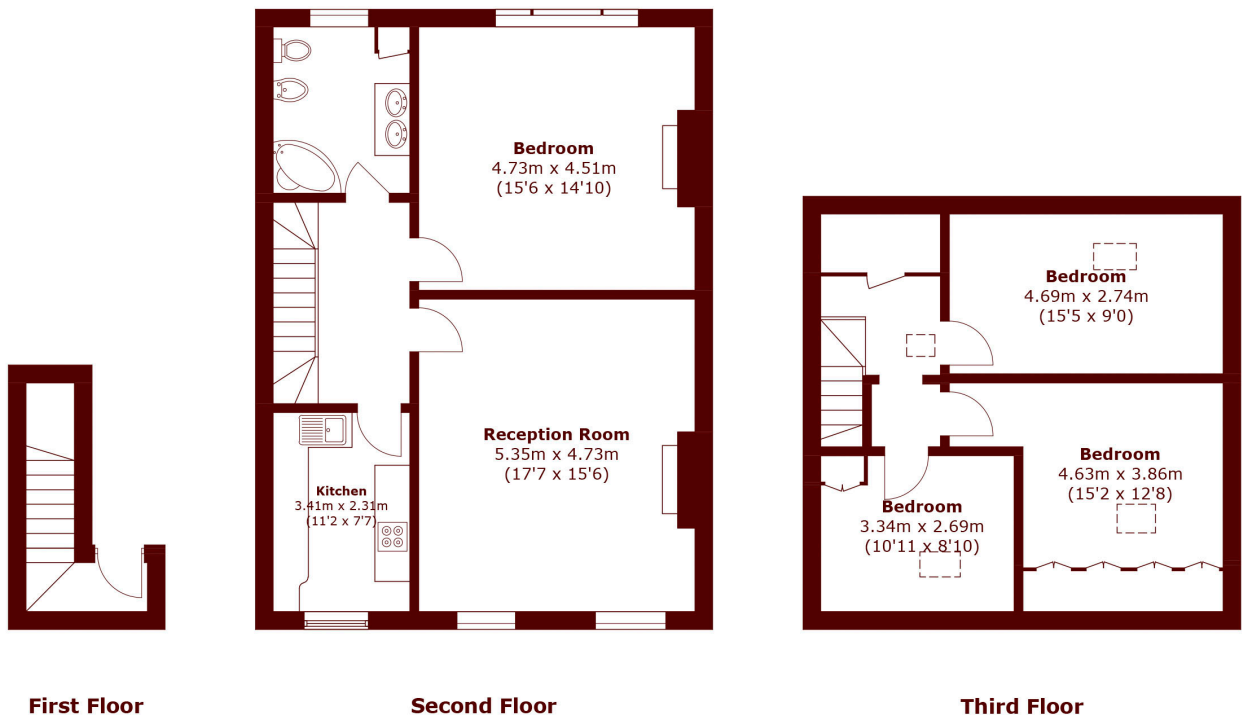
A huge 1330 Sq Ft share of freehold, split level apartment, arranged over the top floors of this attractive Victorian terrace.

Lovely period fireplaces are found in both the great size lounge and the primary bedroom. The kitchen and bathroom are also on this floor too, whilst a further three double bedrooms are found on the top floor.

Set in the heart of the Brockley Conservation Area, the busy commuter will find the location a delight as Zone 2 Brockley Overground and St John's are found equidistant.



STEP INSIDE BREAKSPEARS ROAD



Total area (approx.): 123.6 sq. m (1,330.4 sq. ft)

Brockley
020 8629 8164

Energy Rating: D We aim to make our particulars both accurate and reliable. However, they are not guaranteed; nor do they form part of an offer or contract. If you require clarification on any points then please contact us, especially if you're traveling some distance to view. Please note that appliances and heating systems have not been tested and therefore no warranties can be given as to their good working order

**MARSH &
PARSONS**