



Duke Road, London, W4
Guide Price £995,000

WHITMAN & CO.
SALES · LETTINGS · COMMERCIAL



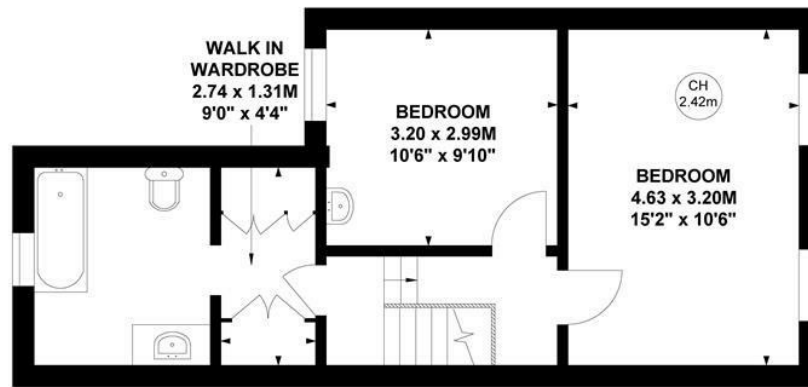
A well-presented period terraced house located on this sought-after road in the ever-popular Glebe Estate, offering scope to extend both into the loft and side return. The existing accommodation comprises a 21'6 through reception room with a bay window, a 19'8 kitchen/breakfast room, a secluded patio garden, two double bedrooms, a family bathroom with a walk-in wardrobe area and a large loft. The house has the potential to create two further bedrooms and a bathroom in the loft, along with a side return kitchen extension STPP. Located within a short walk of Chiswick High Road's shops, cafes and restaurants, Chiswick House and Grounds and The River. Transport links include Turnham Green station, local bus routes and the A4/M4 for routes in and out of London. Offered for sale with no onward chain.



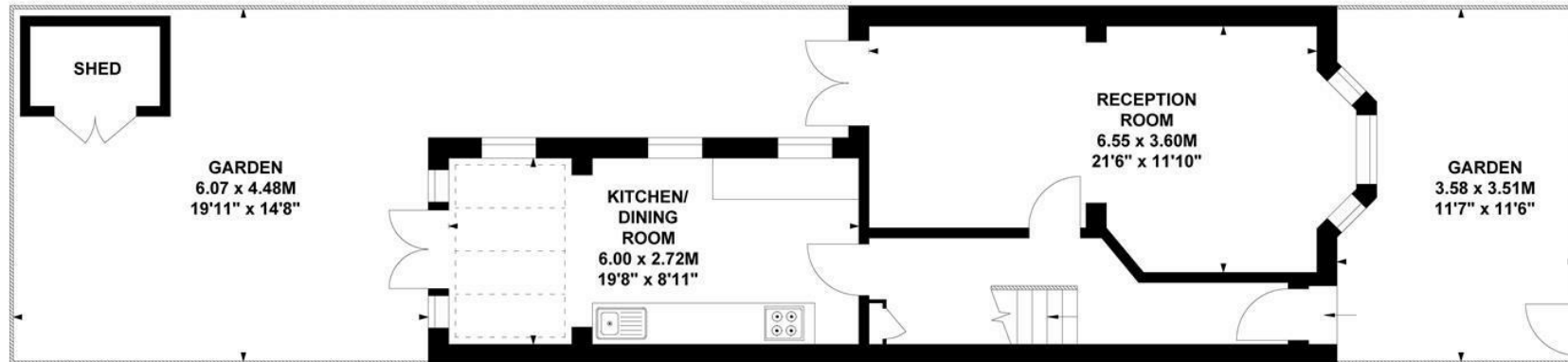
Duke Road, W4

Approximate gross internal area
89.30 sq m / 961 sq ft

Key :
CH - Ceiling Height



First Floor



Ground Floor

Not to scale, for guidance only and must not be relied upon as a statement of fact.

All measurements and areas are approximate only

- Period terraced house
- Potential to extend into the loft and side return STPP
- 21'6 Through reception room

- Sought after 'Glebe Estate' location
- Secluded patio garden
- No onward chain

Tenure - Freehold
Local Authority - Hounslow
Council Tax - Band F

