



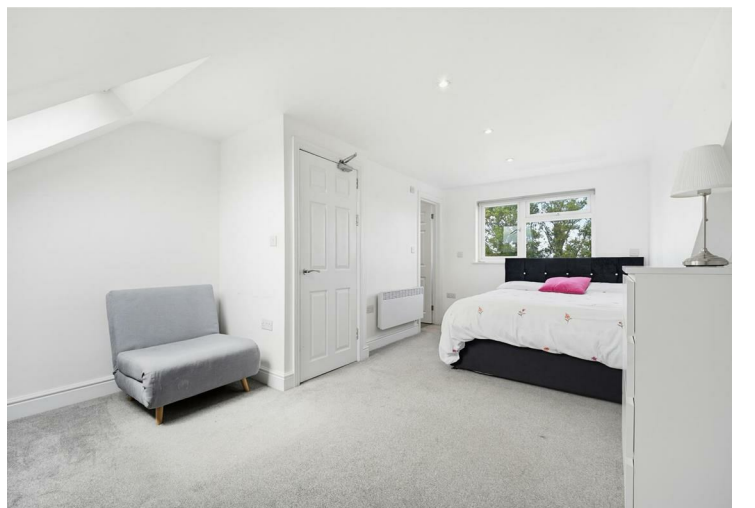
Freehold / House - Semi-Detached

Beechmount Avenue, Hanwell

£769,000

A RECENTLY, FULLY EXTENDED AND WELL APPOINTED FOUR-BEDROOM SEMI DETACHED FAMILY HOUSE WITH A GOOD SIZE REAR GARDEN. ATTRACTIVELY OFFERED CHAIN FREE

- Skillfully extended 1930's semi
- 4 bedrooms (1 currently an office)
- 2 bathrooms
- Large rear extended living/dining rooms
- Fitted kitchen
- Further lounge
- Well presented throughout
- Excellent sized garden
- GCH&DG
- Chain free



Freehold / House - Semi-Detached

Beechmount Avenue, W7 3AG

£769,000

This spacious chain free family home comes with two reception rooms, fitted kitchen, downstairs cloakroom, four bedrooms, two bathrooms (one ensuite), modern loft conversion, gas fired central heating, recently built rear extension, double glazing, large rear garden, offered chain free.

Beechmount Avenue is a popular residential street well placed just off Greenford Avenue with its local shops, bus services and numerous Primary and secondary schools including Mayfield, Hobbayne, Brentside and Drayton Manor high schools.

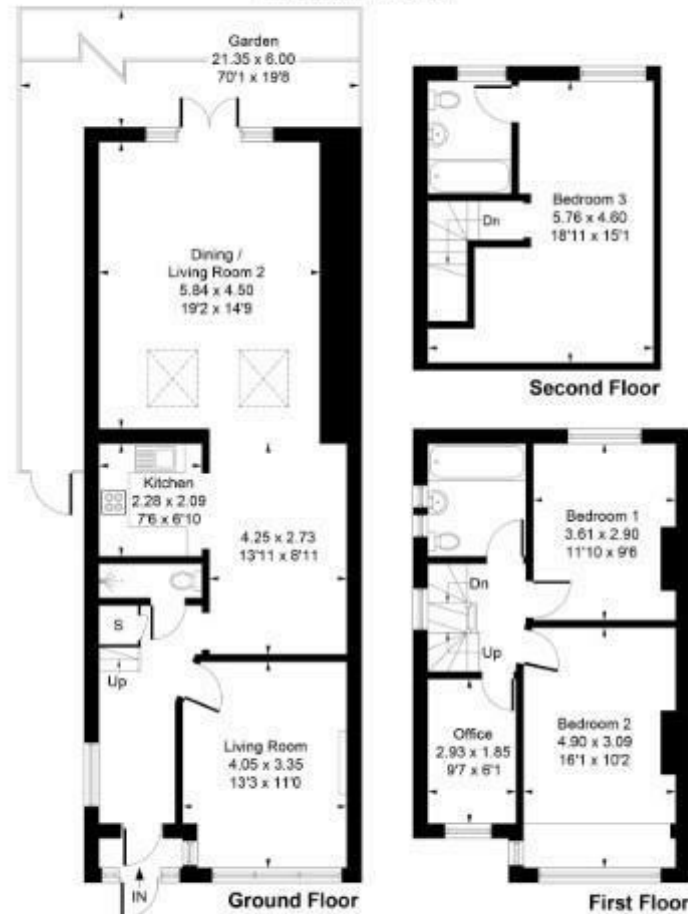


19 Greenford Avenue, Hanwell, London, W7 1LD
020 8567 3219



20 Beechmount Avenue, Hanwell, W7 3AG

Approximate Gross Internal Area
140.15 sq m / 1509 sq ft



Whilst every attempt has been made to ensure the accuracy of the floor plan contained here, measurements of doors, windows, rooms and any other items are approximate and no responsibility is taken for any error, omission, or mis-statement. This plan is for illustrative purposes only and should be used as such by any prospective purchaser.
Produced by jcphtographystudio.com

Council Tax Band

E

Energy Performance Graph

Energy Efficiency Rating		
	Current	Potential
Very energy efficient - lower running costs		
(92 plus) A		
(81-91) B		83
(69-80) C	71	
(55-68) D		
(39-54) E		
(21-38) F		
(1-20) G		
Not energy efficient - higher running costs		
England & Wales	EU Directive 2002/91/EC	

Call us on

020 8567 3219

hanwellsales@sintonandrews.co.uk

www.sintonandrews.co.uk

Agents Note: Whilst every care has been taken to prepare these particulars, they are for guidance purposes only. All measurements are approximate and are for general guidance purposes only and whilst every care has been taken to ensure their accuracy, they should not be relied upon and potential buyers are advised to recheck the measurements.