



Marsh Wall, E14

£375,000

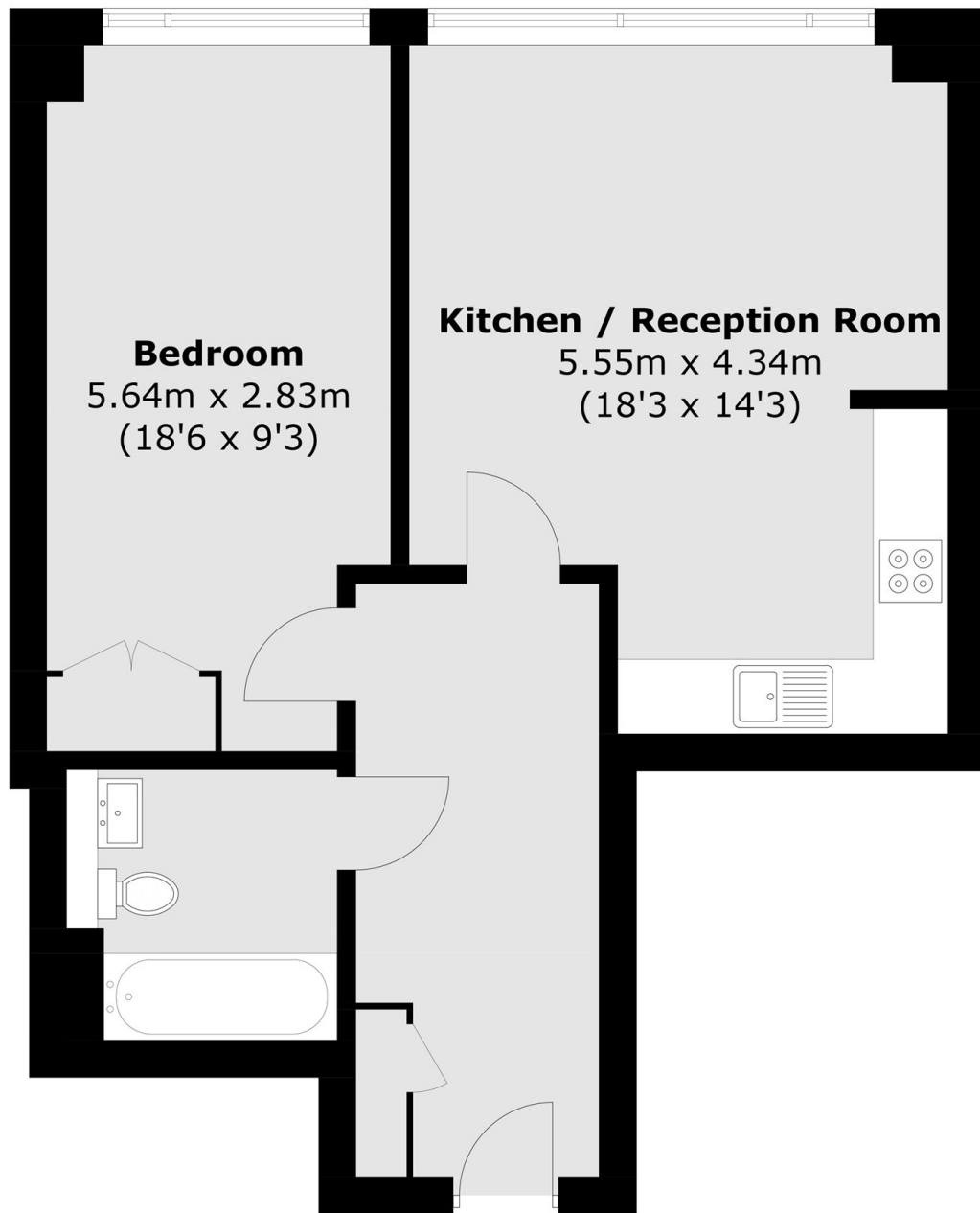
Positioned on the thirteenth floor of Landmark West Tower, this well presented one bedroom apartment offers views across the River Thames. Floor to ceiling windows allow natural light throughout, while the property features a spacious open plan living and dining area designed to maximise the outlook. The contemporary kitchen includes integrated appliances, creating a practical space for modern living.

Landmark West Tower is ideally located on Marsh Wall, close to Canary Wharf and its wide selection of shops, restaurants and leisure facilities. Heron Quays DLR station and Canary Wharf station are both nearby, providing excellent connections across London via the DLR and Jubilee line.

Features

- 13th Floor One Bedroom
- River Thames Views
- Floor-to-Ceiling Windows
- Open-Plan Living Space
- Modern Integrated Kitchen
- 24-Hour Concierge & Gym

Marsh Wall, London, E14



Total area (approx.): 53.2 sq. m (572.6 sq. ft)