



## STANSFIELD ROAD, SW9

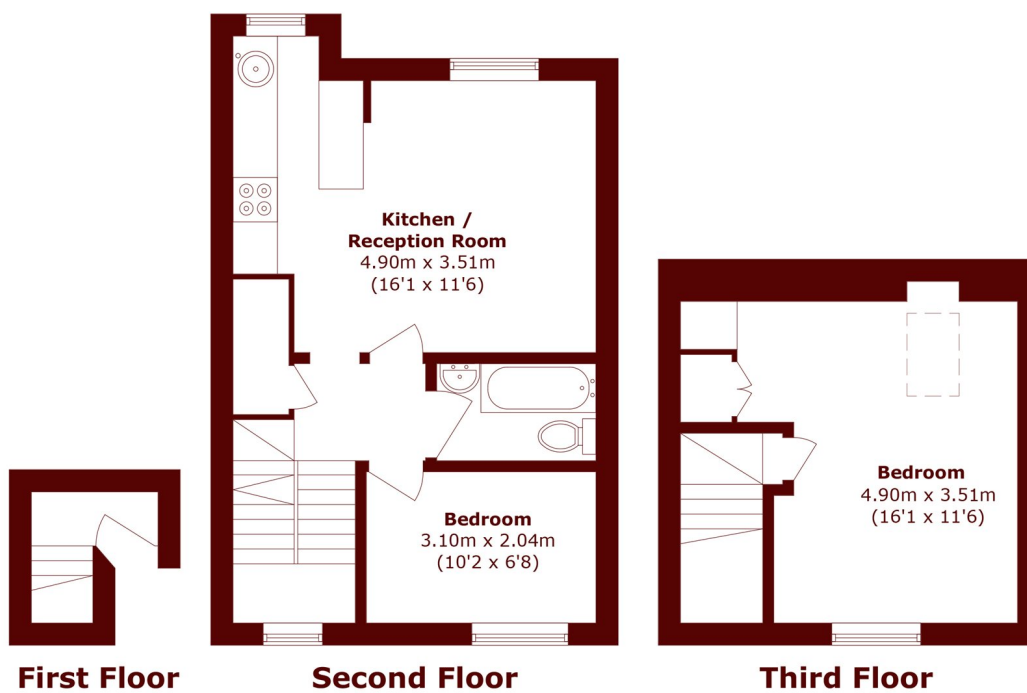
£499,950

A charming split level flat set over the upper floors of a beautiful period building comprising two double bedrooms, a three piece bathroom and an open plan kitchen/reception room.

Two Double Bedrooms  
Split-Level  
Share Of Freehold

Period Property  
Open Plan Layout  
Energy Rating: C

# STEP INSIDE STANSFIELD ROAD



Total area (approx.): 59.6 sq. m (641.5 sq. ft)

**Brixton**  
020 7733 4595

Energy Rating: C We aim to make our particulars both accurate and reliable. However, they are not guaranteed; nor do they form part of an offer or contract. If you require clarification on any points then please contact us, especially if you're traveling some distance to view. Please note that appliances and heating systems have not been tested and therefore no warranties can be given as to their good working order

**MARSH &  
PARSONS**