



1 Collingham Road | London | SW5 0NT

£2,572 Per month

ESON2
REAL ESTATE

Key features

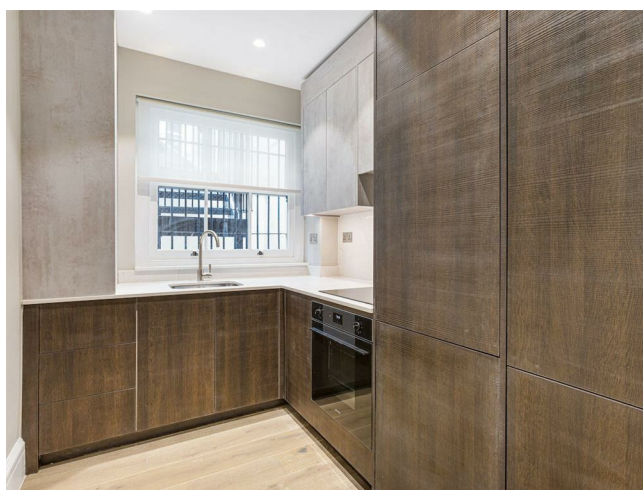
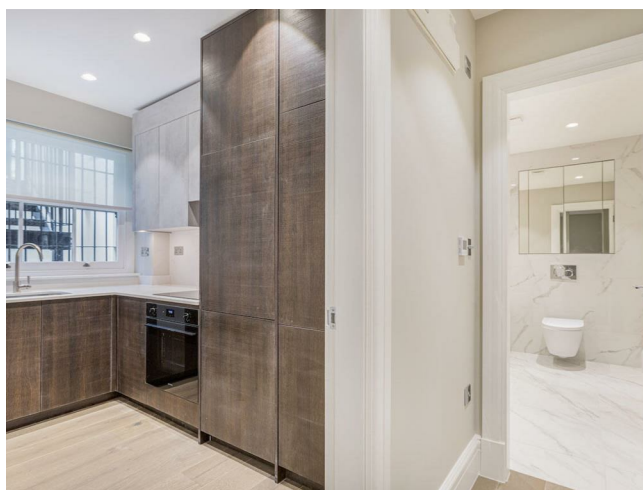
- High ceilings, light-filled flat
- Modern, fully equipped kitchen
- Heart of South Kensington
- Moments from Gloucester Road
- Near luxury shops, fine dining
- Close to world-renowned museums
- Perfect for professionals
- Refined, comfortable city home

Description

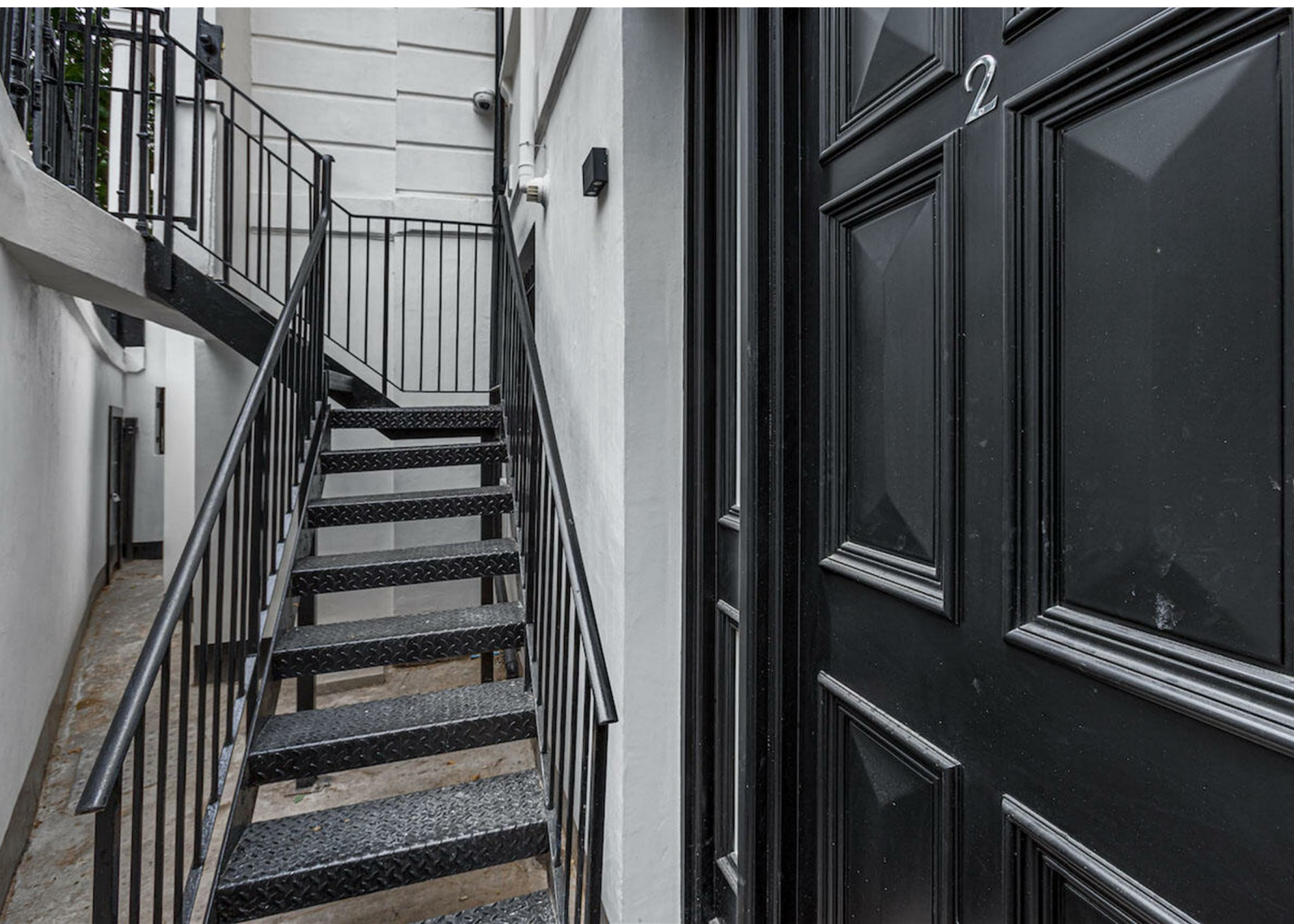
A beautifully refurbished one-bedroom flat with high ceilings, light-filled interiors, and a modern, fully equipped kitchen. Stylishly furnished throughout, it offers a refined and comfortable city home.

Set in the heart of South Kensington, just moments from Gloucester Road station, luxury shops, fine dining, and world-renowned museums, this property provides an exceptional base for professionals seeking long-term London living.

Directions



A recently refurbished one-bedroom flat in the heart of South Kensington, offered fully furnished with light-filled interiors and high ceilings. The neutral décor and thoughtfully designed layout create a calm, welcoming space for modern city living.



Floor plans



Energy Efficiency Rating		
	Current	Potential
<i>Very energy efficient - lower running costs</i>		
(92 plus) A		
(81-91) B		
(69-80) C	71	78
(55-68) D		
(39-54) E		
(21-38) F		
(1-20) G		
<i>Not energy efficient - higher running costs</i>		
England & Wales	EU Directive 2002/91/EC	

Council Tax Band E EPC Rating C



301 Michelin House 81 Fulham road
London
Greater London
SW3 6RD
07920 257649
fayeel@eson2.co.uk
www.eson2.co.uk