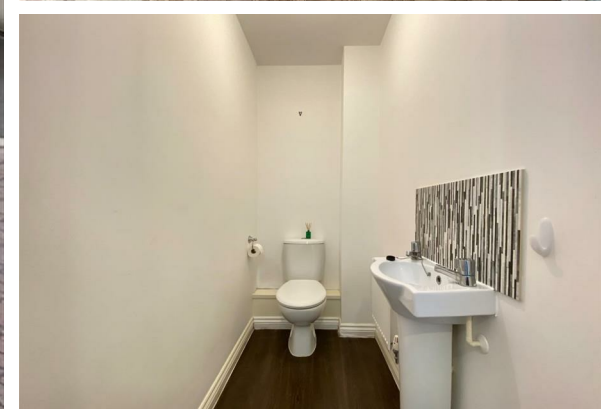




TO LET

18 The Bramblings, Melksham, Wiltshire, SN12 7GF

£1,500 PCM



- Four bedroom family home
- Long term let
- Garage & driveway parking
- Enclosed rear garden
- EPC - C
- Council Tax - D (Wiltshire Council)
- Pets are not considered

Discover Melksham: A Charming Wiltshire Town with Excellent Connectivity

Nestled along the banks of the River Avon, Melksham is a market town that blends historical charm with modern conveniences. It offers a welcoming community atmosphere complemented by a range of amenities.

Local Amenities and Lifestyle

Melksham boasts a high street filled with independent shops, cafes, and traditional pubs. For leisure and recreation, the town offers several parks and green spaces, including King George V Playing Field, which features a playground, skate park and is home to Melksham Parkrun. The nearby Melksham Community Campus enhances the town's leisure offerings with swimming pool, sports hall, gym and cafe.

THE PROPERTY

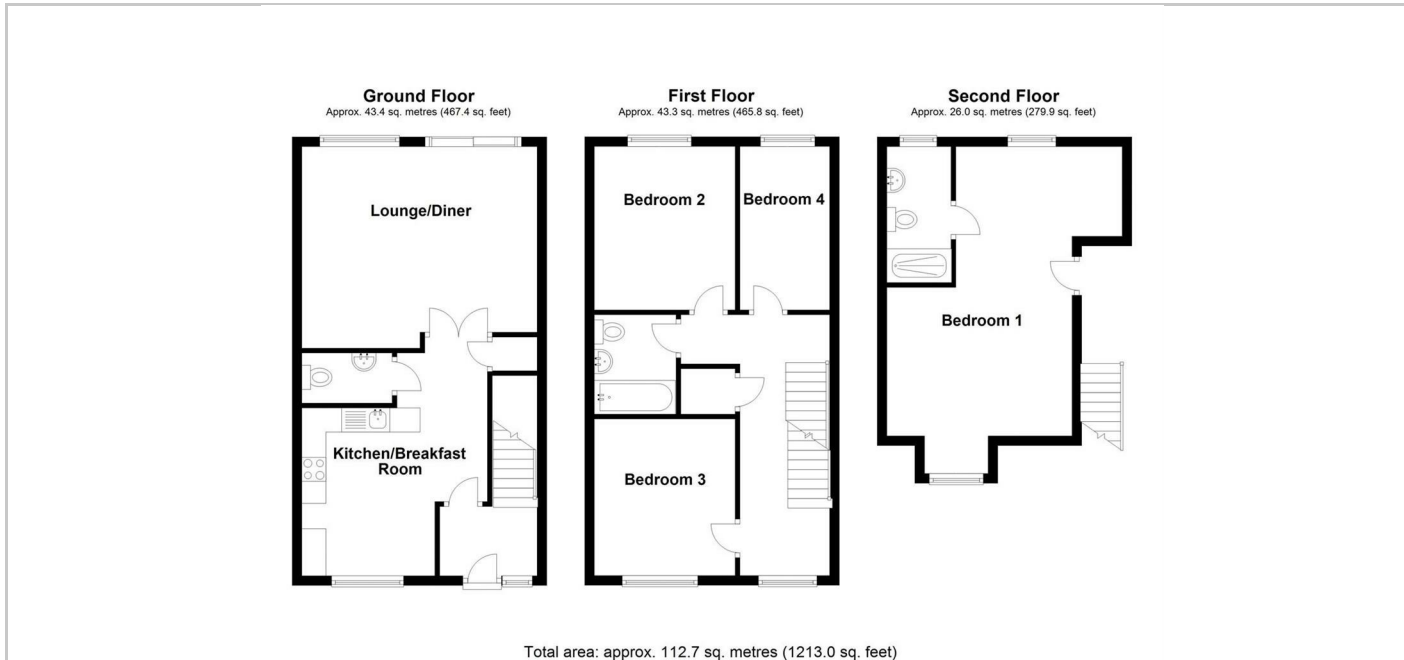
Blueleaf Property are delighted to offer this four bedroom semi detached family home.

The ground floor accommodation comprises entrance hall, kitchen breakfast room, lounge dining room with patio doors onto the rear garden, cloakroom and under stairs cupboard. The first floor accommodation comprises three bedrooms, family bathroom and airing cupboard and the second floor accommodation comprises the main bedroom with en-suite shower room.

The property further benefits from driveway parking, a single garage, enclosed rear garden, gas central heating and upvc double glazing.

The landlord would prefer a longer term tenancy. Pets are not considered Please note photos taken prior to current tenancy

All measurements are approx;
 Kitchen Breakfast Room: 3.85m x 4.86m
 Lounge: 4.88m x 3.85m ext 4.18m
 Bedroom One: 3.31m ext 4.74m x 1.86m ext 6m
 Bedroom Two: 3.38m x 3.03m
 Bedroom Three: 3.28m x 2.88m
 Bedroom Four: 3.39m x 1.86m
 Bathroom: 2.06m x 1.69m



SITUATION

Directions