



2 Bedroom
Ashford Road, NW2

 **Portland**
Trusted, every step of the way

£2,750 PCM

Portland Estate Agents are pleased to market Ashford Works – A unique Two bedroom Garden Flat in a factory conversion in a popular pocket of NW2.

Built originally over a 100 years ago and used as a factory, this structure has been expertly designed by BB Partnership Architects to create a selection of houses and flats within an incredibly unique building for the area.

Finished to an immaculate standard, tenants can expect to find a welcoming open plan kitchen on the ground floor with access to a private garden. Off of the corridor is an exceptional bedroom with ensuite and an abundance of space for wardrobes and desk, the family bathroom and another bright and airy bedroom.

Ashford Works also comes with secure bike storage and communal gardens. Tenants should note that a parking permit is not be available on this development. Positioned on a quiet residential road, this property is moments from the rolling green spaces of Gladstone Park. Transport Links are also close by with Cricklewood Station (Thameslink 0.7m) and Willesden Green (Jubilee 1m) a short stroll away.

** NO PARKING IS AVAILABLE ** for this flat.

- ** NO PARKING IS AVAILABLE **

- Industrial Factory Conversion

- Private Garden

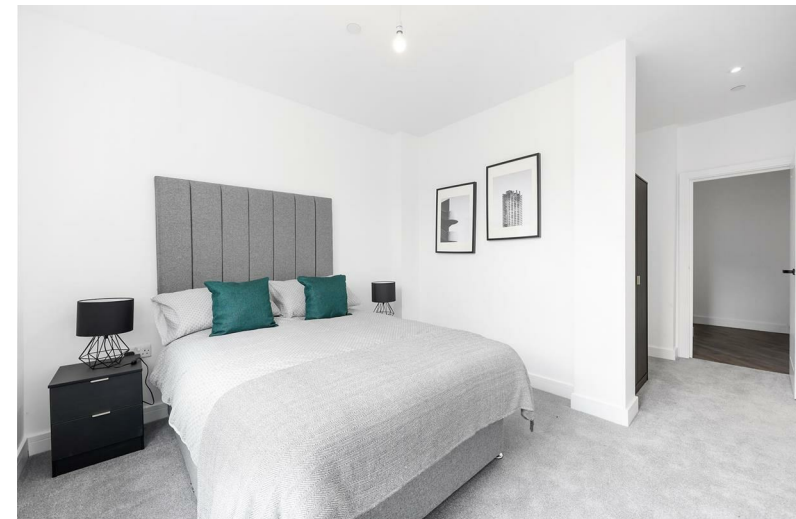
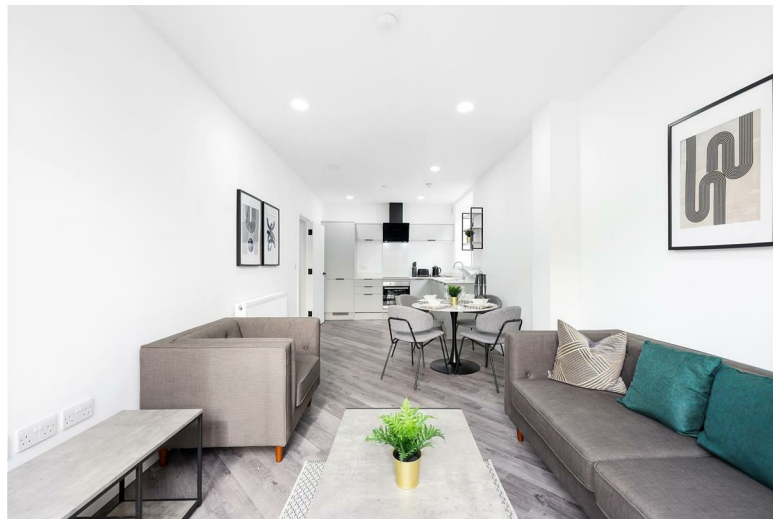
- Two Bedroom Garden Flat

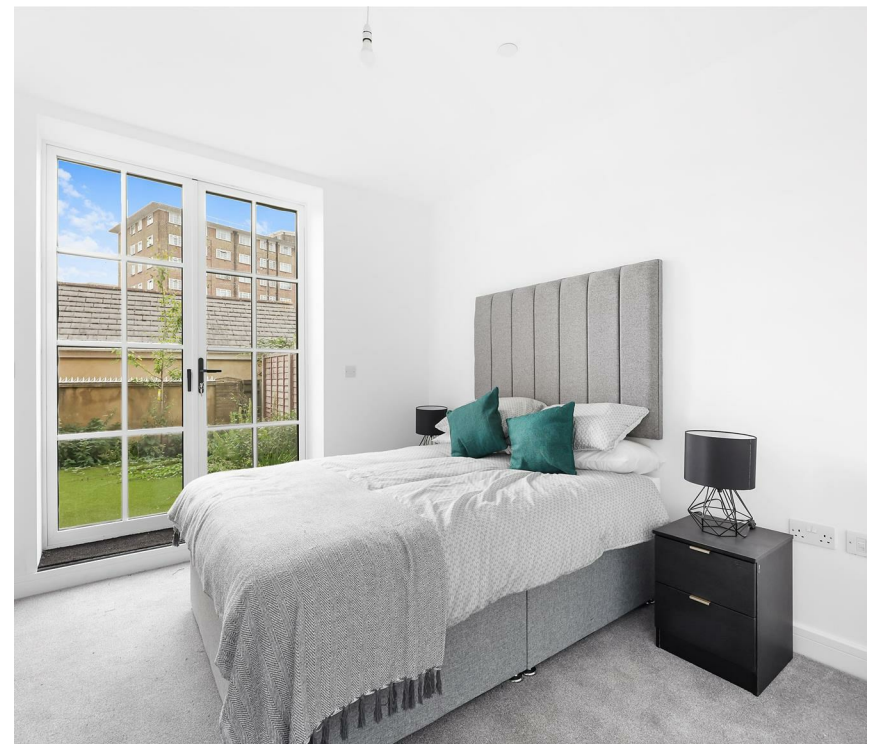
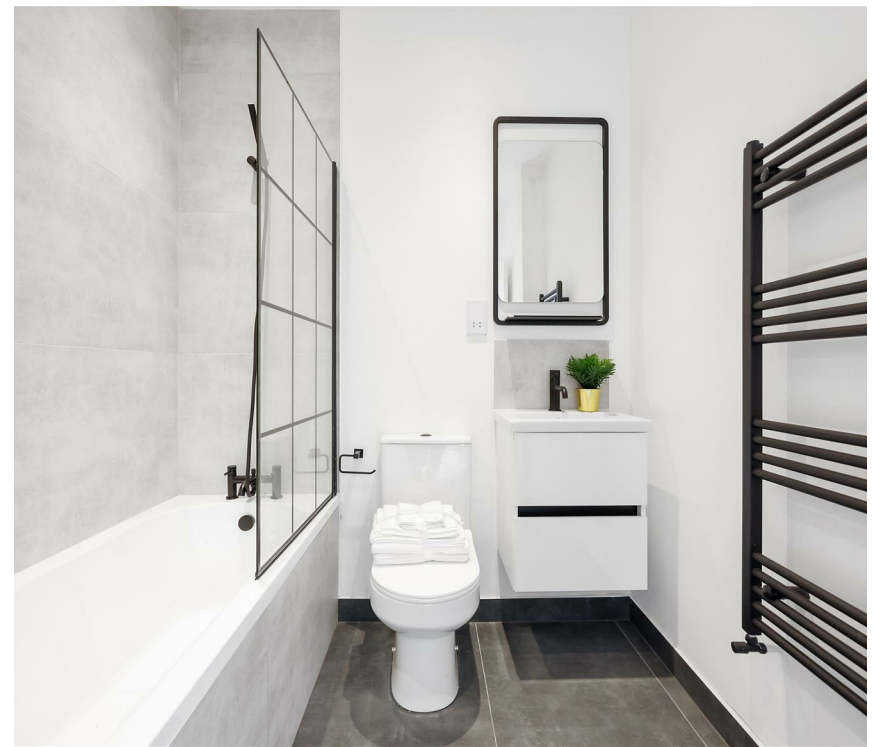
- Gated Development

- Incredible Finish

- Ground Floor

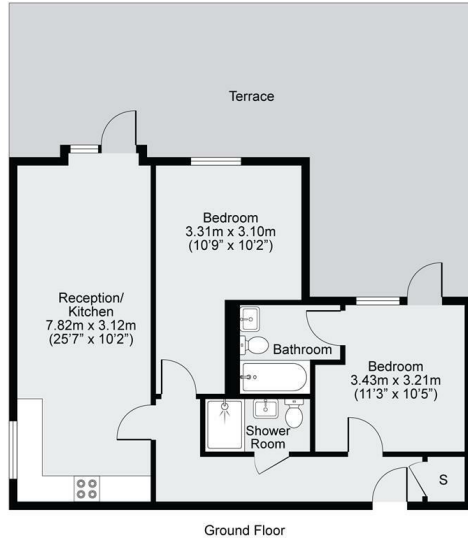
- EPC Band D





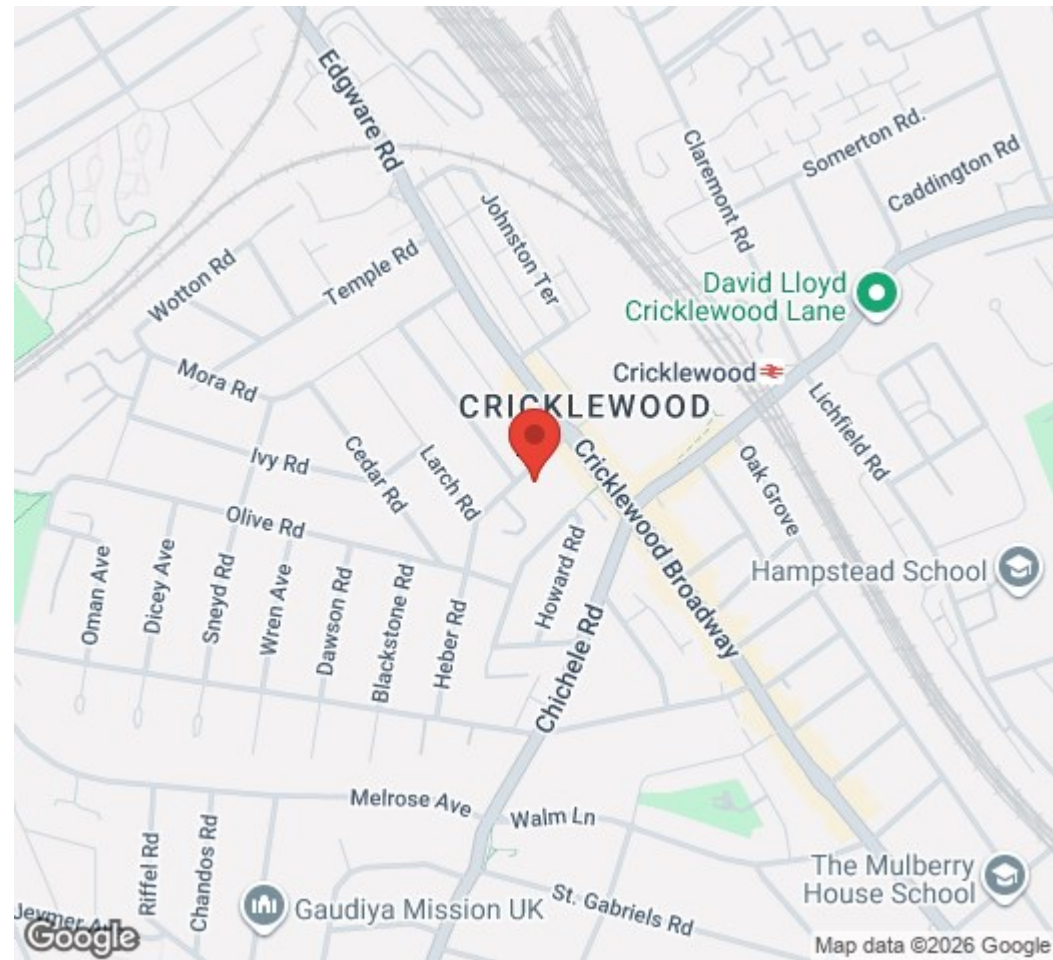
Ashford Road, Cricklewood, NW2

GROSS INTERNAL AREA
69.0sqm / 742.7sqft



GROSS INTERNAL AREA (GIA) This includes all the property 69.0sqm / 742.7sqft	TOTAL STORAGE SPACE Storage and wardrobe built area 1.0sqm / 10.7sqft	EXTERNAL STRUCTURAL FEATURES Garden, Balcony, Terrace, Verandah etc. 5.1sqm / 54.9sqft	RESTRICTED HEAD HEIGHT Limited use areas under 1.9m 0.0sqm / 0.0sqft
------------------------------------------------------------------------------------	-----------------------------------------------------------------------------	----------------------------------------------------------------------------------------------	----------------------------------------------------------------------------

Disclaimer: Floorplan measurements are approximate and are for illustrative purposes only. While we do not doubt the floorplan accuracy and completeness, you or your advisors should conduct a careful, independent investigation of the property in respect of monetary valuation.



Trusted, every step of the way

90 Walm Lane, London, NW2 4QY
020 8451 9844

info@portlandestateagents.co.uk
www.portlandestateagents.co.uk

