



## COPPERWOOD PLACE, SE10

£375,000

Modern apartment  
Two double bedrooms  
Two bathrooms  
Private balcony  
Close to stations  
Energy rating: b

@marshandparsons  
marshandparsons.co.uk

MARSH &  
PARSONS



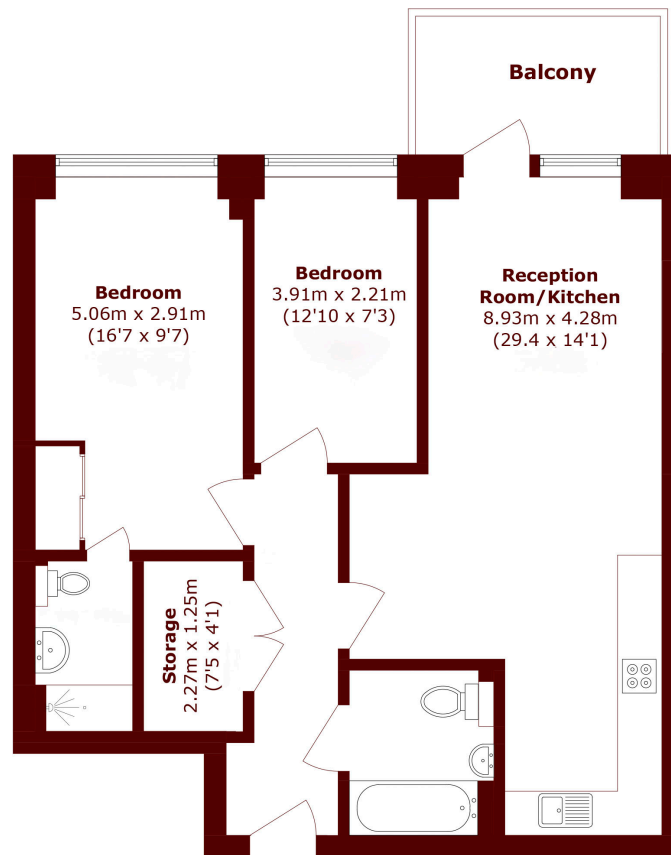
# ABOUT THE PROPERTY

This beautifully presented two bedroom apartment offers a spacious open plan reception room, providing ample versatility for both a large dining area and a comfortable lounge. The principal bedroom features a convenient en suite and a tall wardrobe, while the second double bedroom and separate family bathroom offer great flexibility for guests or a dedicated home office.

Ideally positioned in the SE10 area, the property is perfectly placed for a short walk to Greenwich or Lewisham stations, offering rapid links into Canary Wharf and the City. The historic charm of Greenwich market and the vast greenery of Greenwich park are also within easy reach.



# STEP INSIDE COPPERWOOD PLACE



Total area (approx.): 72.2 sq. m (777.1 sq. ft)

Balcony area (approx.): 6.2 sq. m (66.7 sq. ft)

Greenwich  
020 8312 8312

Energy Rating: B We aim to make our particulars both accurate and reliable. However, they are not guaranteed; nor do they form part of an offer or contract. If you require clarification on any points then please contact us, especially if you're traveling some distance to view. Please note that appliances and heating systems have not been tested and therefore no warranties can be given as to their good working order

MARSH &  
PARSONS