



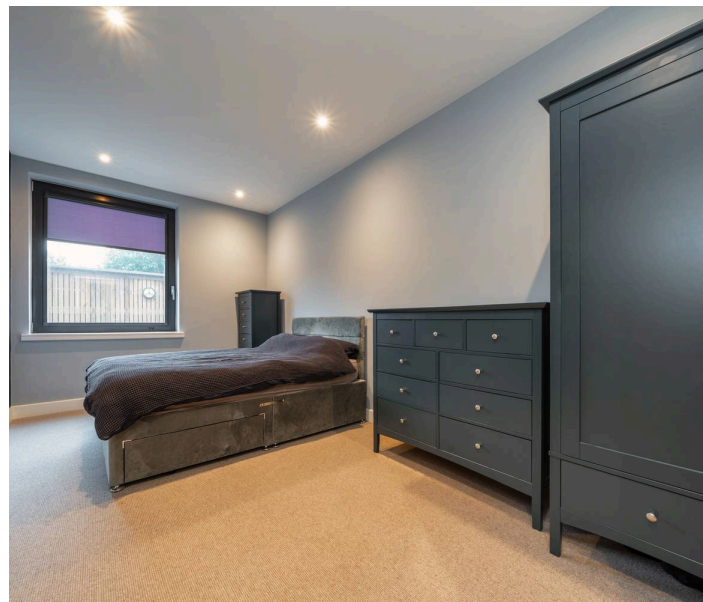
Wotton House

St Johns Road, Isleworth, TW7

£325,000

This spacious and impeccable one bedroom ground floor apartment offers you contemporary living and comes to the market chain free. Full height windows and its southerly aspect provide an abundance of natural light spreading over 517 sq ft. Boasting a fully integrated open plan kitchen and living room, a huge master bedroom, modern family bathroom and internal storage.

- Stunning One Bedroom Modern Apartment
- Spacious and presented in excellent condition throughout
- Great Location Close to The River Thames, Isleworth Mainline Station and Richmond Town Centre
- Chain Free
- Popular Gated Development
- Cycle Storage
- Communal Gardens
- Southerly Aspect



SCAN HERE
FOR
PROPERTY
DETAILS

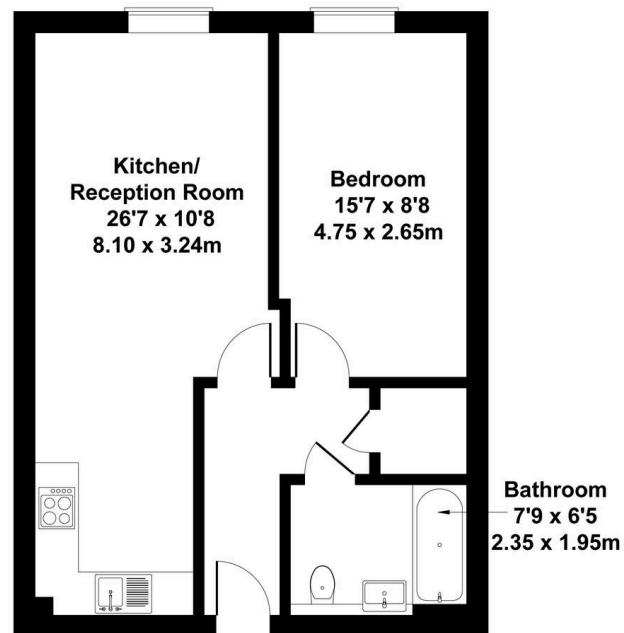


OAKHILL



Wotton House, St John's Road, TW7 6GX

Approximate Gross Internal Area
Main House 517 sq ft - 48 sq m



GROUND FLOOR

This floorplan is for guidance only and does not form part of an offer or contract.
Buyers or tenants should verify all details through inspection, searches, and surveys.
Measurements are approximate and should not be relied upon for valuation or transactions.

Produced by Plan Portal.
www.evolveLondon.co.uk

