

CHRISTOPHER HODGSON



Herne Common, Herne Bay

£255,000 Freehold



Herne Common, Herne Bay

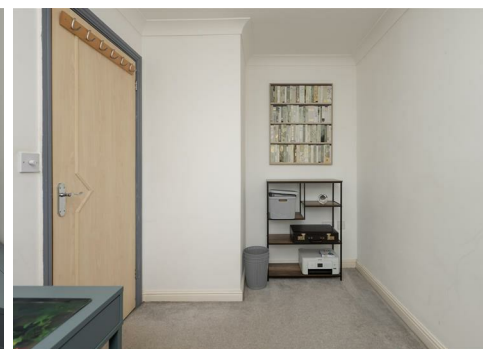
9 Falcon Close, Herne Common, Herne Bay, Kent, CT6 7LD

A contemporary terraced house forming part of the desirable Canterbury Fields development, enviably positioned within the popular village of Herne, which benefits from a local shop, post office and a popular public house. The property is within close proximity to shops and amenities, bus routes and Herne C of E Junior School, and is ideally positioned for access to Herne Bay (2 miles), Whitstable (6.4 miles) and Canterbury (10 miles).

The comfortably proportioned accommodation is arranged to provide an entrance hall, a living room with a

pair of casement doors leading to the garden, a contemporary kitchen, and a cloakroom. To the first floor, there are 2 bedrooms and a smartly fitted bathroom.

The property also benefits from a westerly aspect private courtyard garden which has been designed with ease of maintenance, and an allocated parking space. No onward chain.



LOCATION

Herne is a desirable village located approximately 1.9 miles from the popular seaside town of Herne Bay and is well served by bus routes, a post office/local store, dental surgery, C of E primary school, village hall, 14th Century St Martins Church and two public houses, including The butchers Arms, which is reputedly the smallest Free House in England. The A299 is easily accessible providing a dual carriage way link to the M2/A2 with access to the channel ports and subsequent motorway network. A bridle path links the development to scenic walking routes, accessed via Swallow Court.

Herne Bay is well served by shops, schools, bus routes and other amenities, as well as the bustling town centre and highly regarded seafront which boasts a marina as well as popular watersport facilities. There is also a mainline railway station providing fast and frequent links to London (Victoria) approximately 93 minutes. The high speed Javelin service provides access to London (St Pancras) with a journey time of approximately 78 minutes. The Cathedral City of Canterbury (approximately 7 miles distant) offers theatres, cultural and leisure amenities, as well as benefiting from excellent public and state schools. The City also boasts the facilities of a major shopping centre enjoying a range of mainstream retail outlets as well as many individual and designer shops.

ACCOMMODATION

The accommodation and approximate measurements (taken at maximum points) are:

GROUND FLOOR

- Entrance Hall
- Living Room 14'8" x 11'8" (4.48m x 3.56m)
- Kitchen 9'8" x 6'2" (2.95m x 1.88m)
- Cloakroom

FIRST FLOOR

- Bedroom 1 14'8" x 8'5" (4.48m x 2.57m)
- Bedroom 2 11'0" x 6'9" (3.36m x 2.06m)
- Bathroom

OUTSIDE

- Garden 19'7" x 16' (5.97m x 4.88m)



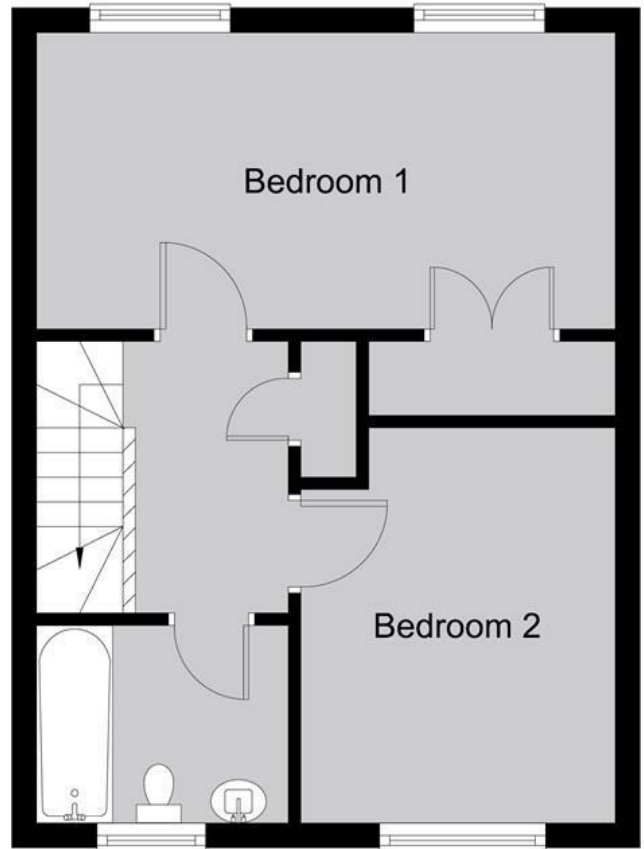
Ground Floor

Main area: approx. 30.0 sq. metres (322.5 sq. feet)



First Floor

Main area: approx. 30.0 sq. metres (322.5 sq. feet)



Main area: Approx. 60.0 sq. metres (645.0 sq. feet)

Council Tax Band C. The amount payable under tax band C for the year 2025/2026 is £2,047.33.

Christopher Hodgson Estate Agents for itself and as for the vendor or lessor (as appropriate) gives notice that: 1 These particulars are only a general outline for the guidance of intending purchasers or lessees and do not constitute in whole or in part an offer or a Contract. 2 Reasonable endeavours have been made to ensure that the information given in these particulars is materially correct but any intending purchaser or lessee should satisfy themselves by inspection, searches, enquiries and survey as to the correctness of each statement. 3 All statements in these particulars are made without responsibility on the part of Christopher Hodgson Estate Agents or the vendor or lessor. 4 No statement in these particulars is to be relied upon as a statement or representation of fact. 5 Neither Christopher Hodgson Estate Agents nor anyone in its employment or acting on its behalf has authority to make any representation or warranty in relation to this property. 6 Nothing in these particulars shall be deemed to be a statement that the property is in good repair or condition or otherwise nor that any services or facilities are in good working order. 7 Photographs may show only certain parts and aspects of the property at the time when the photographs were taken and you should rely upon actual inspection. 8 No assumption should be made in respect of parts of the property not shown in photographs. 9 Any areas, measurements or distances are only approximate. 10 Any reference to alterations or use is not intended to be a statement that any necessary planning, building regulation, listed building or any other consent has been obtained. 11 Amounts quoted are exclusive of VAT if applicable. 12 Whilst reasonable endeavours have been made to ensure the accuracy of any floor plan contained in these particulars, all measurements and areas are approximate and no responsibility is taken for any error, omission or mis-statement. This plan is for illustrative purposes only and should be used as such by any prospective purchaser. 13 Any mapping contained within these particulars is for illustrative purposes only and should be used as such by any prospective purchaser. No responsibility is taken for any error, omission or mis-statement. 14 Any computer generated images contained within these particulars are for illustrative purposes only and should be used as such by any prospective purchaser.

Energy Efficiency Rating		Current	Target
Overall Energy Efficiency Rating	A	74	79
Energy Efficiency Rating	B		
Energy Efficiency Rating	C		
Energy Efficiency Rating	D		
Energy Efficiency Rating	E		
Energy Efficiency Rating	F		
Energy Efficiency Rating	G		

England & Wales

95-97 TANKERTON ROAD, WHITSTABLE CT5 2AJ | CHRISTOPHERHODGSON.CO.UK

