



Connells

The Paddocks
Deddington Banbury

The Paddocks

Deddington Banbury OX15 0QN

for sale
£265,000



Property Description

A beautifully presented and thoughtfully designed two-bedroom home with a stunning south-facing garden and uninterrupted views across open fields, ideally located within the highly sought-after village of Deddington.

Converted only a few years ago, this charming property occupies a wonderfully peaceful position moments from the village centre, offering bright, contemporary accommodation arranged over three floors.

The ground floor features a modern L-shaped kitchen and dining room, complete with fitted appliances and ample storage.

Beyond this, the light-filled living room benefits from skylight windows that flood the space with natural light and frame views towards the garden. A useful storage/utility area completes the ground floor.

The first floor offers a comfortable second bedroom alongside a stylish family shower room, while the top floor is dedicated to a spacious master bedroom, also enhanced by skylight windows and elevated views.

Outside, the beautifully kept south-facing garden is a standout feature—private, peaceful and enjoying superb open outlooks, with a garden shed and a layout ideal for relaxing or entertaining.

To the front of the property, there is private driveway parking.

Deddington

The highly regarded village of Deddington offers a wide range of amenities including local shops, cafés, a Post Office, health and community facilities, library, restaurants, hotels and a well-used recreation ground.

The Church of St Peter and St Paul stands at the heart of the village, and a gym is located nearby on Clifton Road.

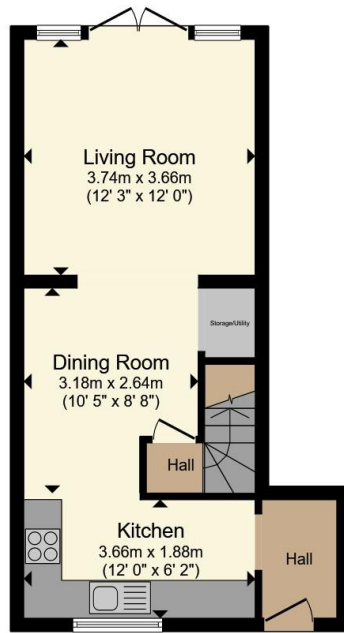
Deddington has a popular Church of England primary school, and falls within the Warriner School catchment for secondary education.

Excellent further amenities are available in Banbury and Oxford, and the village is well placed for commuting with access to the M40 (J10 & J11) and mainline railway stations at Banbury and Bicester.

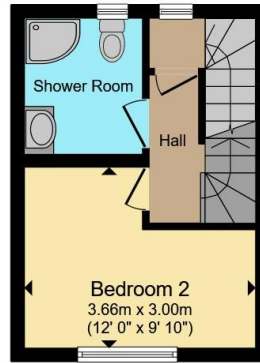




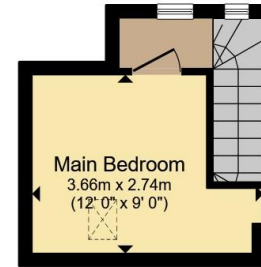




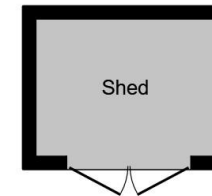
Ground Floor



First Floor



Second Floor



Outbuilding

Total floor area 73.7 m² (793 sq.ft.) approx

This floor plan is for illustrative purposes only. It is not drawn to scale. Any measurements, floor areas (including any total floor area), openings and orientation are approximate. No details are guaranteed, they cannot be relied upon for any purpose and they do not form part of any agreement. No liability is taken for any error, omission or misstatement. A party must rely upon its own inspection(s). Powered by www.propertybox.io

Connells

To view this property please contact Connells on

T 01295 268 101
E banbury@connells.co.uk

33 Bridge Street
BANBURY OX16 5PN

EPC Rating: C Council Tax
Band: C

Tenure: Freehold

view this property online connells.co.uk/Property/BAN309894



1. MONEY LAUNDERING REGULATIONS Intending purchasers will be asked to produce identification documentation at a later stage and we would ask for your co-operation in order that there will be no delay in agreeing the sale. 2. These particulars do not constitute part or all of an offer or contract. 3. The measurements indicated are supplied for guidance only and as such must be considered incorrect. Potential buyers are advised to recheck measurements before committing to any expense. 4. We have not tested any apparatus, equipment, fixtures, fittings or services and it is in the buyers interest to check the working condition of any appliances.

Connells Residential is registered in England and Wales under company number 1489613, Registered Office is Cumbria House, 16-20 Hockliffe Street, Leighton Buzzard, Bedfordshire, LU7 1GN. VAT Registration Number is 500 2481 05.

See all our properties at www.connells.co.uk | www.rightmove.co.uk | www.zoopla.co.uk

Property Ref: BAN309894 - 0003