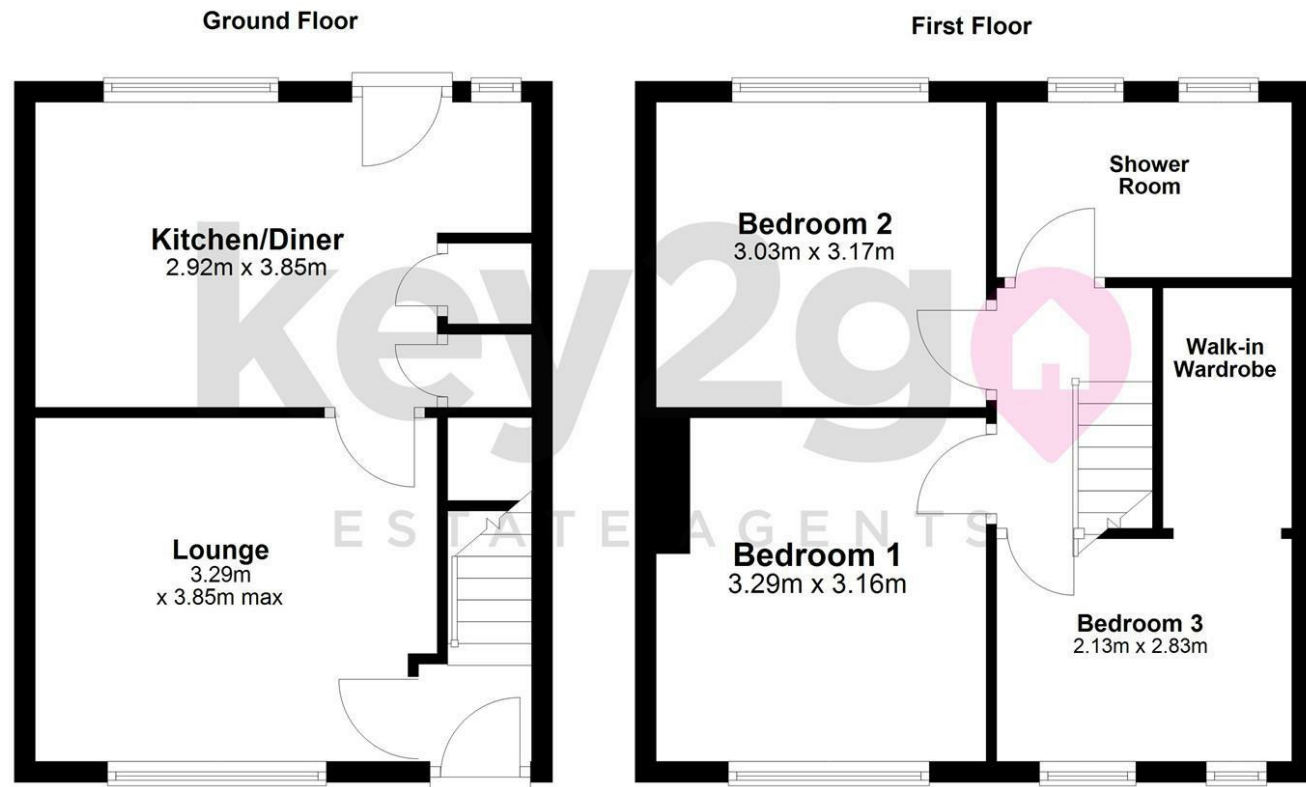
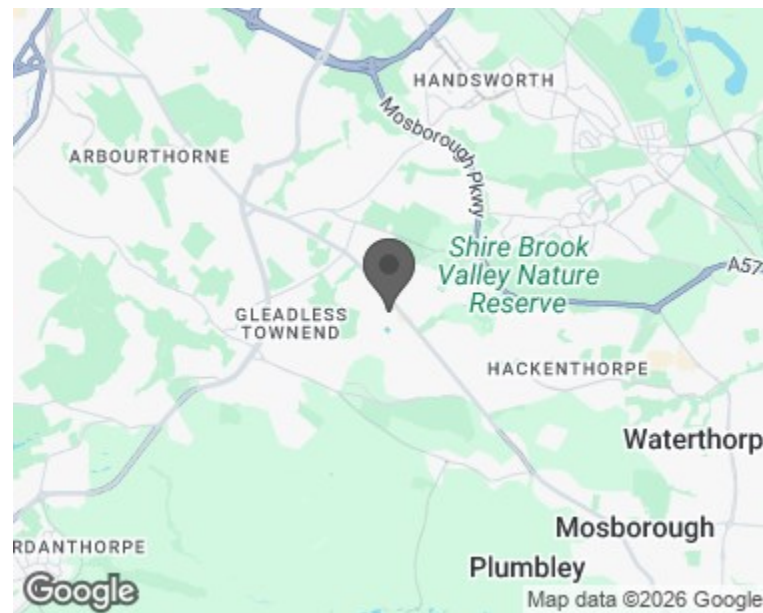


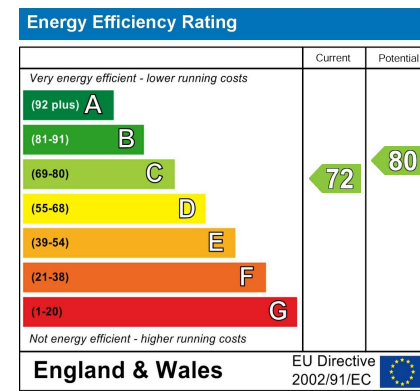
Floorplan



Area Map



Energy Efficiency Graph



15 Smalldale Road  
Sheffield, S12 4YA

£900 PCM



Viewing

Please contact our Lettings Team Office on 0114 2478819 if you wish to arrange a viewing appointment for this property or require further information.



These particulars, whilst believed to be accurate are set out as a general outline only for guidance and do not constitute any part of an offer or contract. Intending purchasers should not rely on them as statements of representation of fact, but must satisfy themselves by inspection or otherwise as to their accuracy. No person in this firm's employment has the authority to make or give any representation or warranty in respect of the property.

# 15 Smalldale Road

Sheffield, S12 4YA

£900 PCM



A unique opportunity to rent this deceptively spacious, three bedroomed terrace house located in the highly sought after village of Frecheville. Having two reception rooms and benefiting from ample built in storage space and a sizeable rear garden. Close to a wide choice of amenities, schools and public transport links!

## SUMMARY

A unique opportunity to rent this deceptively spacious, three bedroomed terrace house located in the highly sought after village of Frecheville. Having two reception rooms and benefiting from ample built in storage space and a sizeable rear garden. Close to a wide choice of amenities, schools and public transport links!

