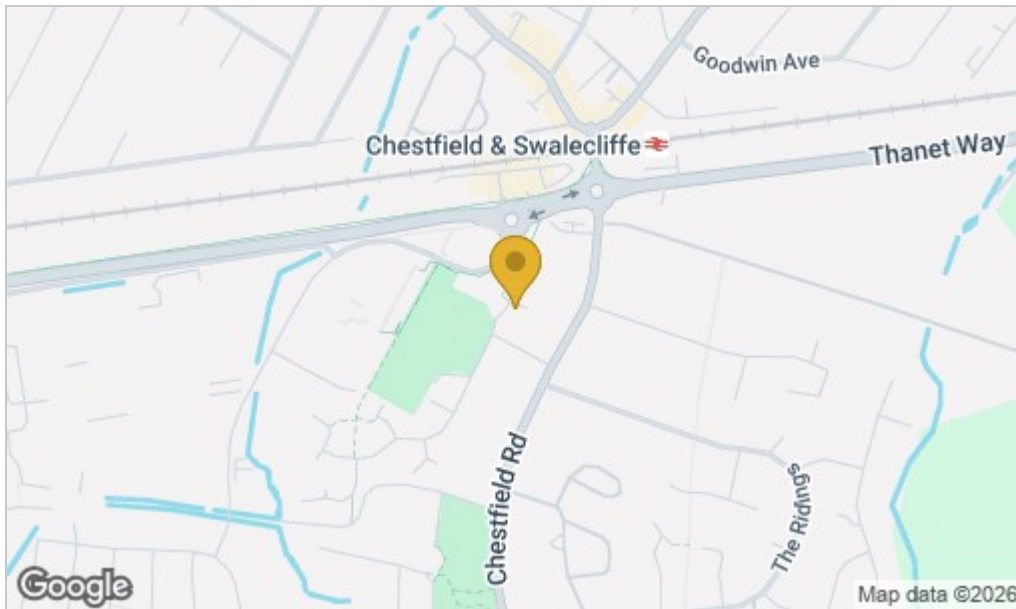




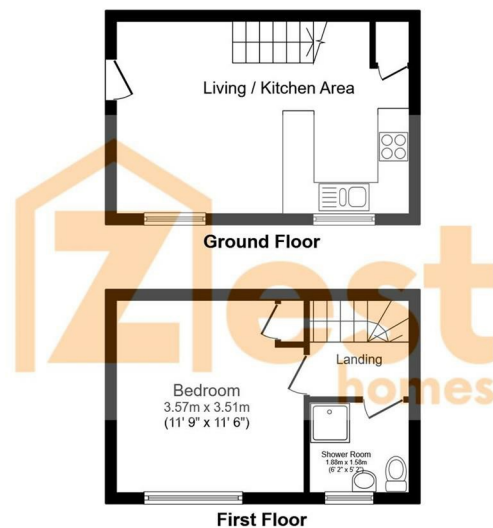
11 Lavender Close, Whitstable, CT5 3QL
£220,000

 1  1  1  C



Accommodation

- AVAILABLE NOW
- Allocated Parking Space
- Enclosed Private Garden
- Local Amenities Nearby
- Open Plan Living/Kitchen
- Quiet Cul De Sac Position
- One Bedroom
- Shower Room To First Floor



This plan is for illustration purposes only and may not be representative of the property. Plan not to scale. Powered by PropertyBox

These particulars, whilst believed to be accurate are set out as a general outline only for guidance and do not constitute any part of an offer or contract. Intending purchasers should not rely on them as statements of representation of fact, but must satisfy themselves by inspection or otherwise as to their accuracy. No person in this firm's employment has the authority to make or give any representation or warranty in respect of the property.

Viewing

Please contact our Zest Homes Sales & Lettings Office on 01227 949291 if you wish to arrange a viewing appointment for this property or require further information.

Energy Efficiency Rating		
	Current	Potential
Very energy efficient - lower running costs		
(92 plus) A		
(81-91) B		89
(69-80) C	71	
(55-68) D		
(39-54) E		
(21-38) F		
(1-20) G		
Not energy efficient - higher running costs		
England & Wales	EU Directive 2002/91/EC 