



The Barley House Norton Fitzwarren, Taunton TA4 1BX

A beautifully presented 4 double bedrooomed South facing mid-terraced stone barn conversion occupying over 2,500 sq.ft. situated in this semi-rural location overlooking surrounding countryside close to the village of Norton Fitzwarren and 4.7 miles of the centre of Taunton with 3 reception rooms, gardens to front and rear, garage and ample driveway parking. No onward chain.





Features

- Entrance Porch
- Living Room with woodburner and French doors to garden
- Dining Area
- Study
- Fitted Kitchen / Breakfast Room with granite work surfaces, Range style cooker and French doors to garden
- Utility Room
- Cloakroom
- Master Bedroom with fitted wardrobe and Ensuite Shower Room
- Bedroom 2 with fitted wardrobe and Ensuite Shower Room
- 2 further double bedrooms
- Family Bathroom with roll-top bath

- South facing garden to front and enclosed courtyard garden to rear with vegetable garden
- Garage and ample driveway parking

- Gas central heating
- Double glazing
- Exposed beams
- Private drainage

- Management charge £824 pa

- Council tax band E

- What3words:
///startles.butter.ideal







The Barley House is situated in this semi-rural location overlooking surrounding countryside.

The near-by village of Norton Fitzwarren offers local amenities such as doctors, vets, small village primary school and a post office.

Taunton the County town of Somerset is located 4.7 miles away and is a bustling, forward-looking town with excellent amenities, a good selection of independent and high street shops, distinctive restaurants, cafés, a wealth of history and sporting facilities including the County Cricket Ground.

Taunton benefits from a main line railway station linking to London Paddington in less than 2 hours and excellent communications for the M5 motorway at Junction 25.

For rural pursuits, the Brendon, Blackdown and Quantock Hills lie within easy reach and further West, Exmoor National Park provides excellent walking, riding and cycling.



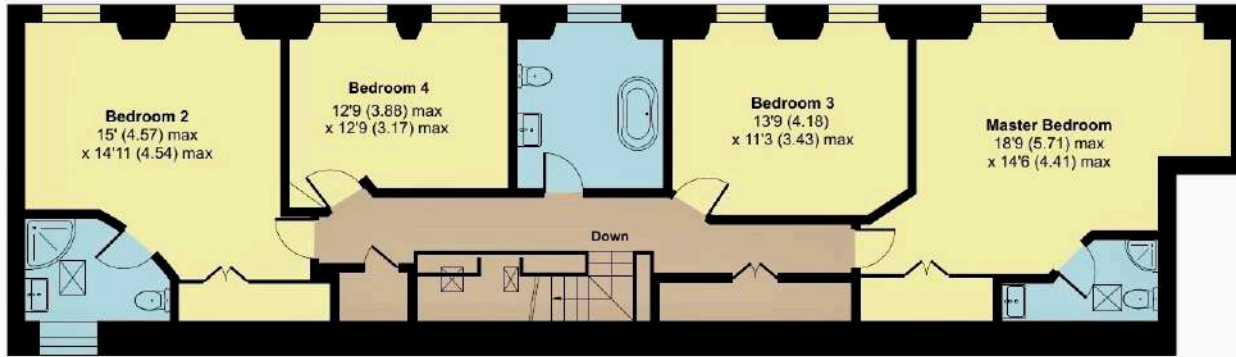
The Barley House, Harnham Court, Norton Fitzwarren, Taunton, TA4 1BX

Approximate Area = 2318 sq ft / 215.3 sq m

Garage = 197 sq ft / 18.3 sq m

Total = 2515 sq ft / 233.6 sq m

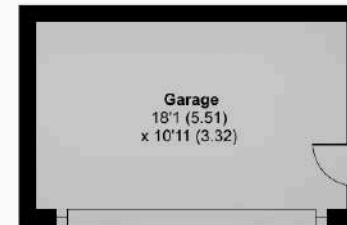
For identification only - Not to scale



FIRST FLOOR



GROUND FLOOR



Viewing strictly through the selling agents:

Robert Cooney

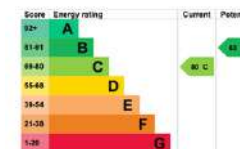
Corporation Street, Taunton,
Somerset TA1 4AW

Telephone 01823 230 230

E-mail taunton@robertcooney.co.uk

Website robertcooney.co.uk

Floor plan produced in accordance with RICS Property Measurement 2nd Edition, Incorporating International Property Measurement Standards (IPMS2 Residential). © nchecom 2026. Produced for Robert Cooney. REF: 1425897



For clarification, we wish to inform prospective purchasers that: these particulars are set out as a general outline only for the guidance of intended purchasers, and do not constitute, nor constitute part of, an offer or contract; all descriptions, dimensions, references to condition and necessary permission for use and occupation, and other details, are given without responsibility and any intending purchasers should not rely on them as statements or representation of fact, but must satisfy themselves by inspection or otherwise as to the correctness of each of them; no person in the employment of Robert Cooney has any authority to make or give any representation or warranty whatever in relation to this property; we have not carried out a detailed survey nor tested the services, appliances and specific fittings.

**robert
cooney**

