



Wat Tyler Road, SE3

£475,000

A beautifully presented two double bedroom first floor apartment set within a sought-after gated development overlooking the heath. Finished to an excellent standard throughout, the property offers bright, well-balanced accommodation and is ideally positioned for those looking for peaceful surroundings while remaining well connected.

Wat Tyler Road is a quiet tree lined road, ideally located for easy access to the excellent transport links at Lewisham Station serving Canary Wharf and London Bridge. Blackheath Village is a pleasant stroll across the heath offering an array of independent shops, cafés and pubs. The open spaces of Greenwich Park are also within easy reach.

Features

- First Floor Flat
- Gated Development
- Share Of Freehold
- Private Parking
- Two Double Bedrooms
- Beautiful Condition
- Throughout



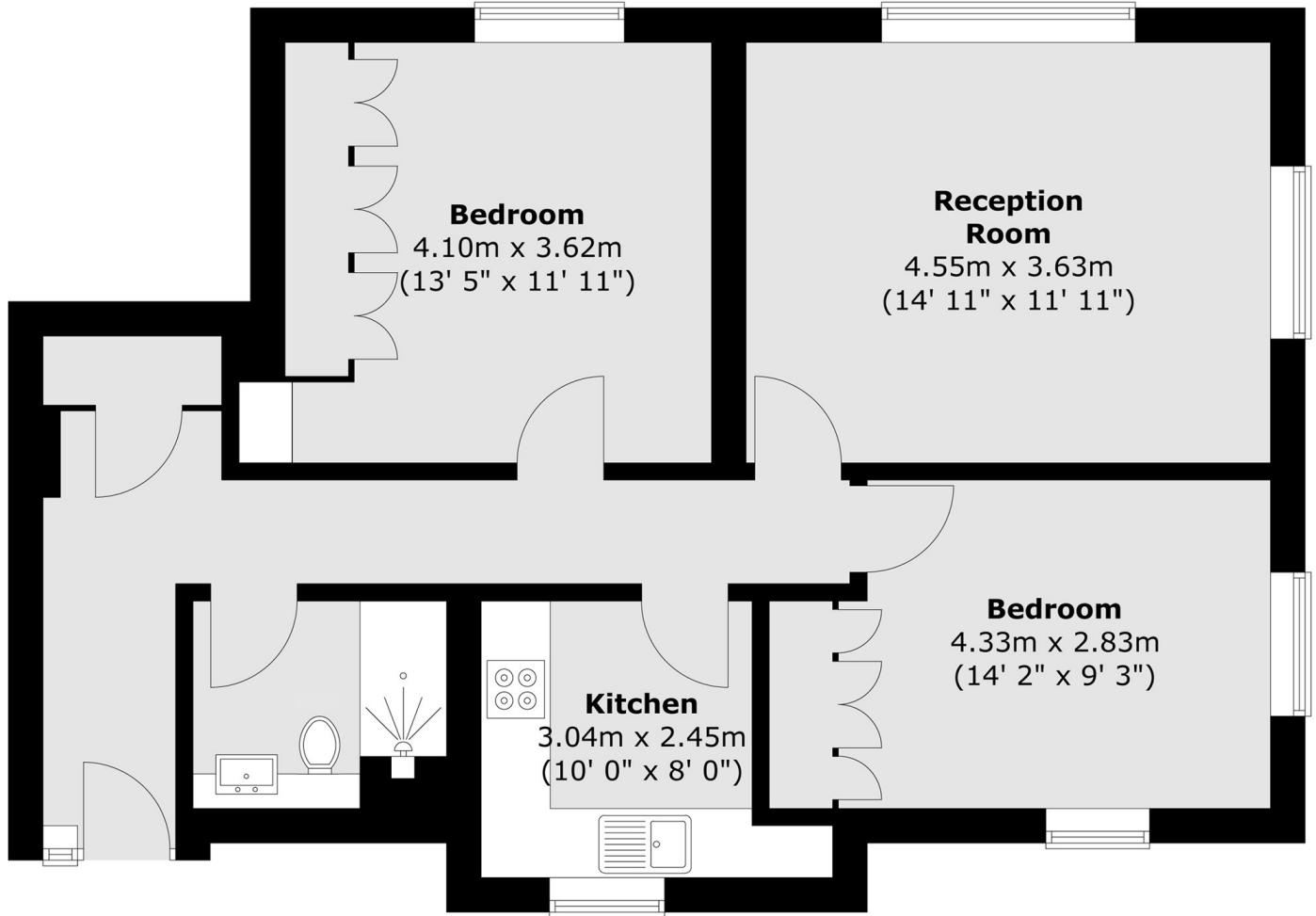
Wat Tyler Road, SE3

The flat is entered via a welcoming hallway with excellent built-in storage. The spacious reception room is flooded with natural light thanks to dual aspect windows and enjoys stunning open views across the heath. The property has been tastefully decorated throughout and is in superb condition.

There are two generous double bedrooms, both beautifully presented, alongside a well-appointed bathroom and a separate modern kitchen. The apartment further benefits from having a share of freehold tenure.



Wat Tyler Road, London, SE3



Total area (approx.) : 67.6 sq. m (728 sq. ft)