



### **Staines Road, Hounslow, TW3 3JS**

**£1,995 PCM**

Town centre location with access to Hounslow Central tube and mainline stations. This property is a three bedroom third floor apartment comprising three double bedrooms, lounge, kitchen, family bathroom and ensuite to master bedroom. The property also benefits from double glazed windows, central heating, communal roof terrace, video entry telephone system and CCTV security to communal areas. Lift access. Offered on a furnished basis, available from 7th March

A partner of  
**The Guild Of Professional Estate Agents**  
with a network of over 700 independent estate agents

Associated Office: 121 Park Lane, Mayfair, London W1K 7AG t 020 7318 7075

**Lounge**



**Bedroom One**



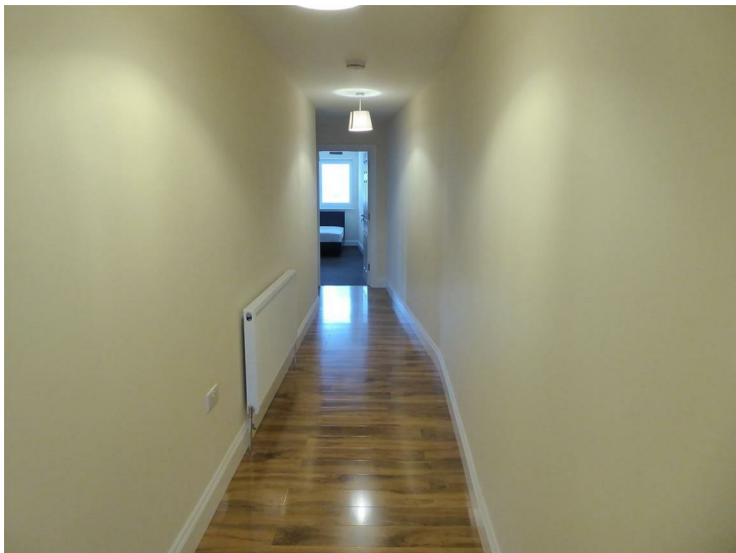
**Kitchen**



**Bedroom Two**



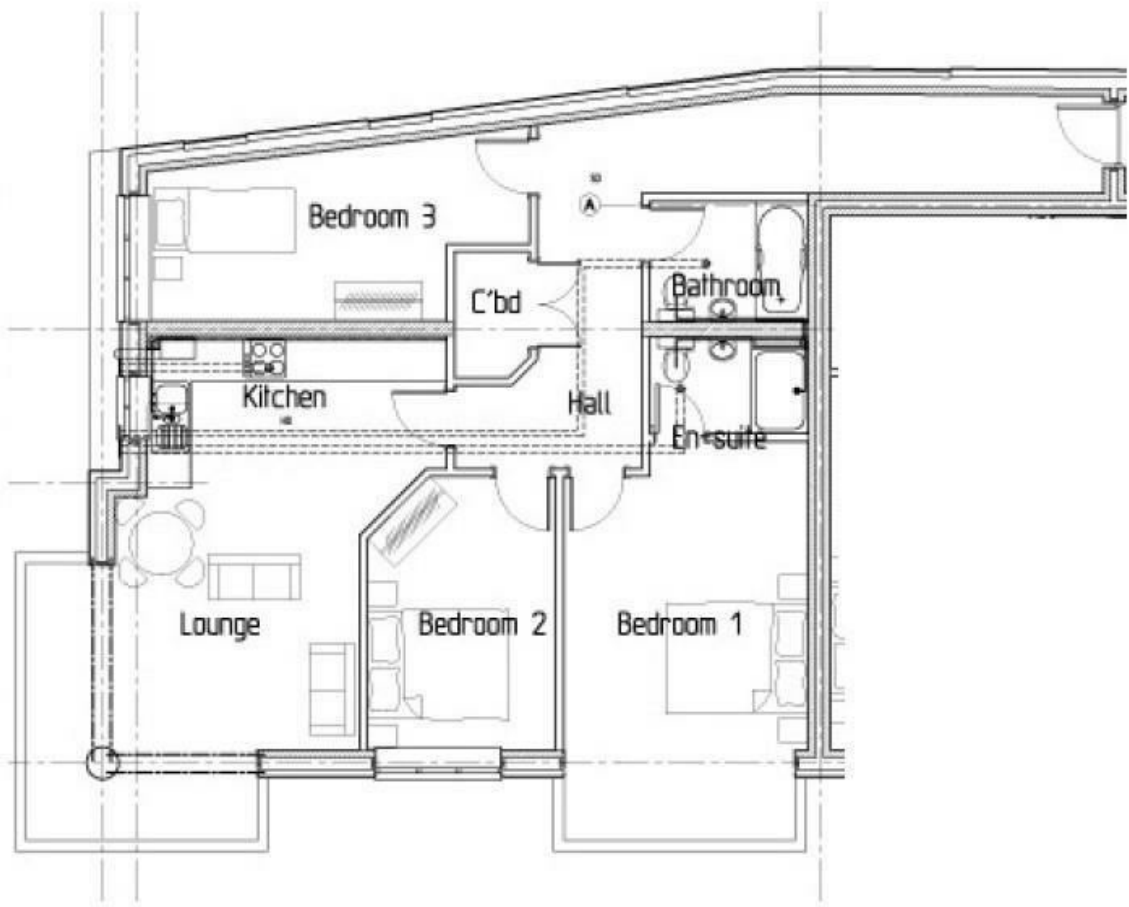
**Hallway**



**Bedroom Three**



**En-Suite****Bathroom****Communal Roof Terrace**



Energy Efficiency Rating		Current	Potential
Very energy efficient - lower running costs			
(92 plus) <b>A</b>			
(81-91) <b>B</b>		<b>86</b>	<b>86</b>
(69-80) <b>C</b>			
(55-68) <b>D</b>			
(39-54) <b>E</b>			
(21-38) <b>F</b>			
(1-20) <b>G</b>			
Not energy efficient - higher running costs			
<b>England &amp; Wales</b>		EU Directive 2002/91/EC	
Environmental Impact (CO <sub>2</sub> ) Rating		Current	Potential
Very environmentally friendly - lower CO <sub>2</sub> emissions			
(92 plus) <b>A</b>			
(81-91) <b>B</b>		<b>87</b>	<b>87</b>
(69-80) <b>C</b>			
(55-68) <b>D</b>			
(39-54) <b>E</b>			
(21-38) <b>F</b>			
(1-20) <b>G</b>			
Not environmentally friendly - higher CO <sub>2</sub> emissions			
<b>England &amp; Wales</b>		EU Directive 2002/91/EC	

A partner of  
**The Guild Of Professional Estate Agents**  
 with a network of over 700 independent estate agents

Associated Office: 121 Park Lane, Mayfair, London W1K 7AG t 020 7318 7075