



Connells

Dartmouth Drive
Broughton Milton Keynes



Property Description

Set within the sought after Broughton area of Milton Keynes, this beautifully presented two bedroom shared ownership apartment offers stylish, low maintenance living. The bright open plan lounge and kitchen area that creates an elegant, airy space, complemented by two generous bedrooms - with the principal bedroom featuring a private balcony - and a contemporary bathroom.

With allocated parking, secure entry and well kept communal areas, this home combines comfort with convenience. Perfectly positioned for easy access to local amenities, parks, schools, the M1 and Central Milton Keynes, it's an ideal first step onto the property ladder.

Premium location, effortless living - early viewing recommended.

Kitchen / Lounge

A bright, open-plan kitchen and lounge area designed for comfort and practicality, featuring four double-glazed windows that bring in plenty of natural light while improving warmth and energy efficiency.

Bedroom One

A well-proportioned main bedroom featuring double-glazed windows for improved warmth and reduced noise, a radiator for consistent heating, and a private balcony that adds a standout feature to the room by offering fresh air and an attractive outdoor aspect.



Bedroom Two

A comfortable secondary bedroom featuring double-glazed windows that help keep the space warm and quiet, along with a radiator providing consistent heating throughout the year. The room's simple layout makes it versatile for use as a guest room, child's room or home office.

Bathroom

A clean and functional bathroom fitted with a bath and overhead shower, offering flexibility for both quick showers and longer soaks. An extractor fan improves ventilation. The room also includes a WC, wash-hand basin, and a radiator to keep the space warm and comfortable.

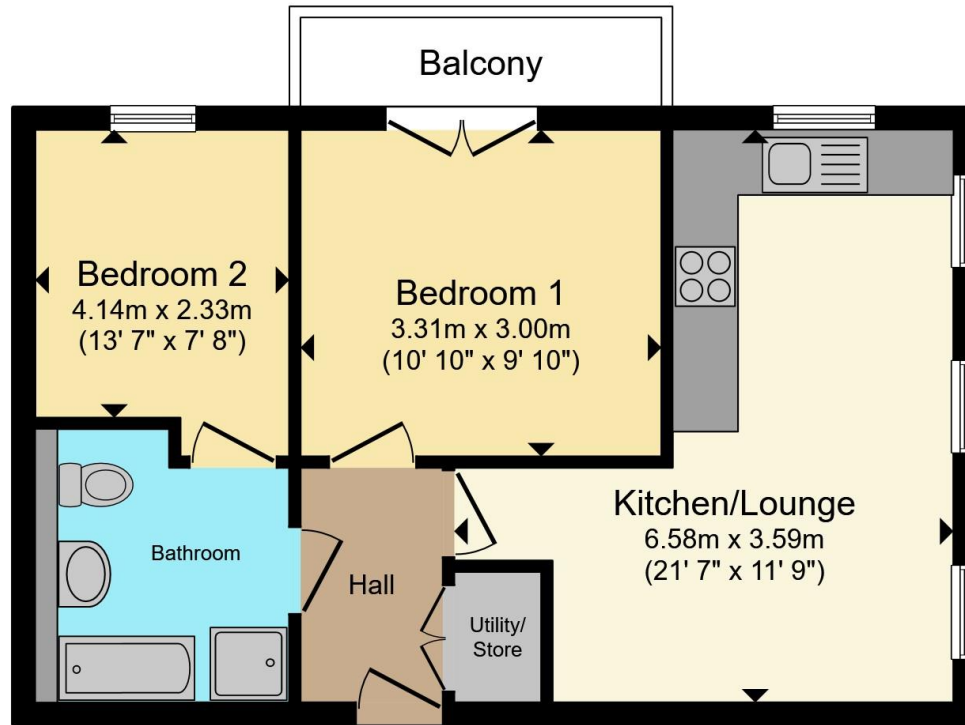
Parking

A convenient setup offering one allocated parking space along with access to visitor parking, providing both guaranteed daily parking and flexibility for guests.

Agents Note

The Land Registry title has yet to be updated with the Vendor's details. Please ask the branch for more details.





Total floor area 44.3 m² (476 sq.ft.) approx

This floor plan is for illustrative purposes only. It is not drawn to scale. Any measurements, floor areas (including any total floor area), openings and orientation are approximate. No details are guaranteed, they cannot be relied upon for any purpose and they do not form part of any agreement. No liability is taken for any error, omission or misstatement. A party must rely upon its own inspection(s). Powered by www.propertybox.io

Connells



To view this property please contact Connells on

T 01908 691606

E walnuttree@connells.co.uk

26A Fyfield Barrow The Walnut Tree Local Centre Walnut Tree

EPC Rating: B Council Tax Band: B

Service Charge: 106.42 Ground Rent: Ask Agent

Tenure: Leasehold

view this property online connells.co.uk/Property/WNT308136

This is a Leasehold property with details as follows; Term of Lease 999 years from 26 Jan 2024. Should you require further information please contact the branch. Please Note additional fees could be incurred for items such as Leasehold packs.



1. MONEY LAUNDERING REGULATIONS Intending purchasers will be asked to produce identification documentation at a later stage and we would ask for your co-operation in order that there will be no delay in agreeing the sale. 2. These particulars do not constitute part or all of an offer or contract. 3. The measurements indicated are supplied for guidance only and as such must be considered incorrect. Potential buyers are advised to recheck measurements before committing to any expense. 4. We have not tested any apparatus, equipment, fixtures, fittings or services and it is in the buyers interest to check the working condition of any appliances.

Connells Residential is registered in England and Wales under company number 1489613, Registered Office is Cumbria House, 16-20 Hockliffe Street, Leighton Buzzard, Bedfordshire, LU7 1GN. VAT Registration Number is 500 2481 05.

See all our properties at www.connells.co.uk | www.rightmove.co.uk | www.zoopla.co.uk

Property Ref: WNT308136 - 0010