







## Flat 7

Wrekin House Old Vicarage Lane, Northwich

Bright top floor apartment with two bedrooms, a short walk from Hartford village.

Council Tax band: A

Tenure: Leasehold

EPC Energy Efficiency Rating: D

EPC Environmental Impact Rating: D

- Top Floor Apartment
- Two Bedrooms
- Open Plan Lounge Diner
- Bathroom
- Hallway
- Allocated Parking
- Short Walk to Hartford Village
- Viewings Essential!

**Hallway**

Connecting to all rooms.

**Lounge Diner**

Spacious, with incredible views.

**Kitchen**

Fitted with a range of wall, drawer and base units with worksurfaces above.

**Bedroom One**

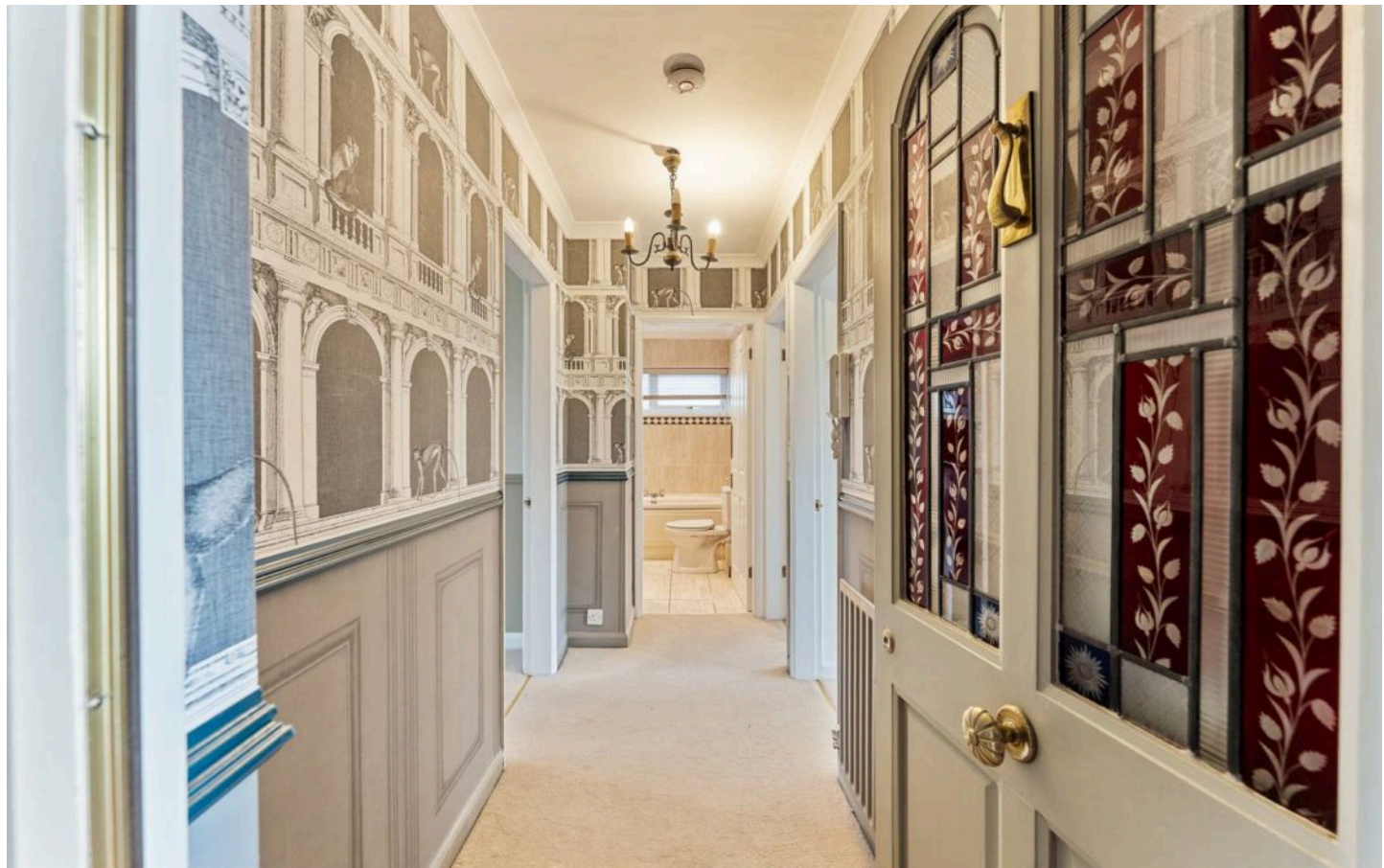
With views outside.

**Bedroom Two**

With storage cupboard.

**Bathroom**

With bathtub, shower cubicle, Low Level WC, Hand wash basin and vanity unit.





**Hallway**

Connecting to all rooms.

**Lounge Diner**

Spacious, with incredible views.

**Kitchen**

Fitted with a range of wall, drawer and base units with worksurfaces above.

**Bedroom One**

With views outside.

**Bedroom Two**

With storage cupboard.

**Bathroom**

With bathtub, shower cubicle, Low Level WC, Hand wash basin and vanity unit.









Flat 6, Wrekin House

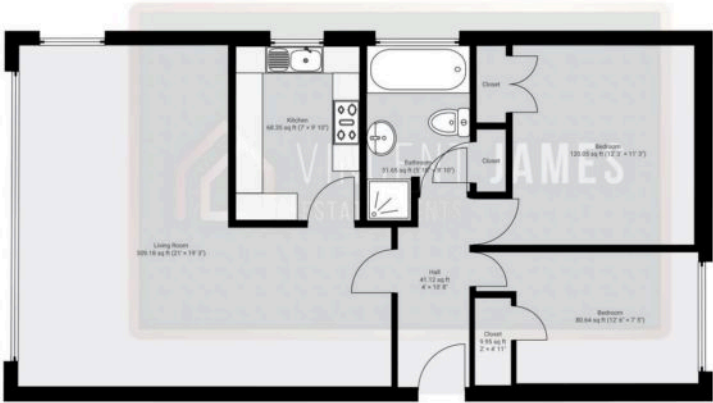
DETAILS  
Total area: 693.38 sq ft  
Living area: 693.38 sq ft  
Floors: 1  
Rooms: 9

THIS FLOORPLAN IS PROVIDED WITHOUT WARRANTY OF ANY KIND. VINCENT JAMES ESTATE AGENCY DISCLAIMS ANY WARRANTY INCLUDING, WITHOUT LIMITATION, SATISFACTORY QUALITY OR ACCURACY OF DIMENSIONS.



▼ Ground Floor

TOTAL AREA: 693.38 sq ft • LIVING AREA: 693.38 sq ft • ROOMS: 9







## Vincent James Estate Agents

87 Witton Street, Northwich – CW9 5DR

01606663939 • [hello@vincentjamesestateagents.co.uk](mailto:hello@vincentjamesestateagents.co.uk) • [www.vincentjamesestateagents.co.uk/](http://www.vincentjamesestateagents.co.uk/)