



**Connells**

April Cottage Bulford Road  
Durrington SALISBURY



## Property Description

A beautifully refurbished, high specification cottage offering a WOW FACTOR interior all set in a non estate location with local amenities only a short walk away. One look at the photos will give an idea of the quality of finish this property has to offer. The A303 and Salisbury are also just minutes away making the property also ideal for the business commuter. No Onward Chain..

### Entrance Hall

Stable door, wall light.

### Lounge

Fireplace with log burner, fitted shelving, stairs to first floor landing, attractive aspect to front looking over cottage garden, downlighters.

### Kitchen

Comprising a single drainer sink unit, range of stylish wall and base units with built in appliances, built in oven, inset hob unit with concealed hood over, white oak effect floor, metro tiling, access to dining room/study, access to luxury shower room, rear aspect..

### Dining Room/ Study

Built in cupboard, double aspect to rear and side and door to side.

### Shower Room

Comprising a double shower cubicle with shower unit and glass screen, wash hand basin and WC, tiled walls, heated towel rail.

### Landing

### Bedroom One

Front aspect

### Bedroom Two

Front aspect

### Cloakroom

Comprising a wash hand basin set in vanity unit and WC with concealed cistern.

### Outside

### Front Garden

Laid to lawn with mature borders and small trees, the front garden offers a peaceful and suprisingly private area to relax in. A gate leads to the side.

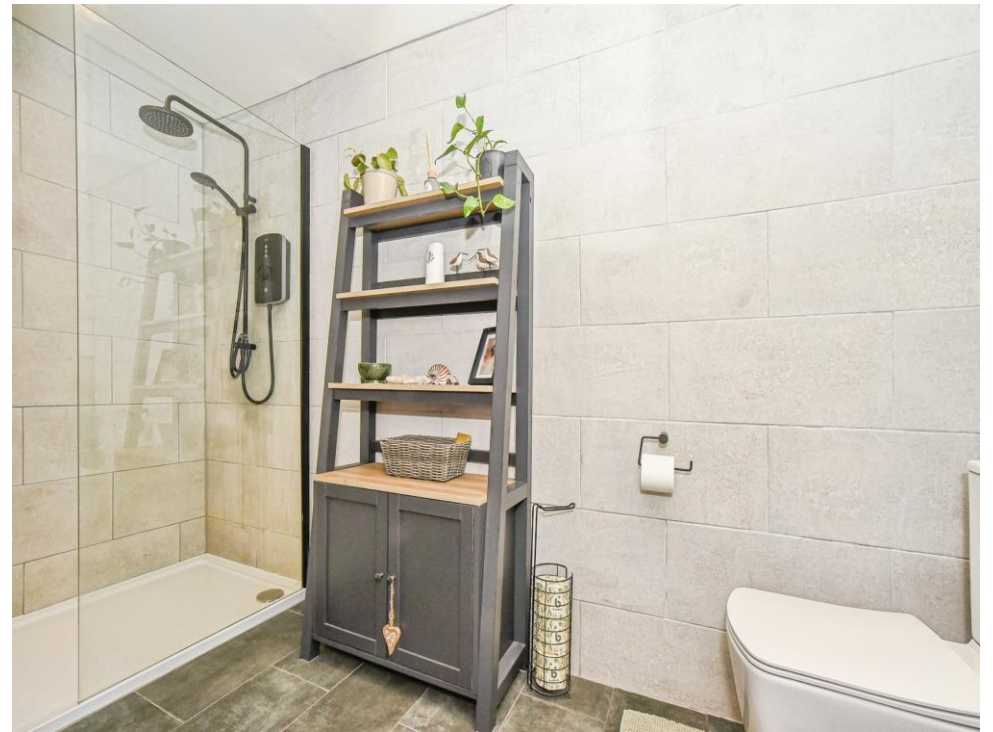
### Agent's Note

There is no rear garden to this lovely cottage.

## Parking

For two cars.

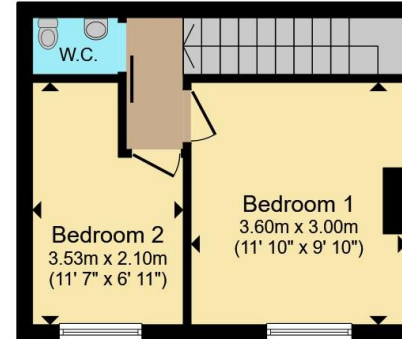








**Ground Floor**



**First Floor**

Total floor area 73.7 m<sup>2</sup> (793 sq.ft.) approx

This floor plan is for illustrative purposes only. It is not drawn to scale. Any measurements, floor areas (including any total floor area), openings and orientation are approximate. No details are guaranteed, they cannot be relied upon for any purpose and they do not form part of any agreement. No liability is taken for any error, omission or misstatement. A party must rely upon its own inspection(s). Powered by [www.propertybox.io](http://www.propertybox.io)



To view this property please contact Connells on

**T 01980 622 662**  
**E [amesbury@connells.co.uk](mailto:amesbury@connells.co.uk)**

Unit 3 23 Salisbury Street AMESBURY  
SALISBURY SP4 7AW

EPC Rating: D Council Tax  
Band: B

Tenure: Freehold

**view this property online [connells.co.uk/Property/ABY308571](http://connells.co.uk/Property/ABY308571)**



1. MONEY LAUNDERING REGULATIONS Intending purchasers will be asked to produce identification documentation at a later stage and we would ask for your co-operation in order that there will be no delay in agreeing the sale. 2. These particulars do not constitute part or all of an offer or contract. 3. The measurements indicated are supplied for guidance only and as such must be considered incorrect. Potential buyers are advised to recheck measurements before committing to any expense. 4. We have not tested any apparatus, equipment, fixtures, fittings or services and it is in the buyers interest to check the working condition of any appliances.

Connells Residential is registered in England and Wales under company number 1489613, Registered Office is Cumbria House, 16-20 Hockliffe Street, Leighton Buzzard, Bedfordshire, LU7 1GN. VAT Registration Number is 500 2481 05.

**See all our properties at [www.connells.co.uk](http://www.connells.co.uk) | [www.rightmove.co.uk](http://www.rightmove.co.uk) | [www.zoopla.co.uk](http://www.zoopla.co.uk)**

Property Ref: ABY308571 - 0003