



COUNTRY  
HOLMES

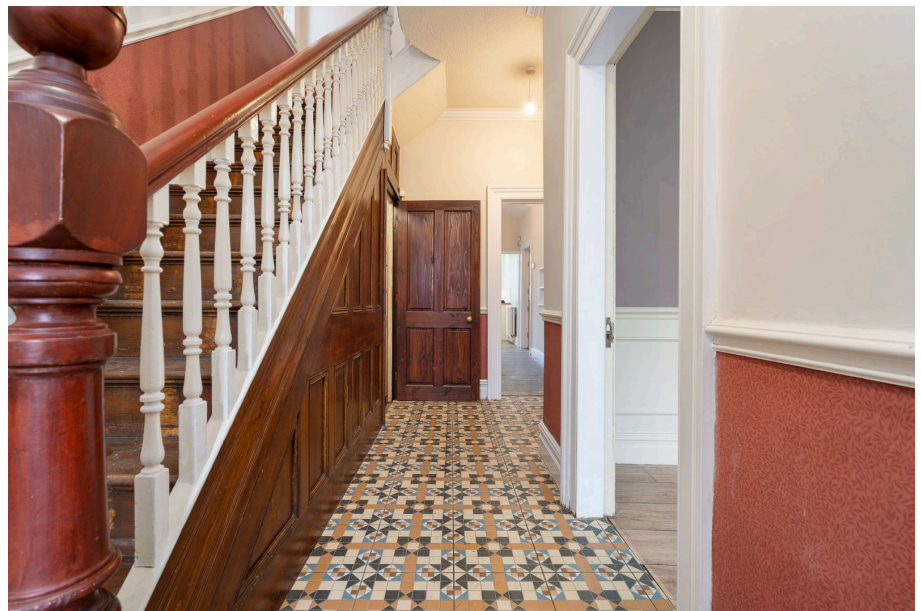
# Bowden Lane, Marple

Guide Price £525,000

🛏 6 🚿 2 🛋 3



- SIX BEDROOM substantial period home
- Three spacious and versatile reception rooms
- Walking distance to Marple centre
- Cellar with four chambers
- Offered for sale with NO ONWARD CHAIN
- Accommodation arranged over multiple floors
- Excellent transport links nearby



Braemar is a substantial and characterful six-bedroom period residence is offered to the market with no onward chain, presenting an exciting opportunity to acquire a truly impressive home in a prime central location. Brimming with original features typical of it's Edwardian era, the property showcases high ceilings, generous room proportions, panelling, dado rails and elegant decorative cornicing throughout.



Energy Efficiency Rating		
	Current	Potential
<i>Very energy efficient - lower running costs</i>		
(92 plus) <b>A</b>		
(81-91) <b>B</b>		<b>81</b>
(69-80) <b>C</b>		
(55-68) <b>D</b>	<b>66</b>	
(39-54) <b>E</b>		
(21-38) <b>F</b>		
(1-20) <b>G</b>		
<i>Not energy efficient - higher running costs</i>		
<b>England &amp; Wales</b>	EU Directive 2002/91/EC	