



Guide Price

£240,000

Freehold

2x  1x  1x 

**Terrace Road, Elvington,
Dover, Kent, CT15**

OVER 60?

Secure this property
for up to **59% less!**

Wards
Helping you move forwards



Main features

- Plenty of parking on driveway and communal parking to the rear
- Beautifully presented throughout
- Ideal property for first time buyers or investment
- Excellent transport links
- Quiet village location with great access to Canterbury

Accommodation

GROUND FLOOR

- Entrance Hall
- Kitchen : 15'8 x 7'8 (4.78m x 2.34m)
- Lounge : 13'9 x 10'3 (4.19m x 3.13m)
- Downstairs Cloakroom

FIRST FLOOR

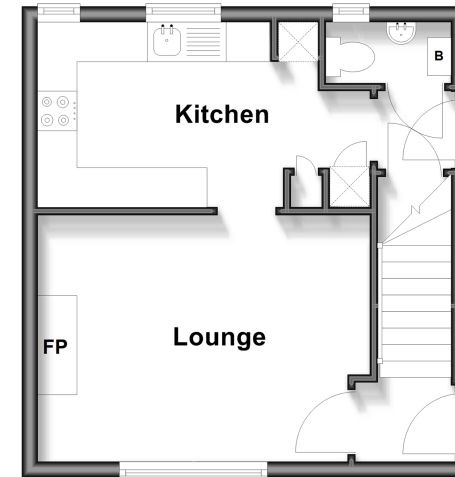
- Landing
- Bedroom 2 : 10'6 x 7'10 (3.20m x 2.39m)
- Bedroom 1 : 17'3 x 10'5 (5.26m x 3.18m)
- Bathroom

OUTSIDE

- Front Garden
- Rear Garden
- Workshop/Outbuilding
- Driveway Parking
- Communal Parking To The Rear

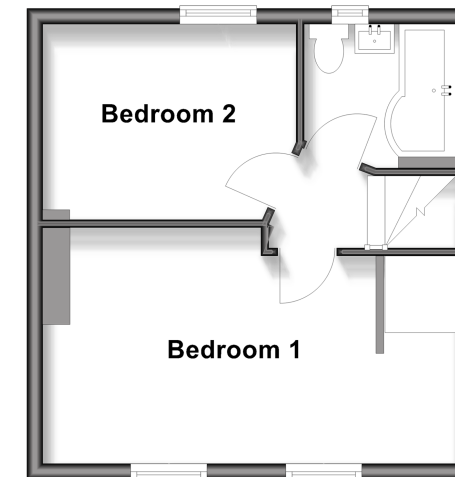
Ground Floor

Approx. 29.1 sq. metres (313.2 sq. feet)



First Floor

Approx. 29.1 sq. metres (313.2 sq. feet)



Call Dover - 01304 214876 ■ wardsof Kent.co.uk

- Legal advice should be taken to verify fixtures/fittings, planning, alterations and/or lease details
- Appliances & services are untested, dimensions are approximate and floor plans are not to scale
- Through a Homewise Home For Life Plan people aged 60+ can secure this property for up to 50% less, by purchasing a Lifetime Lease



10736154/20251210/TE/CDH