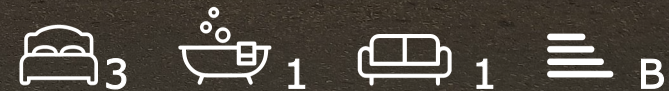




92 Elizabeth Way
Cambridge, CB4 1AY

Guide price **£595,000**



92 Elizabeth Way

Cambridge, CB4 1AY

- Milton Road and Chesterton catchment
- EPC rating B
- No chain

A modern, detached, three-bedroom house with no chain, front and rear gardens, and in catchment for Milton Road Primary and Chesterton Community College.

This three-story detached house has been carefully designed to offer open-plan living, with three double bedrooms.

The hallway has an understairs storage and a cloakroom with a WC. The dual-aspect living room includes sliding doors to the rear garden. The kitchen area is well-appointed and includes integrated appliances and a breakfast bar.

On the first floor, there are two bedrooms, both of which are double rooms, and one has a square bay window to the front aspect. The shower room is well-appointed and has a good-sized shower, a concealed cistern WC and a vanity basin, and attractive wall and floor tiling.

On the second floor, the landing has a roof light and the main bedroom has a vaulted ceiling, a





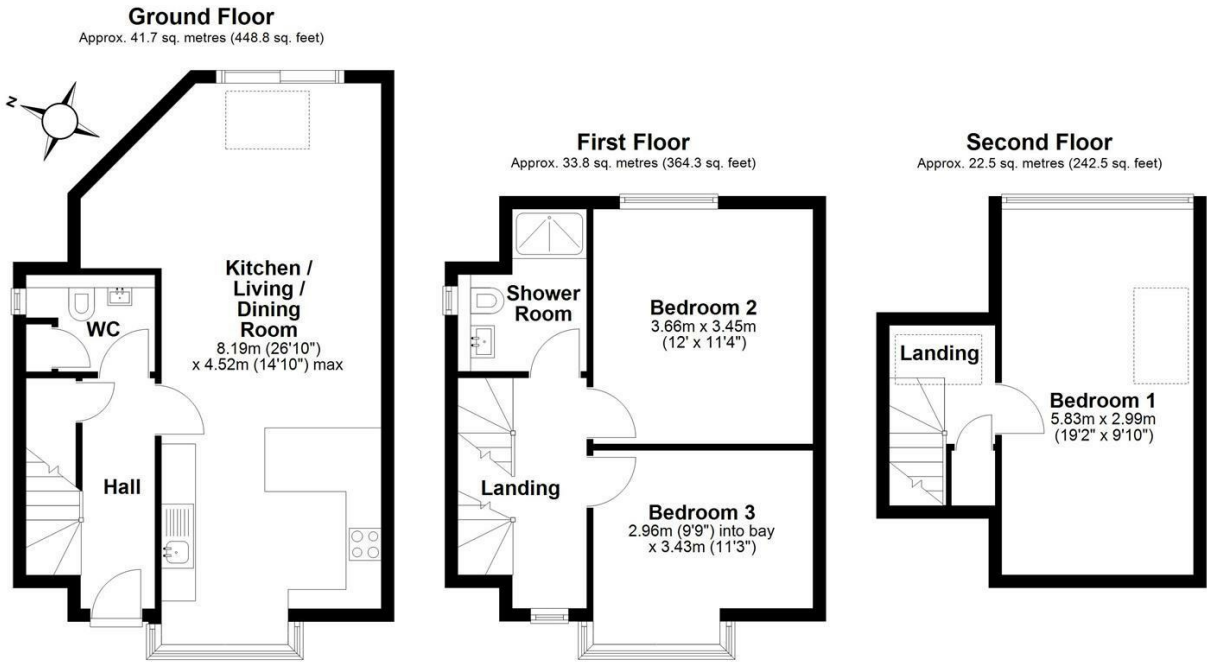
large window to the rear aspect and a Velux roof light; there is also eaves storage space.

The house has double glazing and gas central heating.

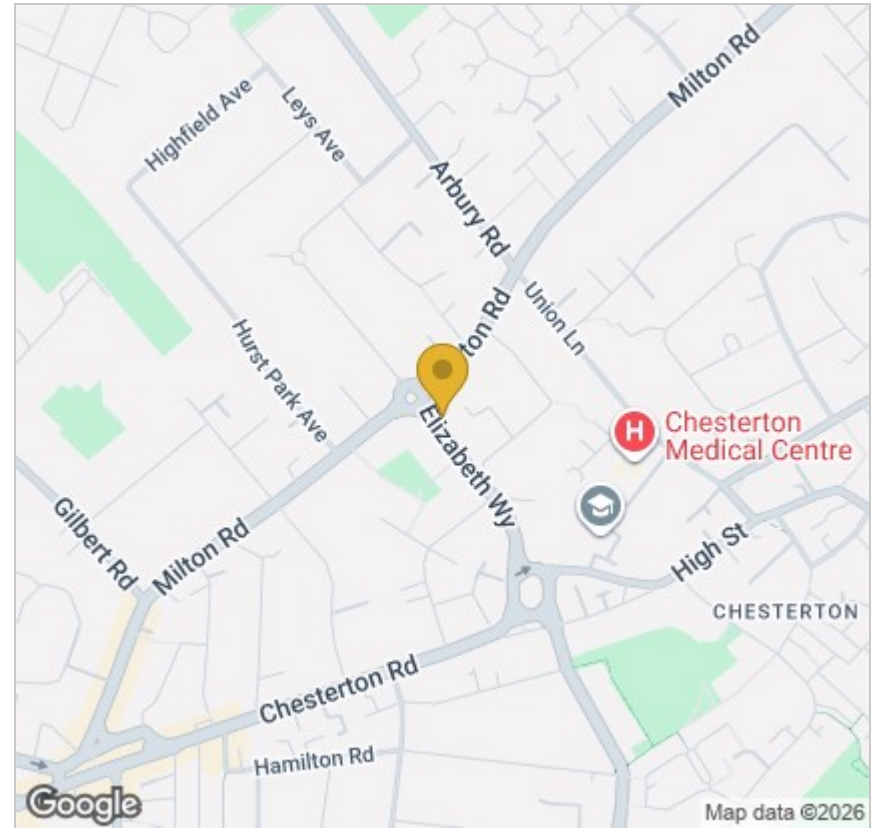
Outside, at the front, there is a garden which is paved and provides plenty of space for bikes etc. Side access leads to the rear garden, which is lawned, has a patio area and a covered bin/bike store.

What3words: ///they.solve.dark

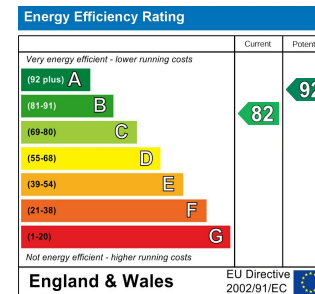




Total area: approx. 98.1 sq. metres (1055.6 sq. feet)



Energy Efficiency Graph



Tenure: Freehold
Council tax band: D

These particulars, whilst believed to be accurate, are set out as a general outline only for guidance and do not constitute any part of an offer or contract. Intending purchasers should not rely on them as statements of representation of fact, but must satisfy themselves by inspection or otherwise as to their accuracy. No person in this firm's employment has the authority to make or give any representation or warranty in respect of the property.