



Providence Square, SE1 £400,000

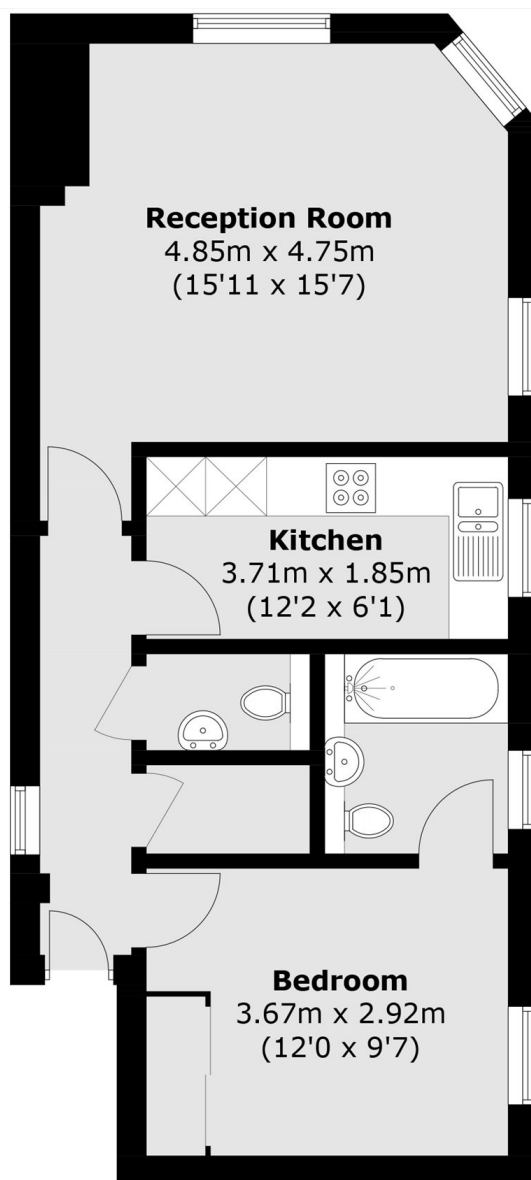
Situated in this extremely sought after gated development, this immaculately presented one double bedrooms flat has a large living space, separate kitchen, modern bathroom, residents' gym and concierge.

Providence Square is located only 0.4 miles from Bermondsey station and 0.7 miles from London Bridge station. A wide range of restaurants, cafés, artisan delis and trendy food markets are moments away.

Features

- One Double Bedroom
- Chain Free
- Long Lease
- Gated Development
- Japanese Water Gardens
- Concierge And Gym Facilities

Providence Square, London, SE1



Ground Floor

Total area (approx.): 51.2 sq. m (551.1 sq. ft)