



Grosvenor Square, W1K

£9,970 Per calendar month

Dexters



Grosvenor Square, W1K

This bright and spacious lateral apartment is situated on the second floor of a period building with lift and porter located on this prestigious Mayfair Square. The apartment is newly redecorated and benefits from air conditioning, 24hr porter, spacious open-plan reception room and wooden flooring throughout.

The entrance hall leads into an impressive reception room extending to over 32 feet in length and perfect for both dining and entertaining and with high ceilings and wide windows drawing in excellent natural light.

The open-plan kitchen is fitted with contemporary cabinetry and integrated appliances, allowing the room to function as a single, cohesive living space.

The spacious principal bedroom includes built-in storage and a well-appointed en suite bathroom finished in stone. A second double bedroom is served by a separate family bathroom, making the layout equally well suited to guests or home working.

Grosvenor Square is one of the most prestigious addresses in London, located in the heart of Mayfair just moments from well renowned restaurants such as Scott's and exclusive private members clubs such as Annabel's.

Features

Two Large Double Bedrooms

Two Luxury Bathrooms

Lateral

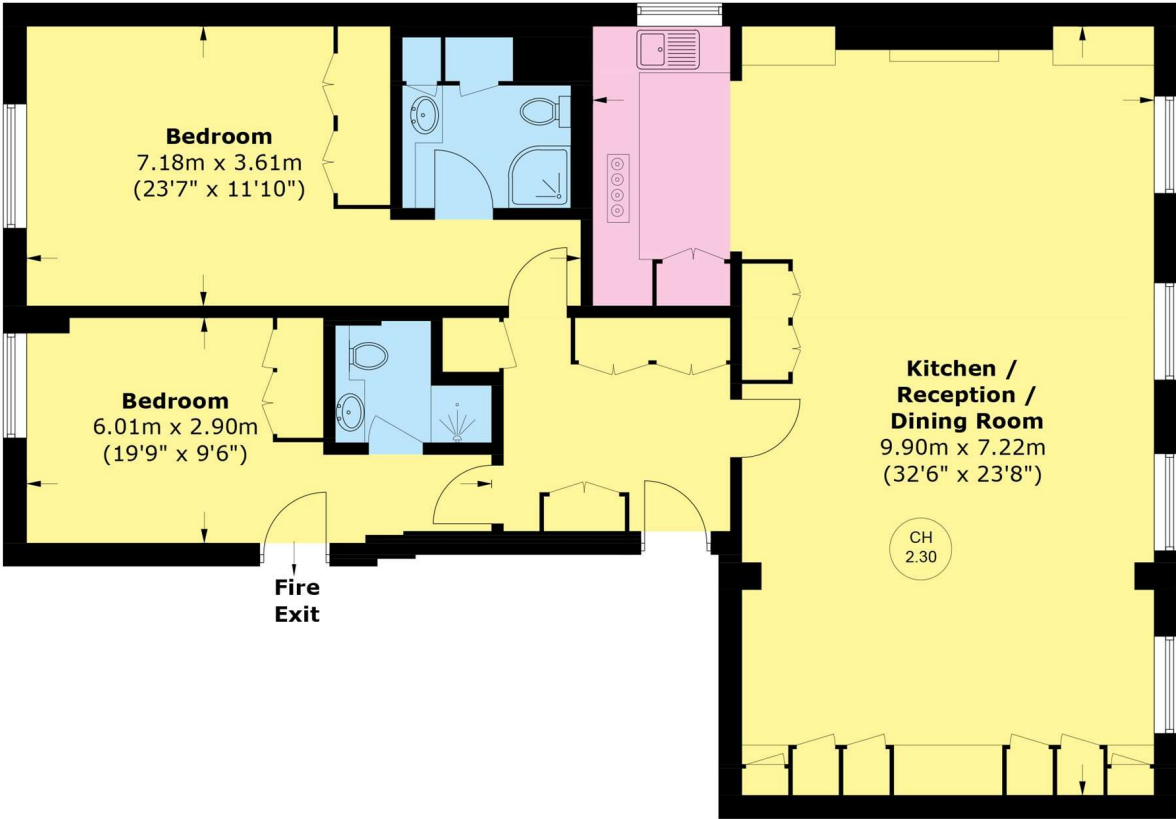
24hr Porter / Security

Air Conditioning

Wooden Flooring



Grosvenor Square,
London, W1K



Second Floor

Total area (approx.): 113.2 sq. m (1,218.4 sq. ft)



Wetherell
102 Mount Street
London
W1K 2TH
Lettings
020 7529 5588

Energy Rating: B. We aim to make our particulars both accurate and reliable. However they are not guaranteed; nor do they form part of an offer or contract. If you require clarification on any points then please contact us, especially if you're traveling some distance to view. Please note that appliances and heating systems have not been tested and therefore no warranties can be given as to their good working order.



dexters.co.uk