



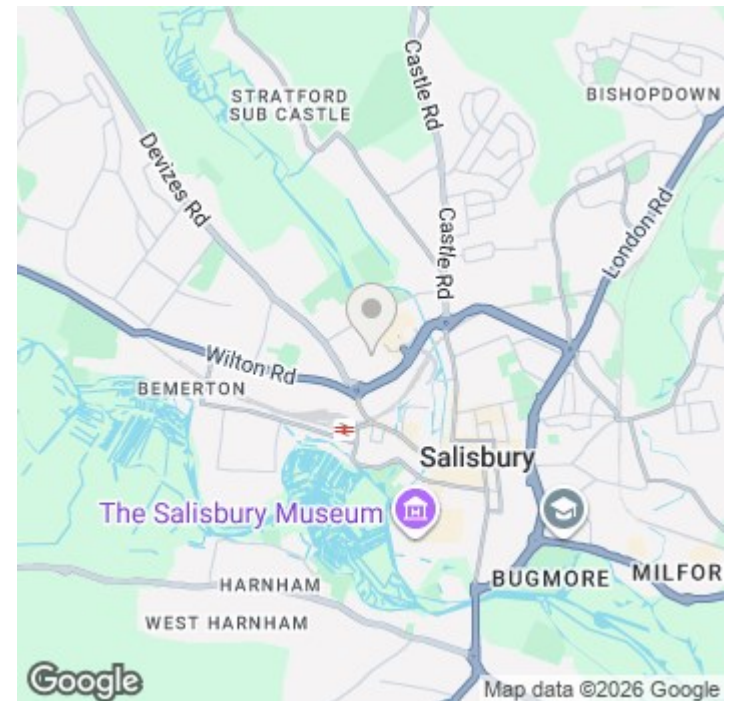
4 George Street, Salisbury, SP2 7BA

£1,300 PCM

## About The Property

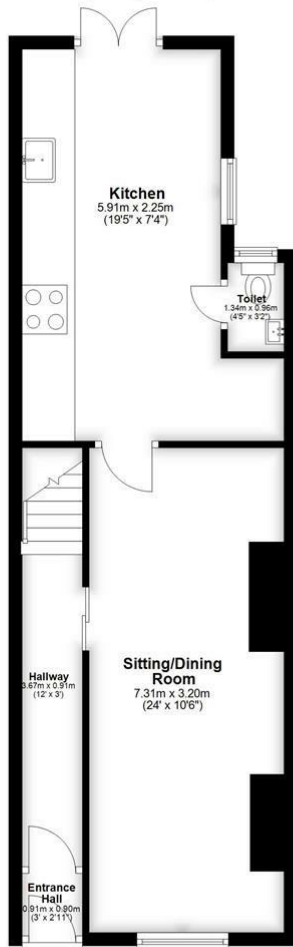
A fully redecorated three-bedroom home in Salisbury with open-plan living, modern kitchen, and a private garden

- Fully redecorated throughout
- Newly re carpeted
- Open-plan living/dining room
- Character wooden flooring
- Modern fitted kitchen
- Built-in appliances
- Downstairs cloakroom
- Private garden with patio
- Large storage shed
- Three bedroom/flexible use

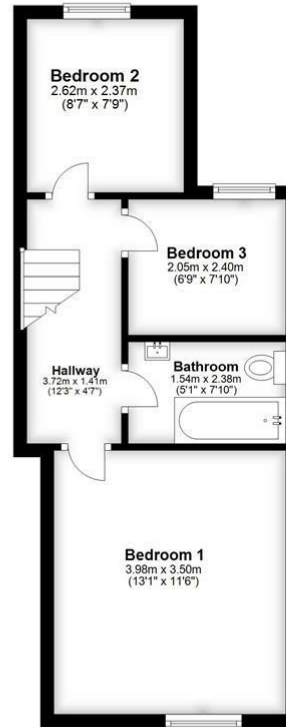




**Ground Floor**  
Approx. 45.9 sq. metres (493.5 sq. feet)  
(excluding Entrance Hall)



**First Floor**  
Approx. 35.2 sq. metres (378.4 sq. feet)



Total area: approx. 81.0 sq. metres (871.9 sq. feet)

## Further Information

Let available date: 11th May 2026  
NB: This date is provisional and will only be confirmed once referencing has been successfully completed.

Property type: House - Mid Terrace

Furnish type: Unfurnished

Deposit: £1,500

Local authority: Wiltshire

Council Tax: Band C

EPC: C(71)

### Energy Efficiency Rating

	Current	Potential
Very energy efficient - lower running costs		
(92 plus) <b>A</b>		
(81-91) <b>B</b>		
(69-80) <b>C</b>	71	77
(55-68) <b>D</b>		
(39-54) <b>E</b>		
(21-38) <b>F</b>		
(1-20) <b>G</b>		
Not energy efficient - higher running costs		
<b>England &amp; Wales</b>	EU Directive 2002/91/EC	