

LEASEHOLD



Flat - Purpose Built (EPC Rating: C)

**47 LORENZO HOUSE MEDICI CLOSE,
ILFORD, IG3 8FF**
Offers over

£250,000

Green Lane Residential

Your personal estate agents with over 50 years experience



2



1



1



C

2 Bedroom Flat - Purpose Built located in Ilford

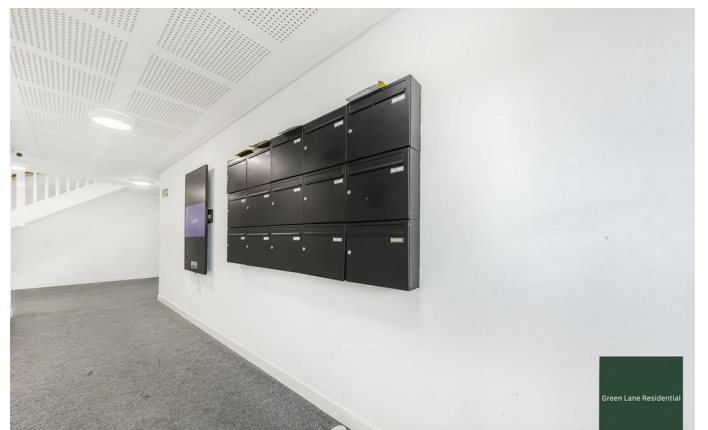
Acting as the seller's sole agents, Green Lane Residential are delighted to offer for sale this well-presented two-bedroom apartment, situated within a modern residential development just off Barley Lane in Goodmayes. The property presents an excellent opportunity for both first-time buyers and investors alike.

Arranged over approximately 566 sq ft, the accommodation comprises a bright and spacious reception area, a well-appointed kitchen, two comfortable bedrooms, and a contemporary family bathroom. The layout has been thoughtfully designed to maximise space and natural light throughout.

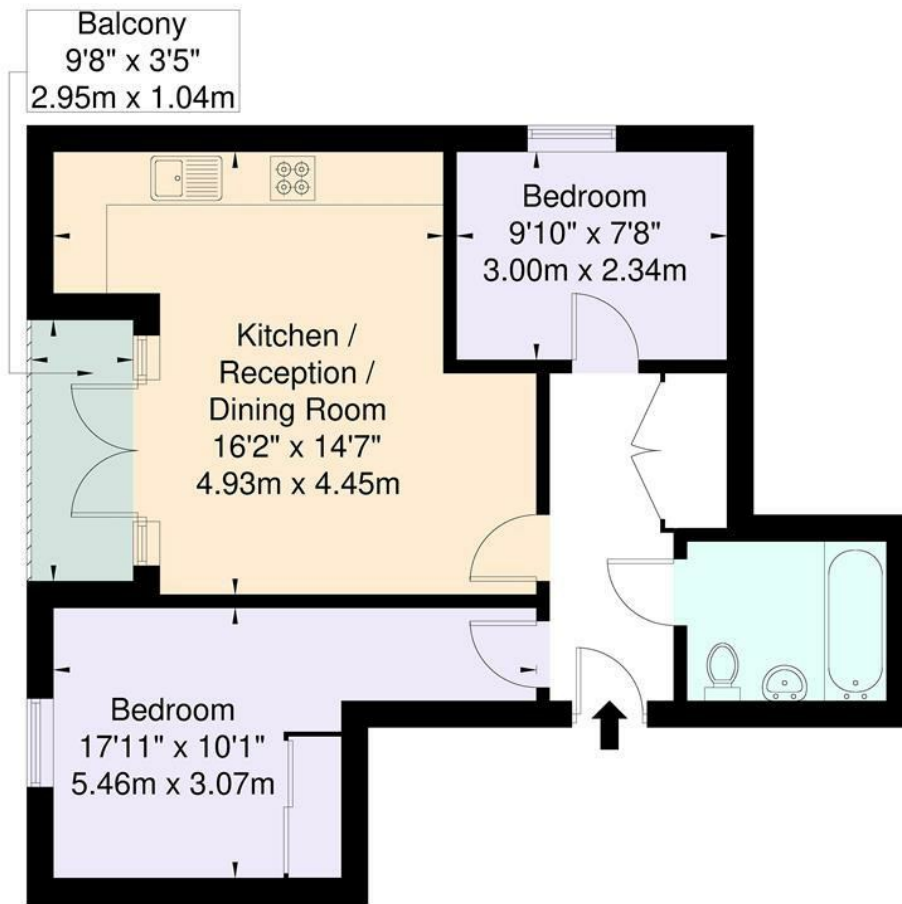
A standout feature of the property is its private balcony, providing uninterrupted views over the open green spaces of Goodmayes Hospital Sports Grounds, offering a rare sense of openness and tranquility within an urban setting.

Further benefits include an allocated parking space, approximately 106 years remaining on the lease, and vacant possession, allowing for a smooth and immediate purchase





Lorenzo House, Medici Close, IG3 8FF
 Approximate Gross Internal Area = 52.6 sq m / 566 sq ft



Second Floor

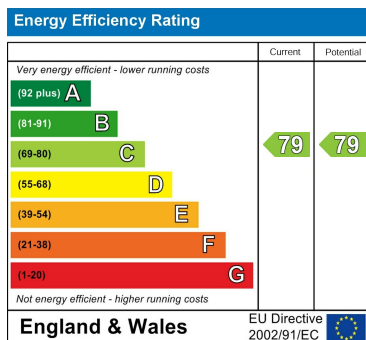
For Illustration Purposes Only - Not To Scale

This floor plan should be used as a general outline for guidance only and does not constitute in whole or in part an offer or contract. Any intending purchaser or lessee should satisfy themselves by inspection, enquiries and full survey as to the correctness of each statement. Any areas, measurements or distances quoted are approximate and should not be used to value a property or be the basis of any sale or let.

Council Tax Band

C

Energy Performance Graph



Call us on

02081293838

admin@greenlaneresidential.co.uk

greenlaneresidential.co.uk

Agents Note: Whilst every care has been taken to prepare these particulars, they are for guidance purposes only. All measurements are approximate and are for general guidance purposes only and whilst every care has been taken to ensure their accuracy, they should not be relied upon and potential buyers are advised to recheck the measurements.

Green Lane Residential

Your personal estate agents with over 50 years experience