



39 Hill Street, Hill Street,
Mayfair, W1J

£1,710 Per Week,

NAPIER WATT

T: 0207 935 0011
E: enquiries@napierwatt.co.uk
W: napierwatt.co.uk

35 Berkeley Square, Mayfair, London, W1J 5BF







Description

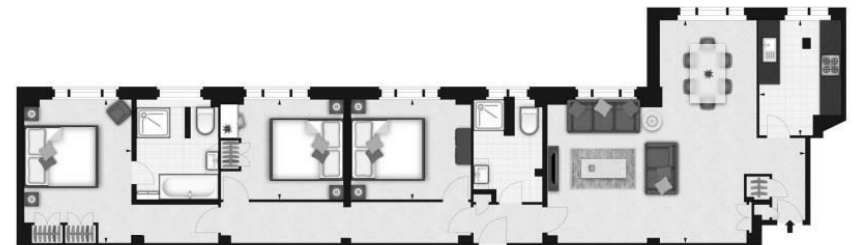
This BRAND NEW Interior Designed apartment is set over 1203 sq ft. and offers, three spacious double bedrooms, two modern fitted bathrooms, spacious reception room, and a unique kitchen with further benefits of storage space. Hill Street, benefits from spacious living accommodation, lift service, on-site building manager, and is nestled conveniently between two of London`s parks Hyde Park and Green Park. The transport links include underground stations which are Green Park Station and Bond Street station, Marble Arch Station all within a short stroll away.

Key Features

- LIFTS
- 24 HOUR CONCIERGE

Terms

Fees & Charges: Tenancies exceeding £100,000 Per annum £480 inc VAT, Tenancies where a company is a tenant £480 Inc VAT.



Approx. Gross Internal Area* 1203 sq ft - 111.76 m ² <small>*As determined by EICB - Order of Measuring Practice</small>		Property Details: Hill Street Mayfair W1J 5LZ	
		SCALE 1:100 @ A4 Plans Drawn: 03.08.2016	

IMPORTANT: We would inform prospective purchasers that these sales particulars have been prepared as a general guide only. A detailed survey has not been carried out, nor the services, appliances and fittings tested. Room sizes should not be relied upon for furnishing purposes and are approximate. If floor plans are included, they are for guidance only and illustration purposes only and may not be to scale. If there are any important matters likely to affect your decision to buy, please contact us before viewing the property.