

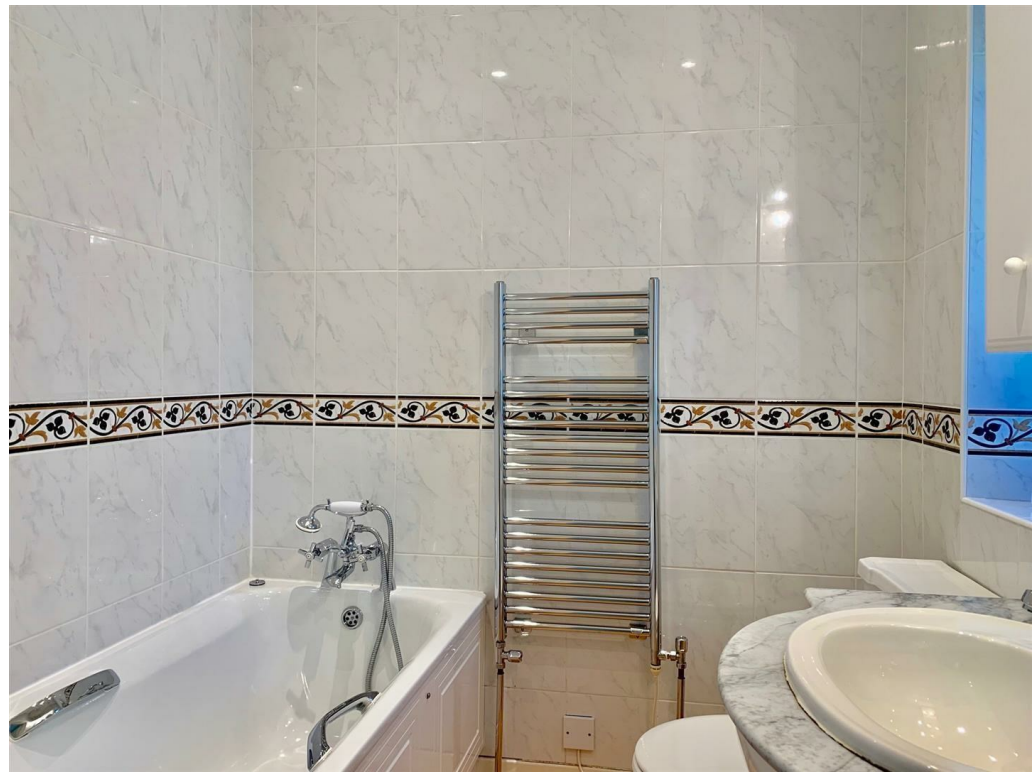


College Road, SE21 | £625,000

02087028111

dulwichvillage@pedderproperty.com

pedder
We live local



In General

- Attractive three bedroom, two reception split-level maisonette
- Particularly spacious - 1122 sq ft
- Three bedrooms
- Two bathrooms (one en-suite)
- 20' x 11' double reception room
- Further reception room
- Fitted kitchen
- Two garages en-bloc
- Attractive communal gardens
- Offered with no onward chain

In Detail

An attractive end of terrace maisonette for sale situated in this popular residential development running off College Road in Dulwich.

This split-level property being an end of terrace has one of the larger footprints within the development and with a gross internal area of 1122 sq ft the property offers particularly spacious accommodation comprising of three bedrooms, one with an en-suite bathroom, separate shower room, large 20' x 11' double reception room, further reception room and fitted kitchen. There are two single garages en-bloc and further on road parking. In addition there are delightful communal gardens to the rear of the development.

Stonehills Court is well located just a short distance from Dulwich Village with its charming range of independent boutiques, cafes and restaurants. Beautiful green spaces include Dulwich Woods on the doorstep, and nearby Dulwich Park, Belair Park and Crystal Palace Park. Excellent transport links nearby include Sydenham Hill (entrance approximately 300 yards) with services into London Victoria and Blackfriars, North Dulwich with services to London Bridge and Gipsy Hill with services to London Bridge and Victoria.

The property is offered with no onward chain.

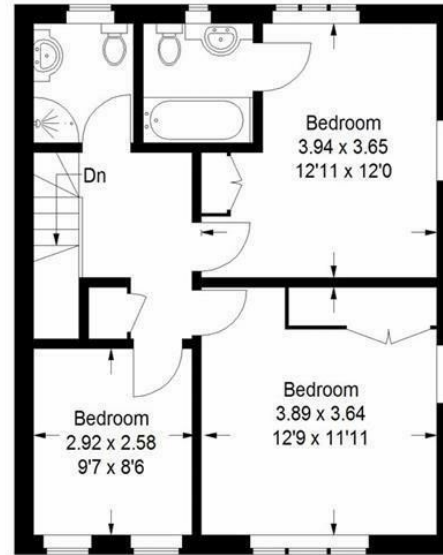
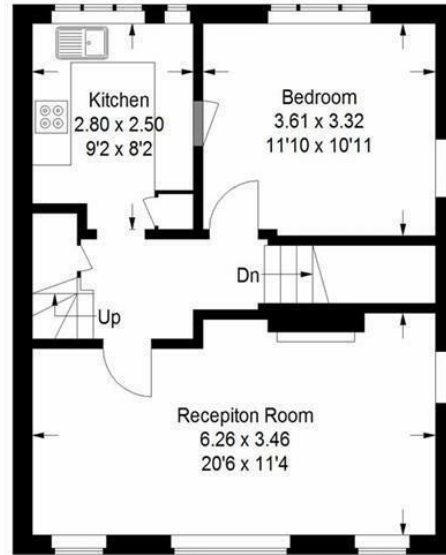
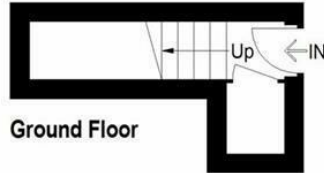
EPC: D | Council Tax Band: E | Lease: 170 years remaining | SC: £281 per quarter plus reserve fund - £552 per quarter | GR: Nil | BI: £807 pa



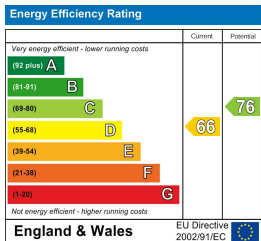
Floorplan

Stonehills Court, SE21

Approximate Gross Internal Area
 Ground Floor = 4.8 sq m / 52 sq ft
 First Floor = 49.7 sq m / 535 sq ft
 Second Floor = 49.7 sq m / 535 sq ft
 Total = 104.2 sq m / 1122 sq ft



Copyright www.pedderproperty.com © 2022
 These plans are for representation purposes only as defined by RICS - Code of Measuring Practice. Not drawn to Scale. Windows and door openings are approximate. Please check all dimensions, shapes and compass bearings before making any decisions reliant upon them.



Pedder Property Ltd trading as Pedder for themselves and for the vendor/landlord of this property whose agents they are, give notice that (1) these particulars do not constitute any part of an offer or contract, (2) all statements contained within these particulars are made without responsibility on the part of Pedder or the vendor/landlord, (3) whilst made in good faith, none of the statements contained within these particulars are to be relied upon as a statement of representation or fact, (4) any intending purchaser/tenant must satisfy him/herself by inspection or otherwise as to the correctness of each of the statements contained within these particulars, (5) the vendor/landlord does not make or give either Pedder or any person in their employment any authority to make or give representation or warranty whatsoever in relation to this property.