



**Connells**

Hawksford Crescent  
Bushbury Wolverhampton

# Hawksford Crescent Bushbury Wolverhampton WV10 9SN

for sale offers over  
**£210,000**



## Property Description

A THREE BEDROOM SEMI DETACHED HOME WITH NO UPWARD CHAIN - CORNER PLOT & GARAGE TO SIDE

The property is an ideal first time purchase offers a generous driveway, garage to the side, lounge, kitchen diner, bathroom, three bedrooms & enclosed rear garden. Property is also an ideal first time purchase.

## The Location & Area

Offering fantastic commuting access to the Stafford Road which links to Wolverhampton City Centre University and also has fantastic commuting access to New Cross Hospital, Bentley Bridge shopping centres along with the M6 and M54 motorways.

## Entrance Hall

## Lounge

## Kitchen Diner

## First Floor Landing

## Bedroom One

## Bedroom Two

## Bedroom Three

## Outside Rear

## Garage To Side

## Driveway

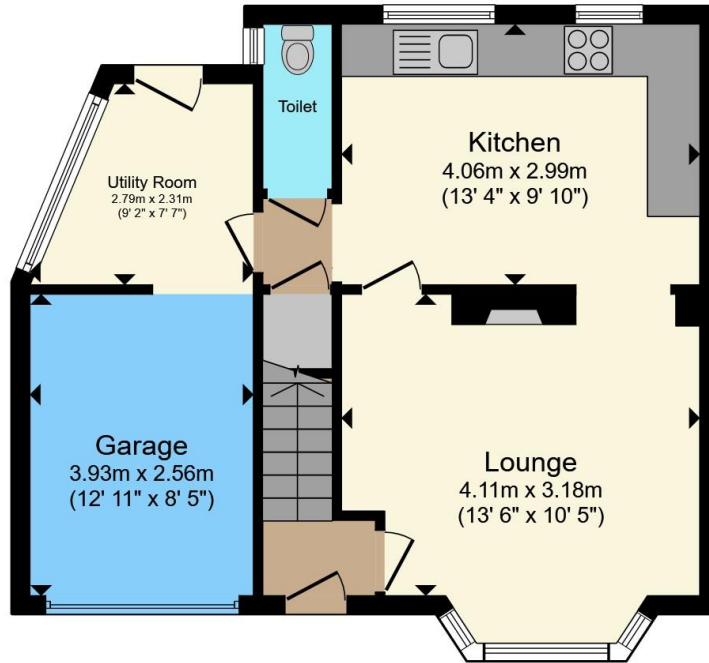
## Agents Note

Measurements and details to follow.

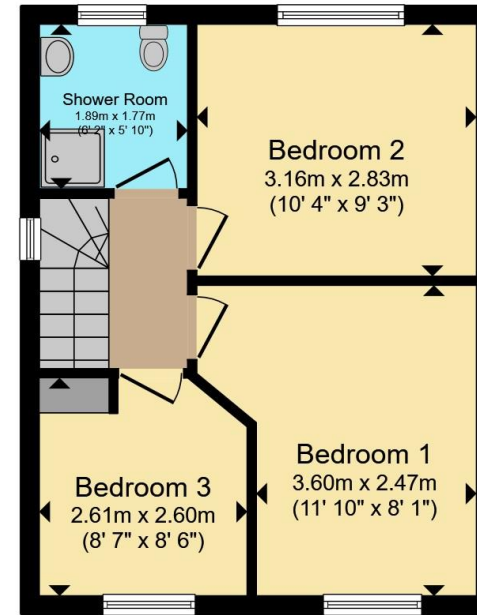








**Ground Floor**



**First Floor**

Total floor area 81.1 m<sup>2</sup> (872 sq.ft.) approx

This floor plan is for illustrative purposes only. It is not drawn to scale. Any measurements, floor areas (including any total floor area), openings and orientation are approximate. No details are guaranteed, they cannot be relied upon for any purpose and they do not form part of any agreement. No liability is taken for any error, omission or misstatement. A party must rely upon its own inspection(s). Powered by [www.propertybox.io](http://www.propertybox.io)



To view this property please contact Connells on

**T 01902 710 170**

**E [wolverhampton@connells.co.uk](mailto:wolverhampton@connells.co.uk)**

81-83 Darlington Street  
WOLVERHAMPTON WV1 4EX

EPC Rating: D Council Tax  
Band: A

Tenure: Freehold

**view this property online [connells.co.uk/Property/WVH335301](http://connells.co.uk/Property/WVH335301)**



1. MONEY LAUNDERING REGULATIONS Intending purchasers will be asked to produce identification documentation at a later stage and we would ask for your co-operation in order that there will be no delay in agreeing the sale. 2. These particulars do not constitute part or all of an offer or contract. 3. The measurements indicated are supplied for guidance only and as such must be considered incorrect. Potential buyers are advised to recheck measurements before committing to any expense. 4. We have not tested any apparatus, equipment, fixtures, fittings or services and it is in the buyers interest to check the working condition of any appliances.

Connells Residential is registered in England and Wales under company number 1489613, Registered Office is Cumbria House, 16-20 Hockliffe Street, Leighton Buzzard, Bedfordshire, LU7 1GN. VAT Registration Number is 500 2481 05.

**See all our properties at [www.connells.co.uk](http://www.connells.co.uk) | [www.rightmove.co.uk](http://www.rightmove.co.uk) | [www.zoopla.co.uk](http://www.zoopla.co.uk)**

Property Ref: WVH335301 - 0006